

2080 Bowman Park
Macon, GA 31210
Bibb County

\$269,000
NORTH MACON COMMERCIAL LOT



Last available lot in Bowman Park!

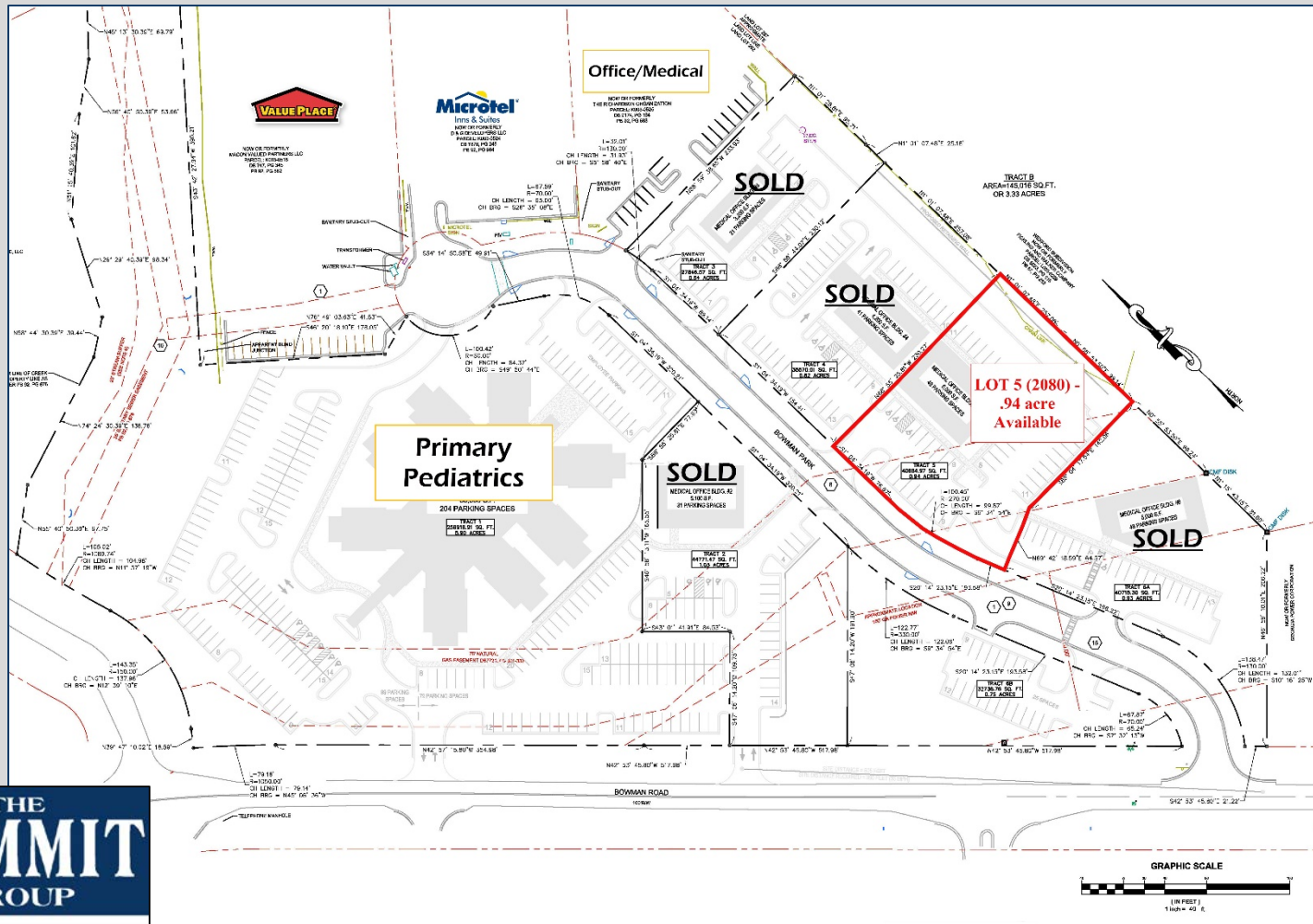
- .94 acre
- Level topography
- Zoned PDE (Planned Development)
- Public water and sewer available
- Master detention provided
- Architectural control handled by developer (ask Agent for details)
- Located off Bass Rd approximately 1 mile from I-75 (Exit 172), and less than 1 mile from the intersection of Bowman Rd and Wesleyan Dr



4124 Arkwright Road, Suite 1, Macon, GA 31210 | (478) 750-7507 | Fax (478) 750-9002 | www.thesummitgroupmacon.com

For additional information contact: **KING KEMPER, CCIM** | Cell (478) 957-1920 | kkemper@thesummitgroupmacon.com

2080 Bowman Park
 Macon, GA 31210
 Bibb County



The information contained herein has been compiled from various sources, both private and public. It is accurate and complete only to the extent to which The Summit Group has been able to ascertain from third party sources. As such, no warranty or guarantee is given or implied with regard to the accuracy or completeness of any information contained herein. Any interested party shall be required to conduct its own due diligence and investigations to verify, review, audit, or otherwise insure the information contained herein.