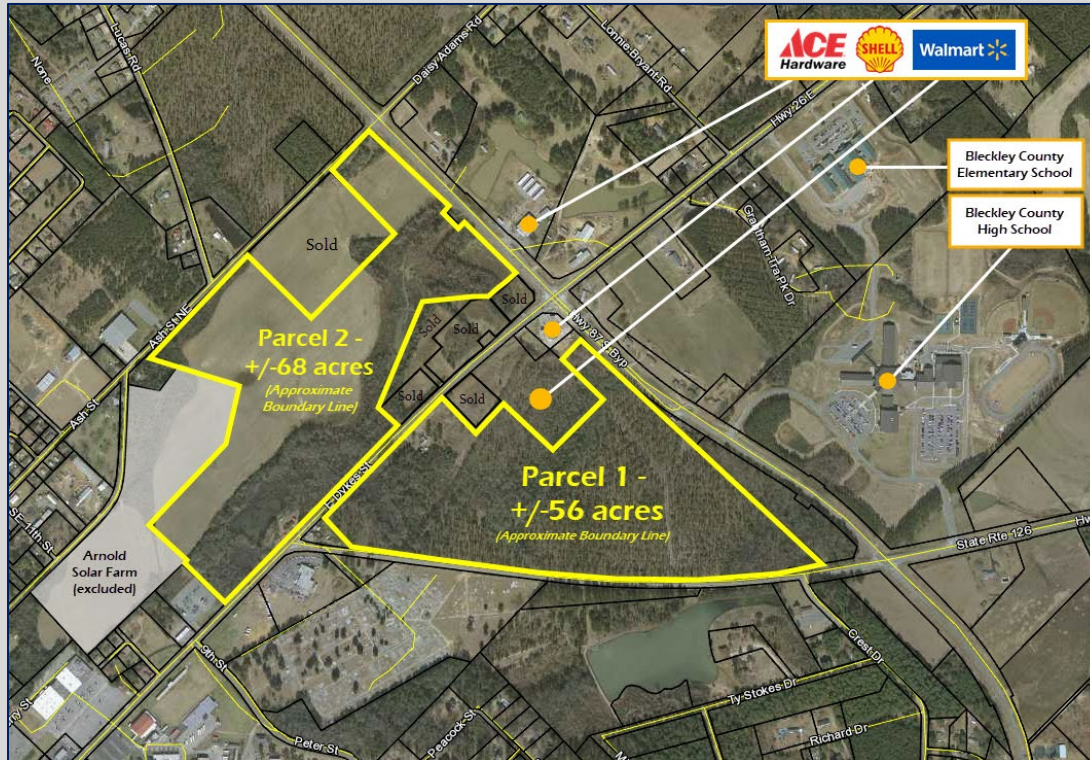


Highway 87 Bypass @
Highway 26 (East Dykes Street)
Cochran, GA 31014
Bleckley County

CALL FOR PRICING



- ±124 acres divided into two (2) parcels
 - PARCEL 1 — ±56 acres adjacent to Wal-Mart. Frontage on Highway 87 Bypass, Highway 26 (East Dykes Street) and SR 126.
 - PARCEL 2 — 68 acres across from Wal-Mart. Frontage on Highway 87 Bypass, Highway 26 (East Dykes Street) and Ash Street.
- Flat topography
- Zoned R-5
- City water and sewer
- Zoned for commercial use



4124 Arkwright Road, Suite 1, Macon, GA 31210 | (478) 750-7507 | Fax (478) 750-9002 | www.thesummitgroupmacon.com

For additional information contact: **REX YODER** | Cell (478) 394-5777 | ryoder@thesummitgroupmacon.com