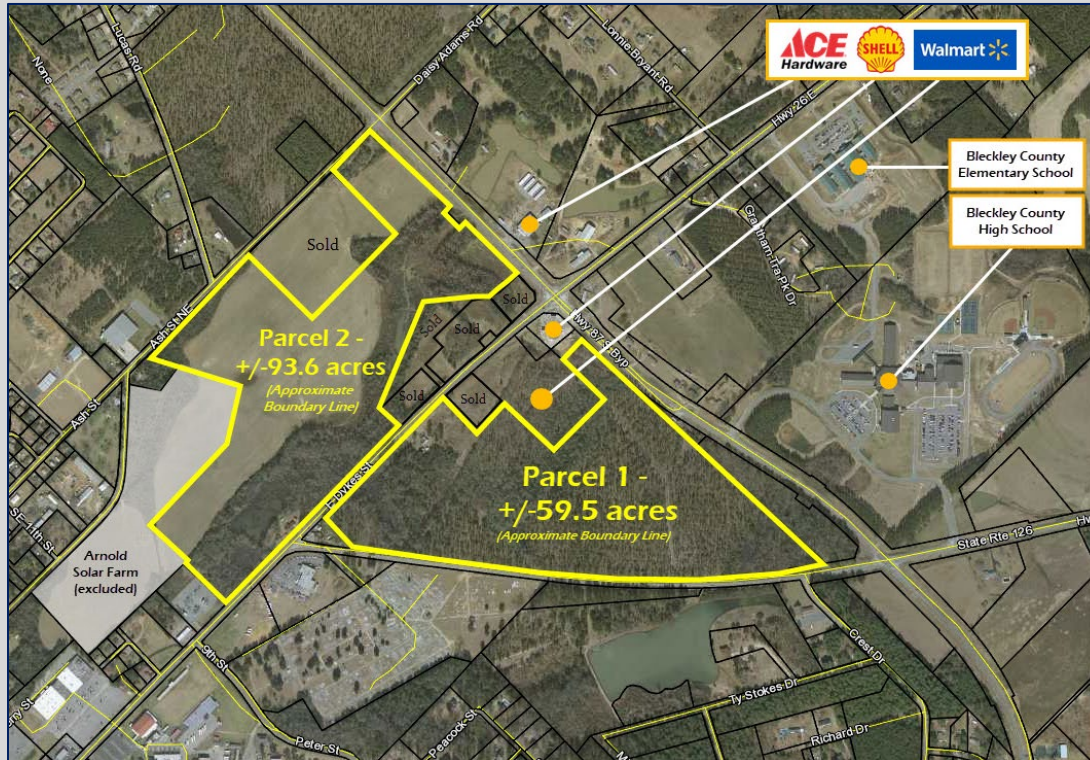


Highway 87 Bypass @
Highway 26 (East Dykes Street)
Cochran, GA 31014
Bleckley County

CALL FOR PRICING



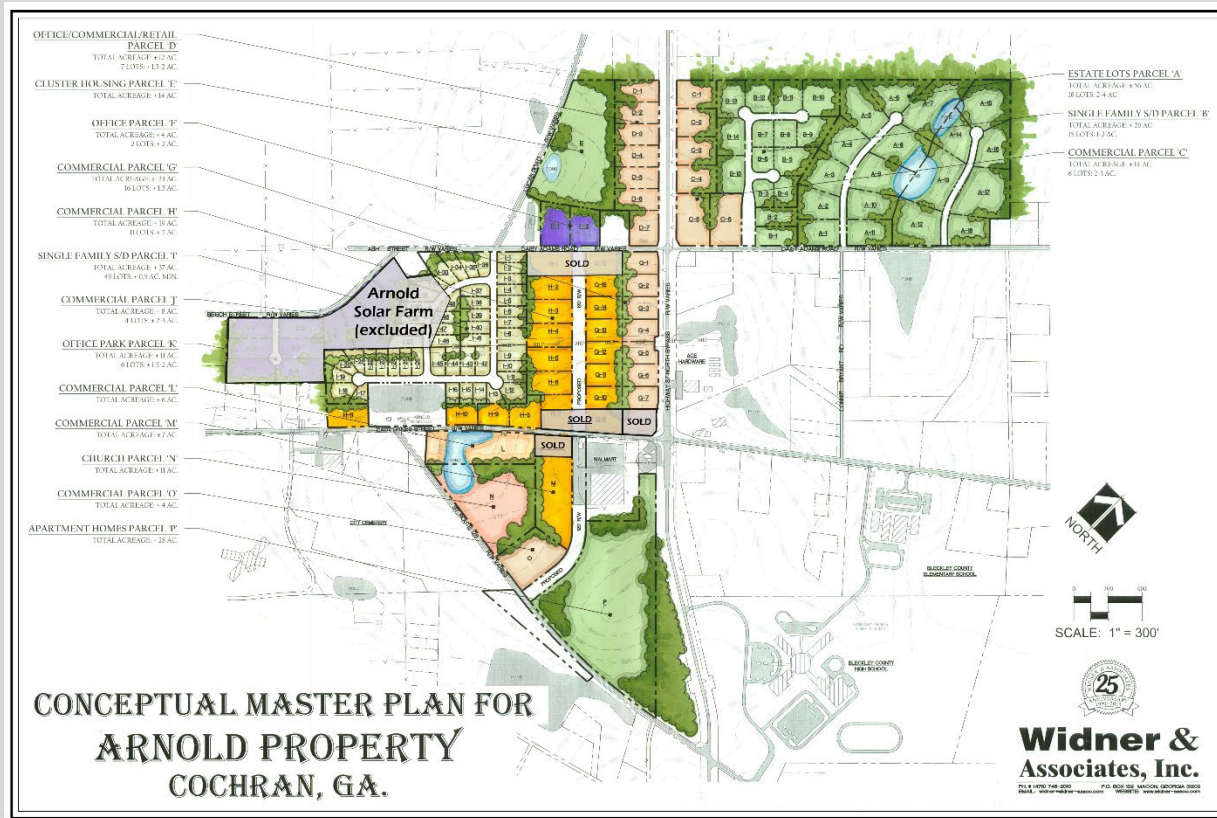
- ±153 acres divided into two (2) parcels
 - PARCEL 1 — ±59.5 acres adjacent to Wal-Mart. Frontage on Highway 87 Bypass, Highway 26 (East Dykes Street) and SR 126.
 - PARCEL 2 — ±93.6 acres across from Wal-Mart. Frontage on Highway 87 Bypass, Highway 26 (East Dykes Street) and Ash Street.
- Flat topography
- City water and sewer
- Zoned for commercial use



4124 Arkwright Road, Suite 1, Macon, GA 31210 | (478) 750-7507 | Fax (478) 750-9002 | www.thesummitgroupmacon.com

For additional information contact: **REX YODER** | Cell (478) 394-5777 | ryoder@thesummitgroupmacon.com

Highway 87 Bypass @
 Highway 26 (East Dykes Street)
 Cochran, GA 31014
 Bleckley County



4124 Arkwright Road, Suite 1, Macon, GA 31210 | (478) 750-7507 | Fax (478) 750-9002 | www.thesummitgroupmacon.com

For additional information contact: **REX YODER** | Cell (478) 394-5777 | ryoder@thesummitgroupmacon.com

The information contained herein has been compiled from various sources, both private and public. It is accurate and complete only to the extent to which The Summit Group has been able to ascertain from third party sources. As such, no warranty or guarantee is given or implied with regard to the accuracy or completeness of any information contained herein. Any interested party shall be required to conduct its own due diligence and investigations to verify, review, audit, or otherwise insure the information contained herein.