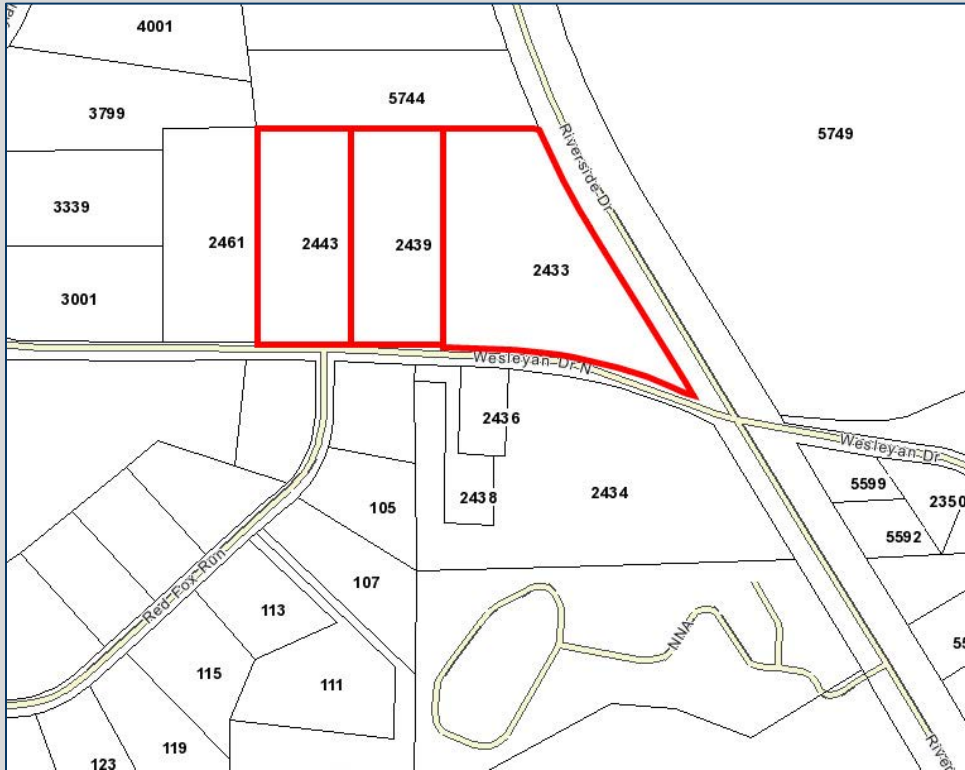


2433-2439-2443 N Wesleyan Drive  
Macon, GA 31210  
Bibb County

**PRICE REDUCED**  
BIRCHWOOD SUBDIVISION LOTS



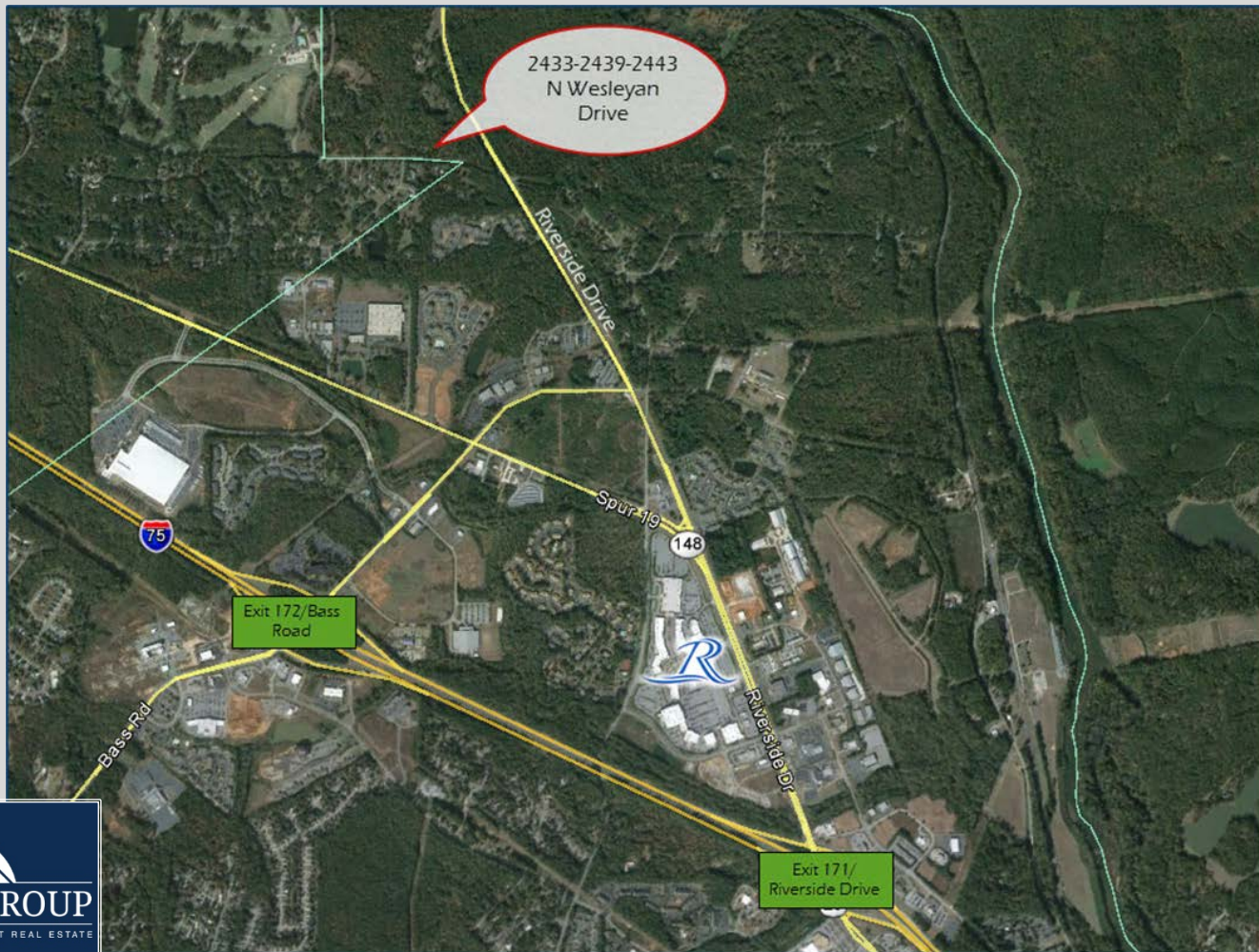
- Three (3) lots totaling ±19.67 acres
  - 2433 N WESLEYAN DR – 9.67 acres  
(Asking Price: \$160,000)
  - 2439 N WESLEYAN DR – 5 acres  
(Asking Price: \$95,000)
  - 2443 N WESLEYAN DR – 5 acres  
(Asking Price: \$95,000)
- Lots may be sold separately
- Protective Covenants in place
- City water available to site
- Zoned Single-Family Residential
- Convenient to Interstate 75 (Exits 171 & 172), Bass Road, Riverside Drive and The Shoppes at River Crossing



4124 Arkwright Road, Suite 1, Macon, GA 31210 | (478) 750-7507 | Fax (478) 750-9002 | [www.thesummitgroupmacon.com](http://www.thesummitgroupmacon.com)

For additional information contact: **REX YODER** | Cell (478) 394-5777 | [ryoder@thesummitgroupmacon.com](mailto:ryoder@thesummitgroupmacon.com)

2433-2439-2443 N Wesleyan Drive  
Macon, GA 31210  
Bibb County



The information contained herein has been compiled from various sources, both private and public. It is accurate and complete only to the extent to which The Summit Group has been able to ascertain from third party sources. As such, no warranty or guarantee is given or implied with regard to the accuracy or completeness of any information contained herein. Any interested party shall be required to conduct its own due diligence and investigations to verify, review, audit, or otherwise insure the information contained herein.