

Highway 247 Connector @ John E. Sullivan Rd
Byron, GA 31008
Peach County

\$164,000/ACRE



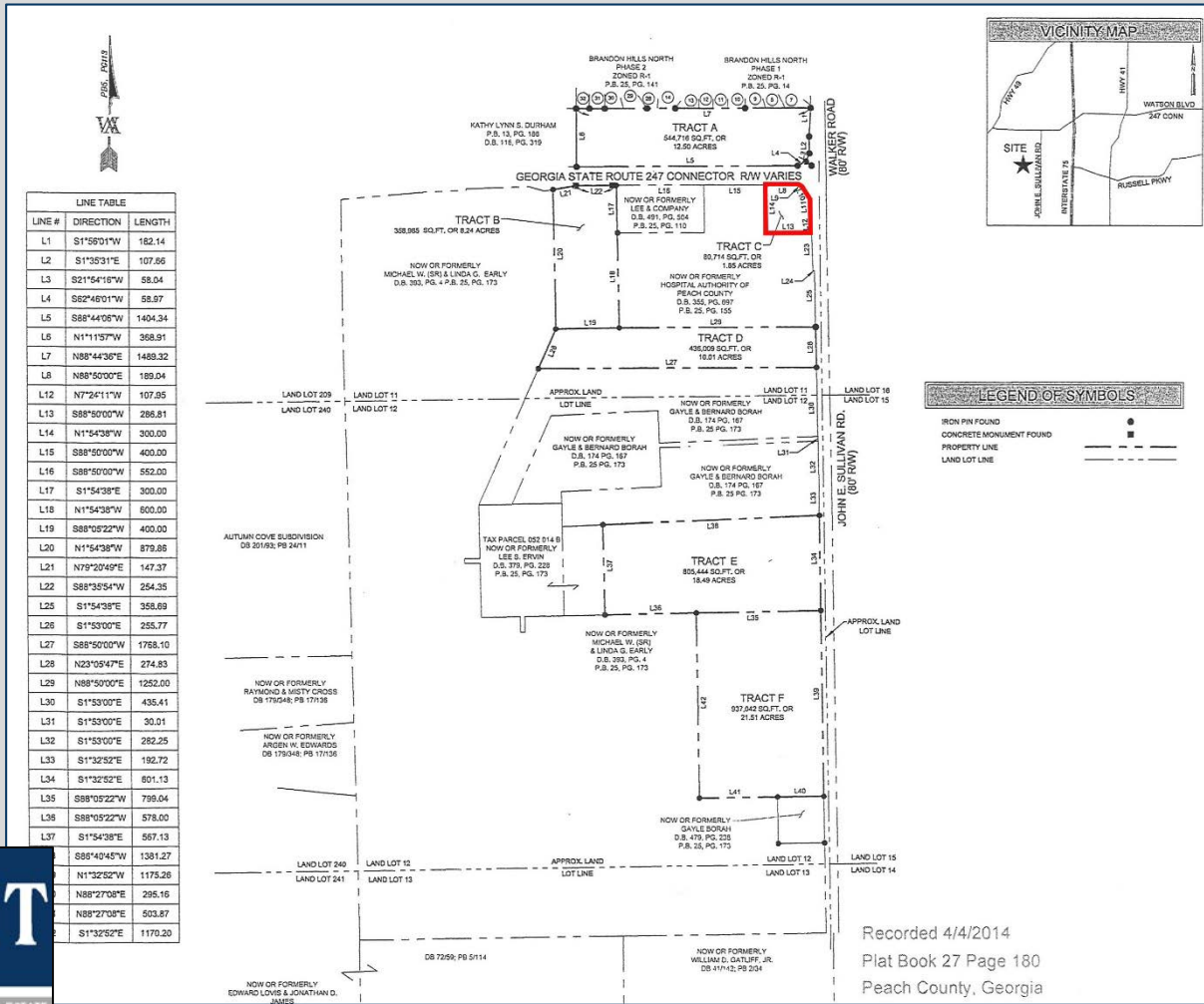
- ±1.85 acres
- Corner lot with approximately 185 frontage feet on Highway 247 Connector and approximately 220 frontage feet on John E. Sullivan Road
- Zoned C-3/PUD
- Great location less than 1.5 miles west of Interstate 75 (Exit 146) and adjacent to the Medical Center of Peach County, Navicent Health
- Additional acreage available in the immediate area (call Agent for more information)



4124 Arkwright Road, Suite 1, Macon, GA 31210 | (478) 750-7507 | Fax (478) 750-9002 | www.thesummitgroupmacon.com

For additional information contact: **KEVIN HARKINS** | Cell (478) 338-0623 | kharkins@thesummitgroupmacon.com

Highway 247 Connector @ Walker Road Byron, GA 31008 Peach County



The information contained herein has been compiled from various sources, both private and public. It is accurate and complete only to the extent to which The Summit Group has been able to ascertain from third party sources. As such, no warranty or guarantee is given or implied with regard to the accuracy or completeness of any information contained herein. Any interested party shall be required to conduct its own due diligence and investigations to verify, review, audit, or otherwise insure the information contained herein.