

Highway 247 Connector @ Walker Road
Byron, GA 31008
Peach County

PRICE REDUCED
~~\$79,000/ACRE~~ \$69,000/ACRE



- ±10.5 acres
- Approximately 1,200 frontage feet on Highway 247 Connector
- Zoned C-3/PUD
- Great location less than 1.5 miles west of Interstate 75 (Exit 146) and across from the Medical Center of Peach County, Navicent Health
- Additional acreage available in the immediate area (call Agent for more information)



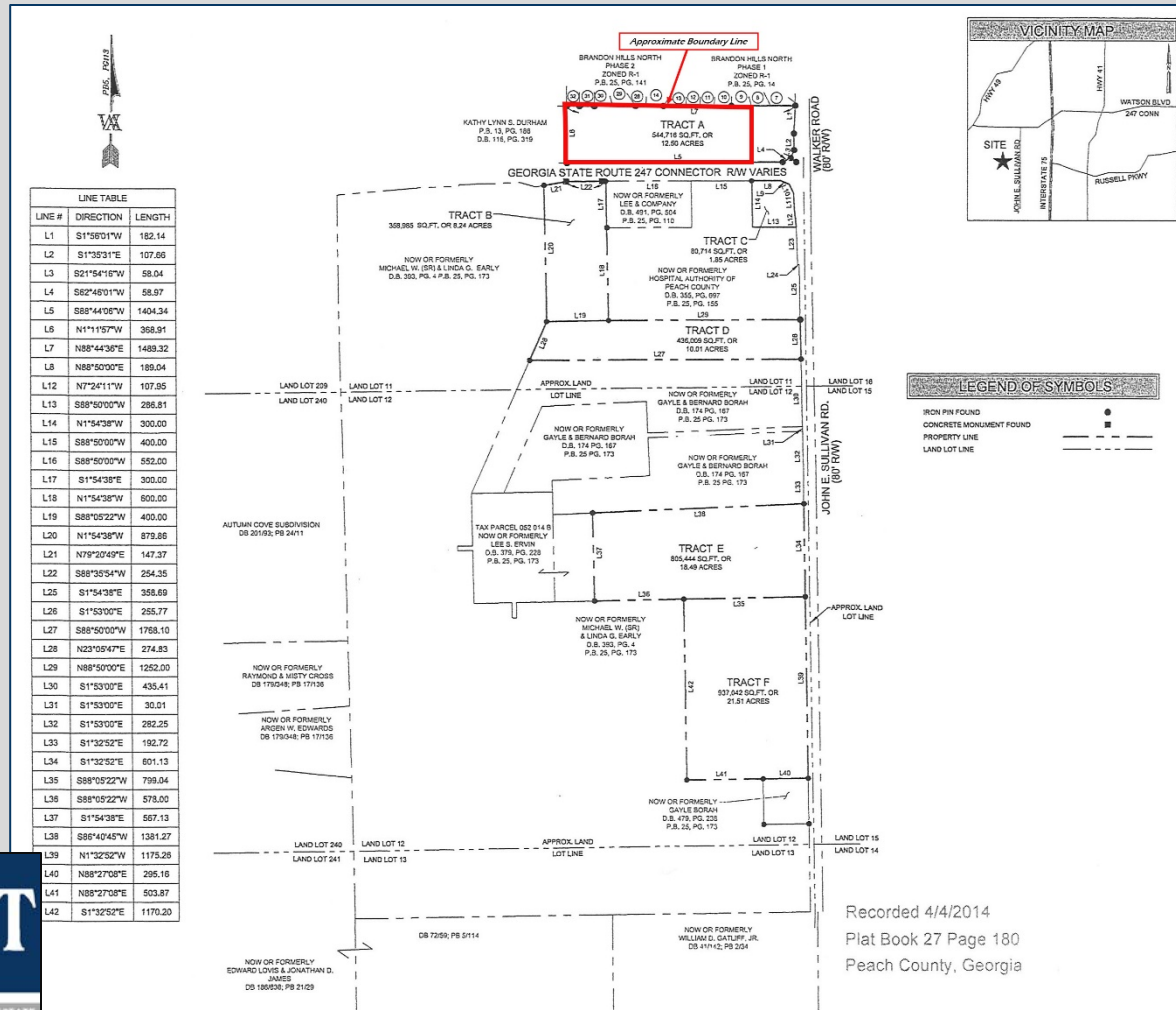
4124 Arkwright Road, Suite 1, Macon, GA 31210 | (478) 750-7507 | Fax (478) 750-9002 | www.thesummitgroupmacon.com

For additional information contact: **KEVIN HARKINS** | Cell (478) 338-0623 | kharkins@thesummitgroupmacon.com

Highway 247 Connector @ Walker Road

Byron, GA 31008

Peach County



Recorded 4/4/2014
 Plat Book 27 Page 180
 Peach County, Georgia

The information contained herein has been compiled from various sources, both private and public. It is accurate and complete only to the extent to which The Summit Group has been able to ascertain from third party sources. As such, no warranty or guarantee is given or implied with regard to the accuracy or completeness of any information contained herein. Any interested party shall be required to conduct its own due diligence and investigations to verify, review, audit, or otherwise insure the information contained herein.