

### LEGEND

- CURB AND GUTTER (C&G)
- FENCE
- HANDRAIL
- STORM DRAIN LINE
- SANITARY SEWER
- WATER LINE
- GAS LINE
- UNDERGROUND POWER LINE
- OVERHEAD POWER LINE
- COMMUNICATION
- TOPOGRAPHIC CONTOUR
- FUGHERY LINE
- CATCH BASIN (DWCS)
- DROP INLET (DI)
- JUNCTION BOX (JB)
- HEAD WALL (HW)
- CURB INLET (CI)
- FLARED END SECTION (FES)
- OUTLET CONTROL STRUCTURE
- YARD DRAIN INLET
- SS MANHOLE (MH)
- CLEAN OUT (CO)
- GREASE TRAP (GT)
- IRRIGATION CONTROL VALVE
- FIRE HYDRANT (FH)
- WATER VALVE (WV)
- WATER METER (WM)
- FIRE DEPT. CONNECTION (FDC)
- WATER VALVE MARKER
- TRANSFORMER BOX (TX)
- AIR CONDITIONER (AC)
- ELECTRIC METER (EM)
- ELECTRIC UTILITY
- LIGHT POLE (LP)
- POWER POLE WITH LIGHT
- POWER POLE (PP)
- UTILITY MANHOLE (UM)
- SPOTLIGHT
- GAS METER (GM)
- GAS VALVE (GV)
- TELEPHONE PEDESTAL
- COMMUNICATION BOX
- TRAFFIC SIGNAL
- BOLLARD (BO)
- MAIL BOX
- SIGN
- CROSSWALK SIGNAL
- SPOT ELEVATION
- CONCRETE AREA
- OVERHANG AREA
- RIP-RAP AREA
- BRICK AREA
- TREELINE

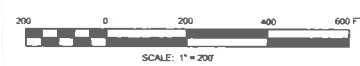
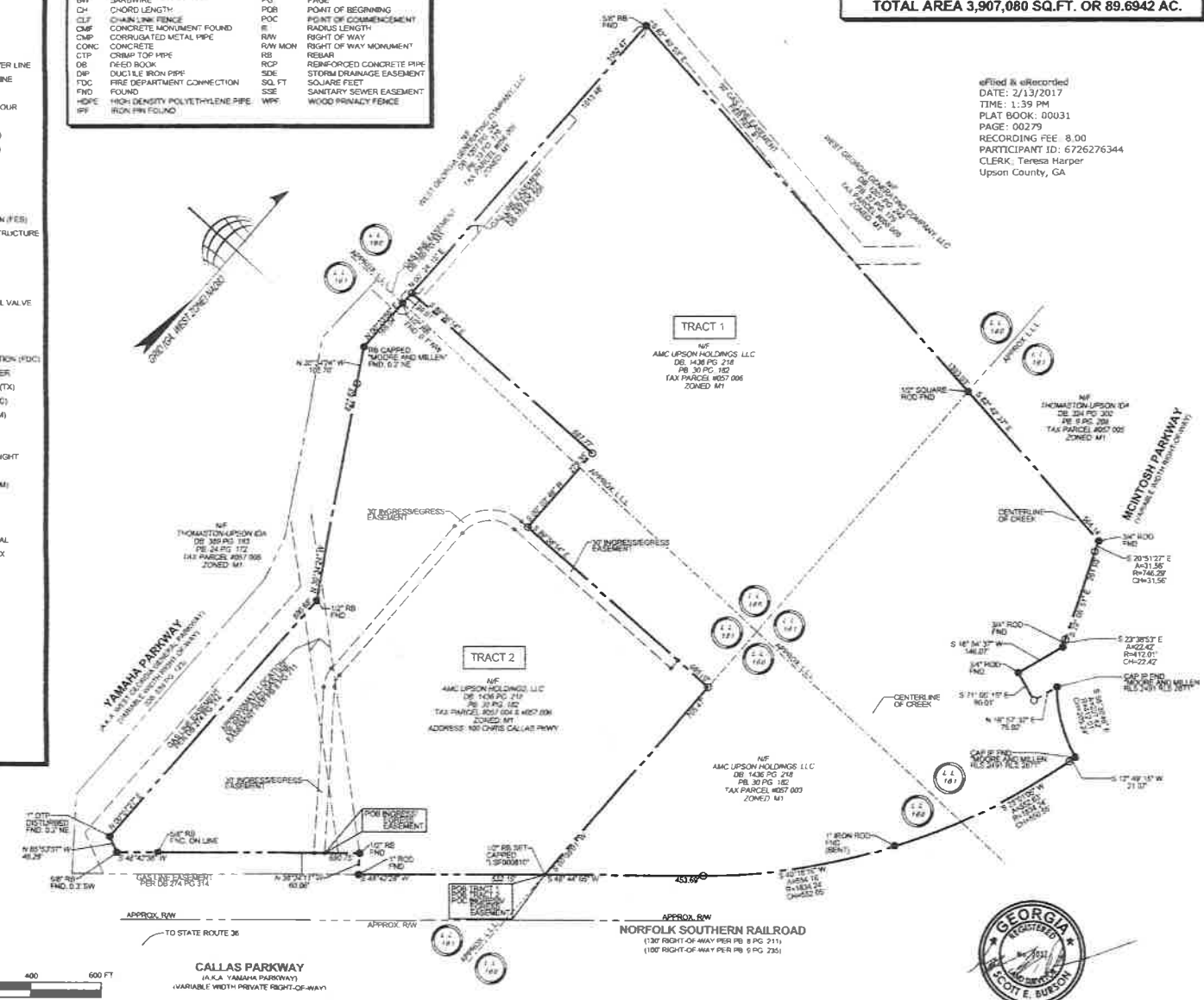
### ABBREVIATIONS

- |      |                                |         |                          |
|------|--------------------------------|---------|--------------------------|
| A    | ARC LENGTH                     | IPS     | IRON PIN SET (CAPPED)    |
| AC   | ACRE                           | NF      | NOW OR FORMERLY          |
| AE   | ACCESS EASEMENT                | OTF     | OPEN TOP PIPE            |
| BSL  | BUILDING SETBACK LINE          | PB      | PLAT BOOK                |
| BW   | BARWIRE                        | PG      | PAGE                     |
| CH   | CHORD LENGTH                   | POB     | POINT OF BEGINNING       |
| CLF  | CHAIN LINK FENCE               | POC     | POINT OF COMMENCEMENT    |
| CMF  | CONCRETE MONUMENT FOUND        | R       | RADIUS LENGTH            |
| CMP  | CORRUGATED METAL PIPE          | ROW     | RIGHT OF WAY             |
| CONC | CONCRETE                       | ROW MON | RIGHT OF WAY MONUMENT    |
| CTP  | CRIMP TOP PIPE                 | RS      | REBAR                    |
| DB   | FIELD BOOK                     | RCP     | REINFORCED CONCRETE PIPE |
| DIP  | DUCTILE IRON PIPE              | SD      | STORM DRAINAGE EASEMENT  |
| FDC  | FIRE DEPARTMENT CONNECTION     | SQ. FT  | SQUARE FEET              |
| FND  | FOUND                          | SOE     | SANITARY SEWER EASEMENT  |
| HDP  | HIGH DENSITY POLYETHYLENE PIPE | WPF     | WOOD PRIVACY FENCE       |
| IFP  | IRON PIN FOUND                 |         |                          |

### AREA TABLE

TRACT 1 2,527,342 SQ.FT. OR 58.0198 AC.  
 TRACT 2 1,379,738 SQ.FT. OR 31.6744 AC.  
**TOTAL AREA 3,907,080 SQ.FT. OR 89.6942 AC.**

edited & eScribbled  
 DATE: 2/13/2017  
 TIME: 1:39 PM  
 PLAT BOOK: 00031  
 PAGE: 00279  
 RECORDING FEE: 8.00  
 PARTICIPANT ID: 6726276344  
 CLERK: Teresa Harper  
 Upson County, GA



TerraMark  
 PROFESSIONAL SURVEYING & MAPPING, INC.  
 11000 Peachtree Dunwoody Rd., Suite 100  
 Atlanta, GA 30328  
 Phone: (770) 437-1817  
 Fax: (770) 437-1818  
 www.terra-mark.com  
 C. O. A. #158980010

Project No.	Client	Date
17-0001	AMC UPSON HOLDINGS, LLC	2/13/17
17-0002	AMC UPSON HOLDINGS, LLC	2/13/17
17-0003	AMC UPSON HOLDINGS, LLC	2/13/17
17-0004	AMC UPSON HOLDINGS, LLC	2/13/17
17-0005	AMC UPSON HOLDINGS, LLC	2/13/17
17-0006	AMC UPSON HOLDINGS, LLC	2/13/17
17-0007	AMC UPSON HOLDINGS, LLC	2/13/17
17-0008	AMC UPSON HOLDINGS, LLC	2/13/17
17-0009	AMC UPSON HOLDINGS, LLC	2/13/17
17-0010	AMC UPSON HOLDINGS, LLC	2/13/17

MINOR PLAT FOR APOLLO TECHNOLOGIES (AMC UPSON HOLDINGS, LLC PROPERTY) LOCATED IN LAND LOTS 160, 161, 180 & 181 10TH DISTRICT, CITY OF THOMASTON UPSON COUNTY, GEORGIA