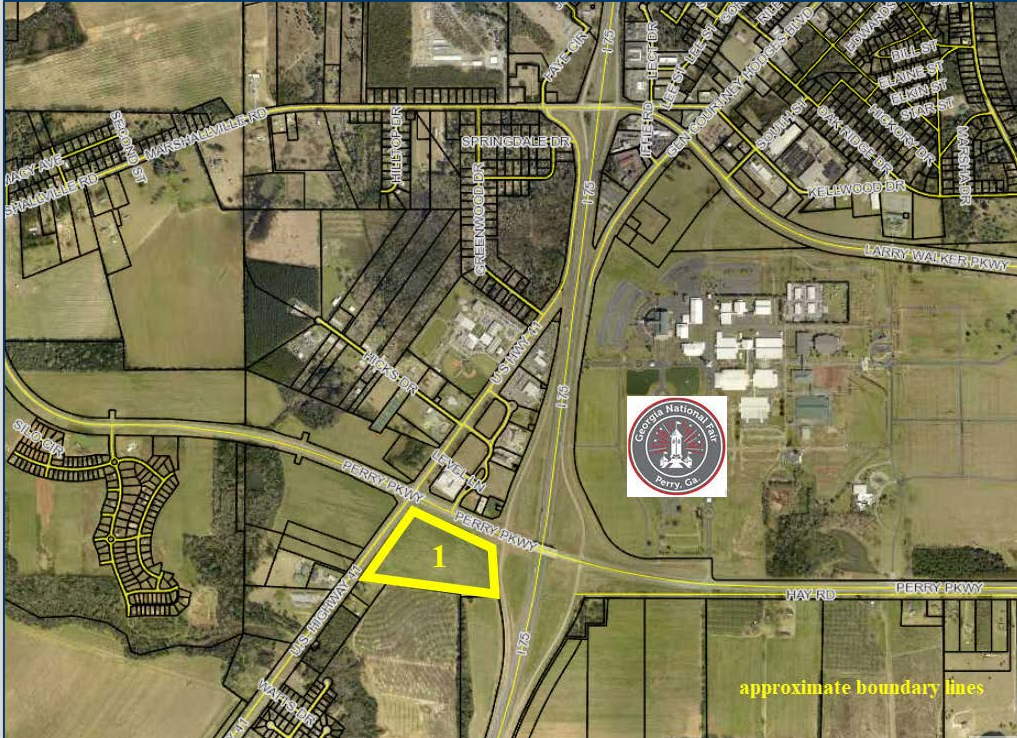


Perry Parkway and I-75, Tract 1
Perry, Georgia, 31069
Houston County

COMMERCIAL TRACT NEAR AG VILLAGE



- 26.36 acres
- Perry Parkway Frontage
- Zoned C-2 (commercial)
- All public utilities available to site
- Excellent location near Interstate 75 (Exit 134) and the intersection of Perry Parkway and Highway 41
- Property video available at: youtu.be/mkb4dt9Uxno

\$119,000/ACRE



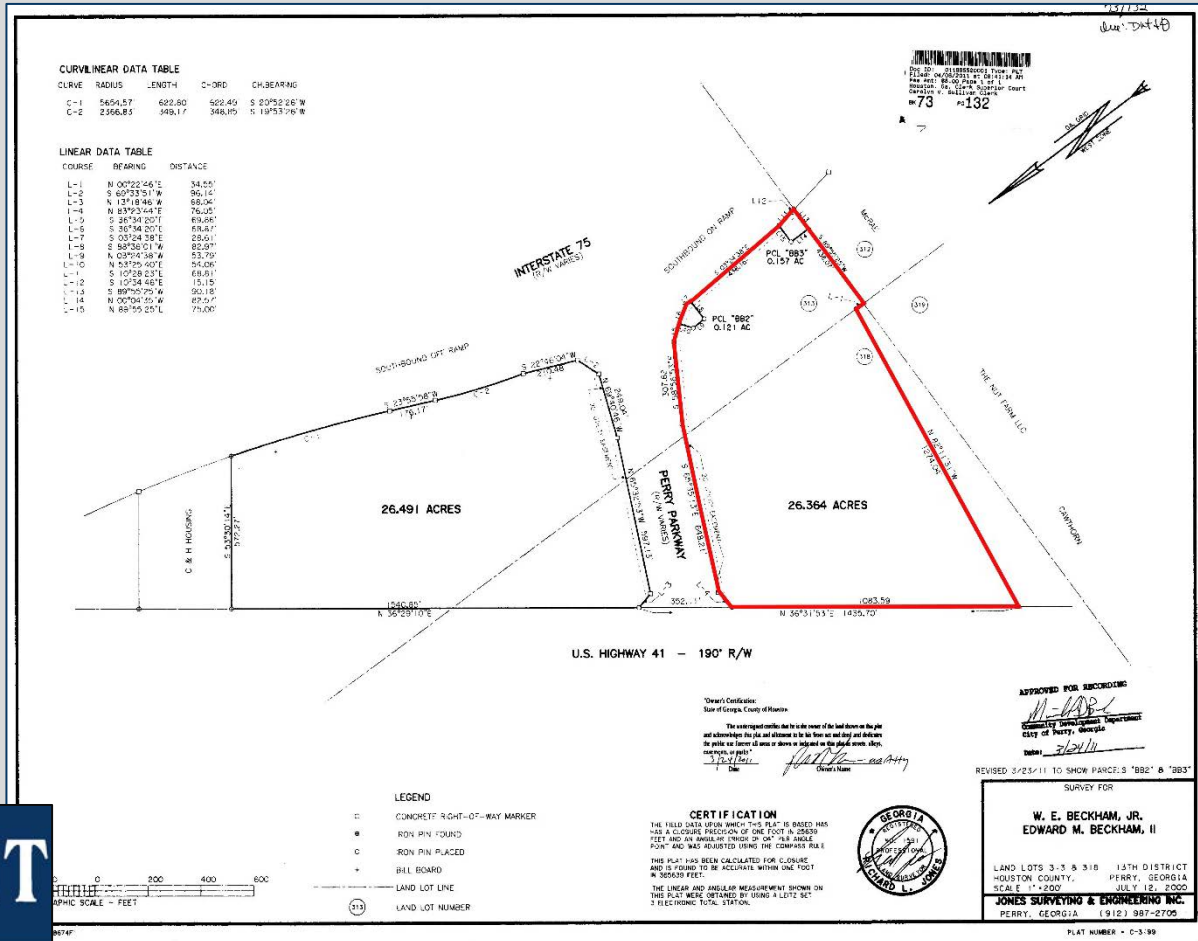
4124 Arkwright Road, Suite 1, Macon, GA 31210 | (478) 750-7507 | Fax (478) 750-9002 | www.thesummitgroupmacon.com

For additional information contact: **KING KEMPER, CCIM** | Cell (478) 957-1920 | kkemper@thesummitgroupmacon.com
~or~ **DEREK FOSTER** | Cell (478) 997-1024 | dfoster@thesummitgroupmacon.com

Perry Parkway and I-75, Tract 1

Perry, Georgia, 31069

Houston County



The information contained herein has been compiled from various sources, both private and public. It is accurate and complete only to the extent to which The Summit Group has been able to ascertain from third party sources. As such, no warranty or guarantee is given or implied with regard to the accuracy or completeness of any information contained herein. Any interested party shall be required to conduct its own due diligence and investigations to verify, review, audit, or otherwise insure the information contained herein.