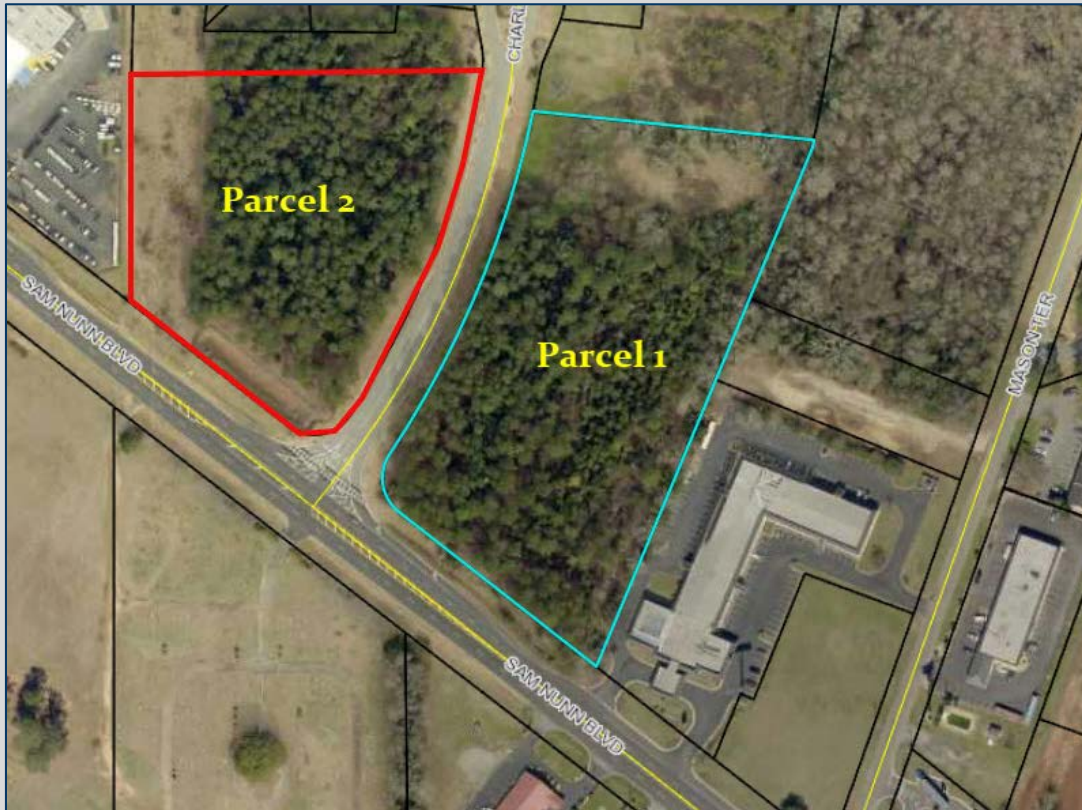


1513 Sam Nunn Boulevard
Perry, Georgia 31069
Houston County

CALL FOR PRICING COMMERCIAL ACREAGE



- 10± acres – Two parcels can be sold separately or combined
- PARCEL 1 – 5.75± acres with 380± frontage feet on Sam Nunn Boulevard
 - Zoned C-3 Commercial
 - City water and sewer
 - 2019 RE Taxes \$4135.30
- PARCEL 2 – 4.25± acres with 300± frontage feet on Sam Nunn Boulevard
 - Zoned C-3 Commercial
 - City water and sewer
 - 2019 RE Taxes \$2961.61
- Located at entrance to Walker Farm



4124 Arkwright Road, Suite 1, Macon, GA 31210 | (478) 750-7507 | Fax (478) 750-9002 | www.thesummitgroupmacon.com

For additional information contact:

~or~

REX YODER | Cell (478) 394-5777 | ryoder@thesummitgroupmacon.com

JAMES L. ROLLINS, JR ("JIM") | Cell (478) 361-4400 | jrollins@thesummitgroupmacon.com