

Highway 247 Connector (Near Walker Road)
Byron, GA 31008
Peach County

\$295,000
COMMERCIAL LAND



- ±8.24 acres
- Water and sewer available
- Approximately 400 frontage feet on Hwy 247 Connector
- Zoned C-3/PUD
- Great location approximately 1.5 miles west of Interstate 75 (Exit 146) and adjacent to the Medical Center of Peach County, Navicent Health



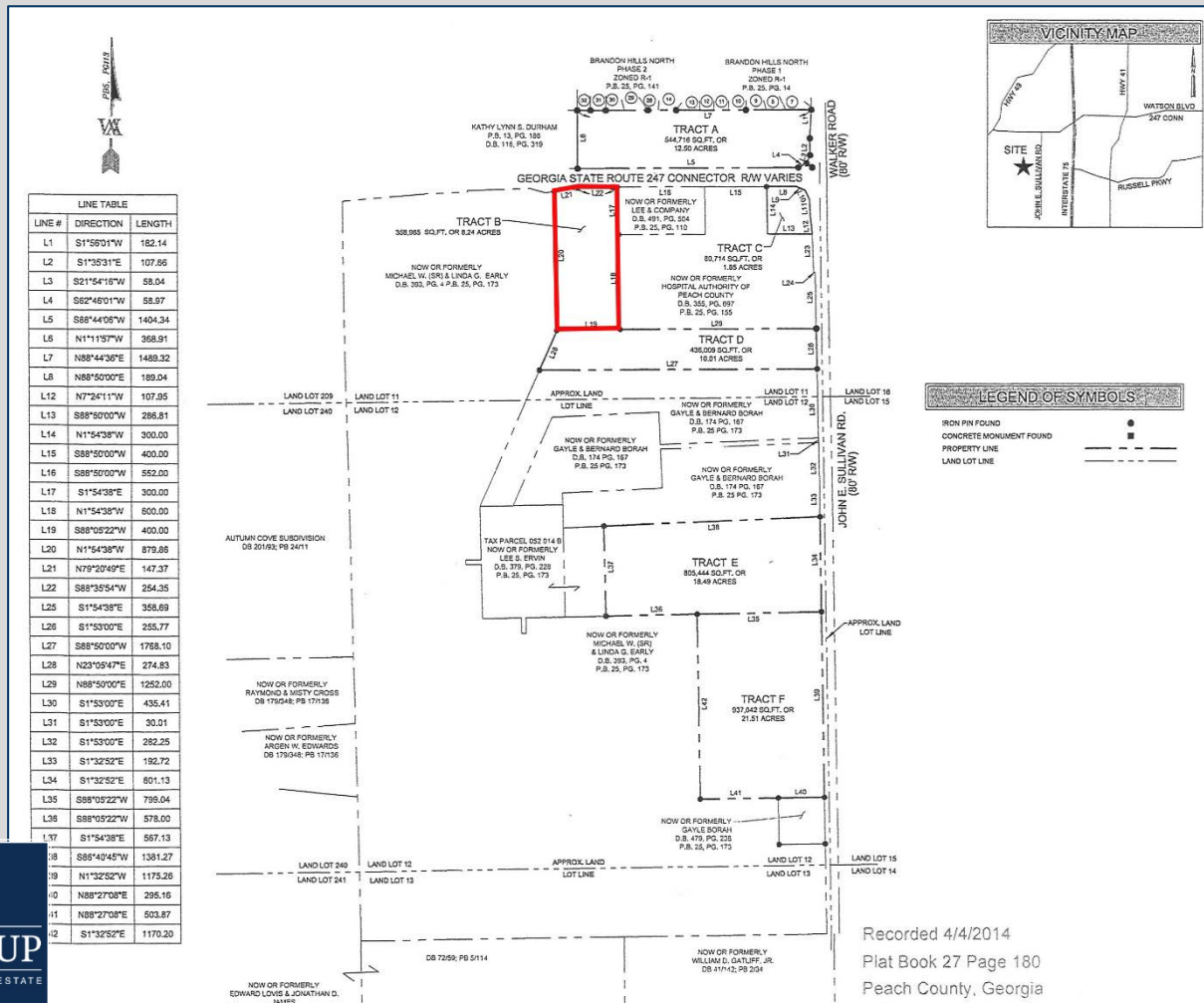
4124 Arkwright Road, Suite 1, Macon, GA 31210 | (478) 750-7507 | Fax (478) 750-9002 | www.thesummitgroupmacon.com

For additional information contact: **KEVIN HARKINS** | Cell (478) 338-0623 | kharkins@thesummitgroupmacon.com

Highway 247 Connector (Near Walker Road)

Byron, GA 31008

Peach County



The information contained herein has been compiled from various sources, both private and public. It is accurate and complete only to the extent to which The Summit Group has been able to ascertain from third party sources. As such, no warranty or guarantee is given or implied with regard to the accuracy or completeness of any information contained herein. Any interested party shall be required to conduct its own due diligence and investigations to verify, review, audit, or otherwise insure the information contained herein.

Recorded 4/4/2014
 Plat Book 27 Page 180
 Peach County, Georgia