

3726-3770 Bloomfield Village Drive  
(3730 Eisenhower Parkway)  
Macon, GA 31206  
Bibb County

LEASE SPACE AVAILABLE  
**BLOOMFIELD VILLAGE**  
**SHOPPING CENTER**



AVAILABILITY

Suite 3750	4,000 SF	\$8/SF, NNN
Suite 3742	1,800 SF	\$12/SF, NNN
Suite 3748**	1,600 SF	\$18.75/SF, NNN

\*CT&I estimate: \$2/SF

\*\* Includes restaurant equipment (Call agent for more details)

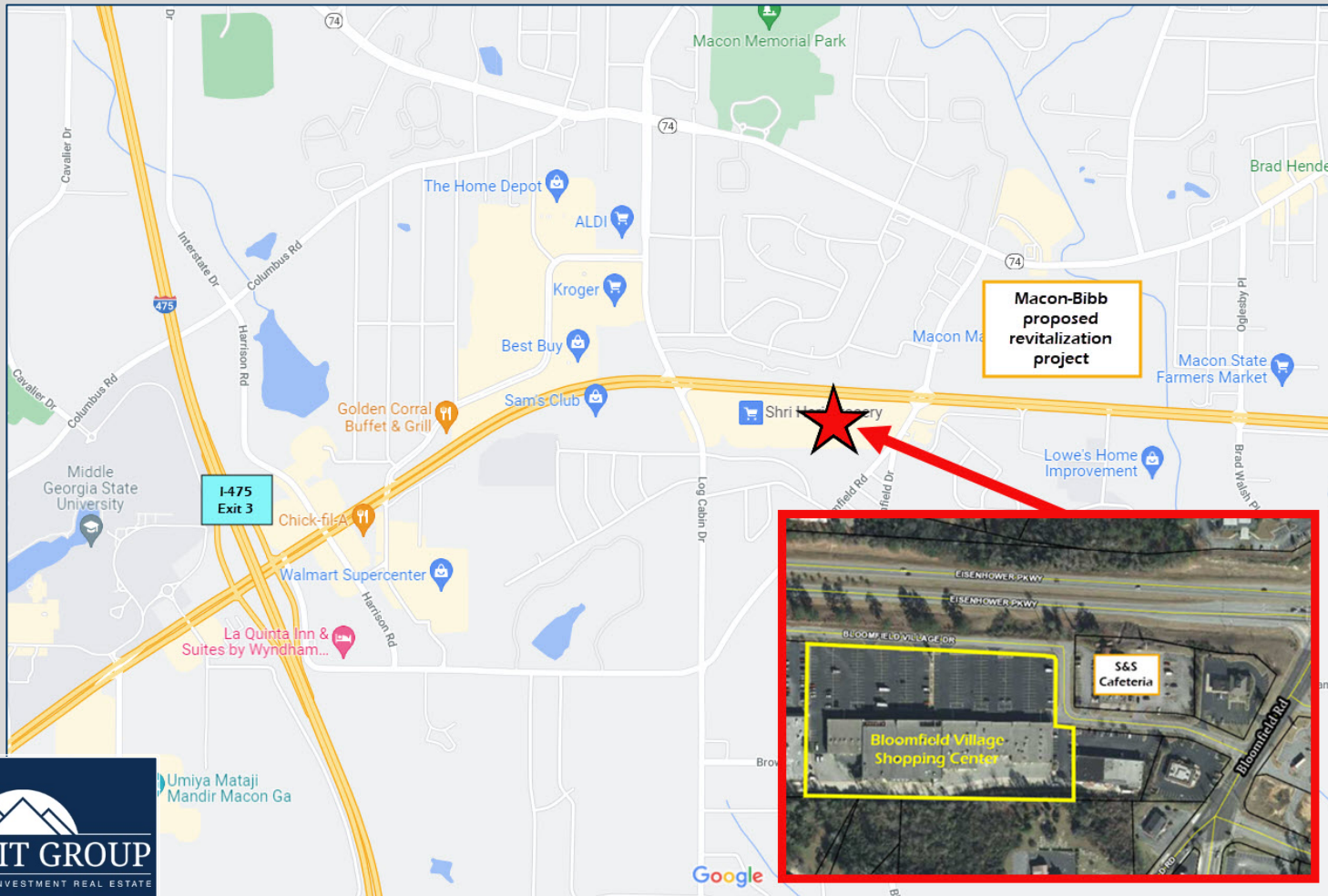
- Total building size: 73,392 SF (built in 1977)
- Traffic Count (GDOT 2020 estimate):
  - Eisenhower Parkway – 18,200 vpd
- High traffic location between I-75 and I-475
- In close proximity to the newly proposed revitalization project and amphitheater at the former Macon Mall



4124 Arkwright Road, Suite 1, Macon, GA 31210 | (478) 750-7507 | Fax (478) 750-9002 | [www.thesummitgroupmacon.com](http://www.thesummitgroupmacon.com)

For additional information contact: **KEVIN HARKINS** | Cell (478) 338-0623 | [kharkins@thesummitgroupmacon.com](mailto:kharkins@thesummitgroupmacon.com)

3726-3770 Bloomfield Village Drive  
(3730 Eisenhower Parkway)  
Macon, GA 31206  
Bibb County



The information contained herein has been compiled from various sources, both private and public. It is accurate and complete only to the extent to which The Summit Group has been able to ascertain from third party sources. As such, no warranty or guarantee is given or implied with regard to the accuracy or completeness of any information contained herein. Any interested party shall be required to conduct its own due diligence and investigations to verify, review, audit, or otherwise insure the information contained herein.