



SHURLING PLAZA SPACE FOR LEASE

1605, 1707 & 1897 SHURLING DRIVE
MACON, GA 31211
BIBB COUNTY

±119,413 SF MULTI-TENANT RETAIL
CENTER

SEE PAGE 2 FOR LEASE
RATES



KEVIN HARKINS C: 478.338.0623 | ADAM STEAD C: 706.662.2232
KHARKINS@THESUMMITGROUPMACON.COM | ASTEAD@THESUMMITGROUPMACON.COM
4124 ARKWRIGHT ROAD, SUITE 1, MACON, GA 31210
O: 478.750.7507

WWW.THESUMMITGROUPMACON.COM



PROPERTY INFORMATION

- Availability:

Suite 1679: ±8,000 SF	Lease Rate: \$6/SF
Suite 1701: ±2,200 SF	Lease Rate: \$12/SF
Suite 1745: ±935 SF	Lease Rate: \$12/SF
Suite 1747: ±935 SF	Lease Rate: \$12/SF
Suite 1761-A: ±1,774 SF	Lease Rate: \$12/SF
Suite 1761-B: ±1,041 SF	Lease Rate: \$12/SF
(±1,100 upstairs & ±1,100 downstairs)	
Suite 1767: ±800 SF	Lease Rate: \$12/SF

- 3-year minimum lease term on all suites

- Located near the intersection of Shurling Drive and New Clinton Road. Co-tenants include Daily Dealz, Cricket Wireless, Rent-A-Center, Allstate Insurance and more.



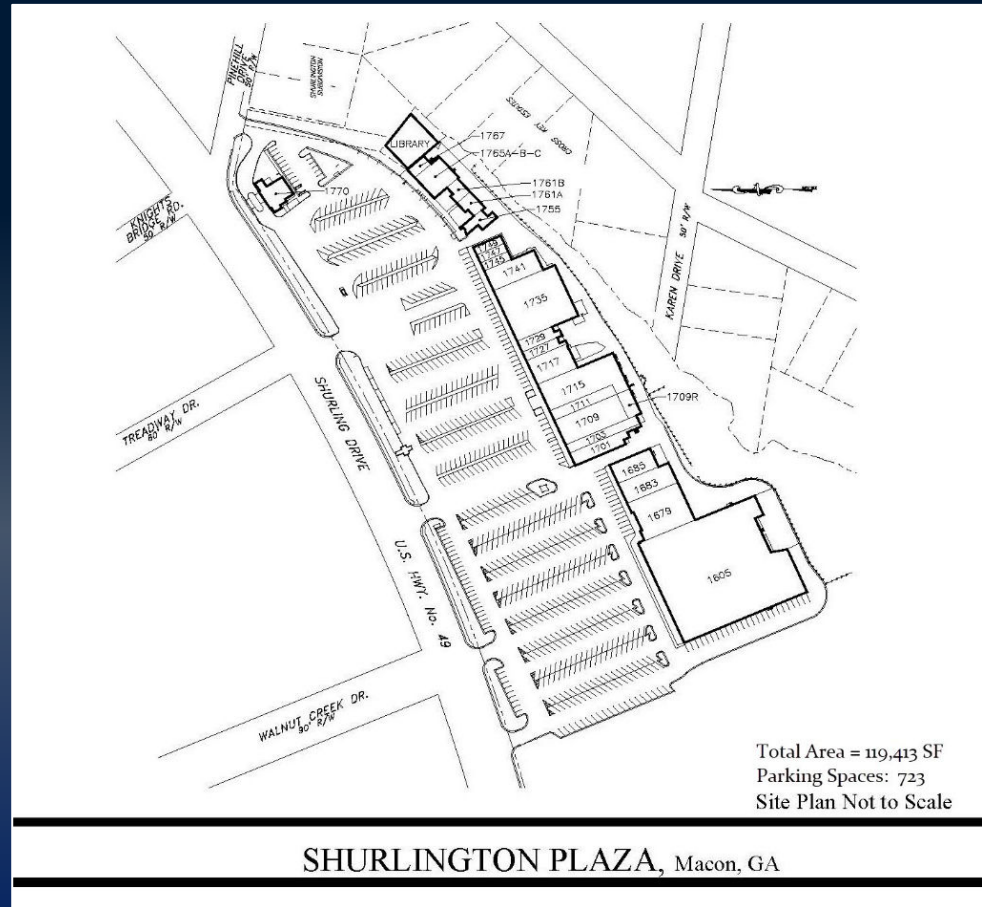
SHURLINGTON PLAZA, Macon, GA

Suite #	Area	Tenant	Suite #	Area	Tenant
1605	47,180 SF	Daily Dealz	1735	12,850 SF	Dollar Tree Store
1679	8,000 SF	AVAILABLE	1741	4,000 SF	Rent-A-Center #1290
1683	4,000 SF	Cricket Wireless	1745	935 SF	AVAILABLE
1685	3,200 SF	Leased	1747	935 SF	AVAILABLE
1701	2,200 SF	AVAILABLE	1749	935 SF	K-Style's Beauty Salon
1703	2,200 SF	Art of Nails	1755	1,275 SF	Allstate Insurance
1709	5,700 SF	Leased	1761A	1,774 SF	AVAILABLE
1711	2,500 SF	Johona's Beauty Shop	1761B	1,041 SF	AVAILABLE
1715-17	12,590 SF	Blackberry Lounge	1765-2A&B	2,200 SF	Leased
1727	1,400 SF	Dominion Fitness	1765-A	1,800 SF	Kory Solomon dba Elite Auto Connection
1729	1,050 SF	Swain Dance	1767	800 SF	AVAILABLE
1705 LL	25,290 SF	-	1770	2,541 SF	Fall off the Bone Restr.

1605, 1707 & 1897 SHURLING DRIVE
MACON, GA 31211
BIBB COUNTY



SITE PLAN

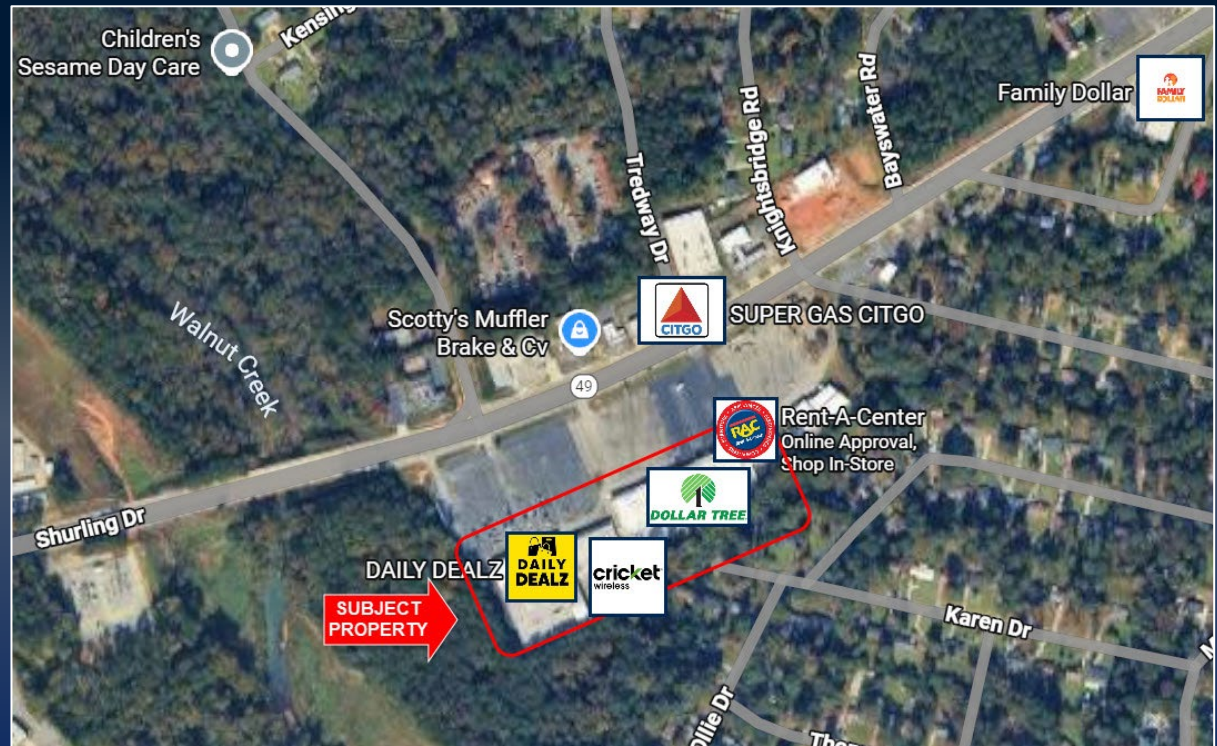


1605, 1707 & 1897 SHURLING DRIVE
MACON, GA 31211
BIBB COUNTY



MAP

- Traffic Count (GDOT 2024:)
Shurling Drive – 23,400 VPD



The information contained herein has been compiled from various sources, both private and public. It is accurate and complete only to the extent to which The Summit Group has been able to ascertain from third party sources. As such, no warranty or guarantee is given or implied with regard to the accuracy or completeness of any information contained herein. Any interested party shall be required to conduct its own due diligence and investigations to verify, review, audit, or otherwise insure the information contained herein.

