

220 Richard Ivey Parkway  
Macon, GA 31026  
Bibb County

**\$140,000**  
**COMMERCIAL LOT**



- 4.79 acres
- Ideal location for office-warehouse
- Zoned PDC
- Public water and sewer to site
- Located in the cul-de-sac of Richard Ivey Parkway off Ivey Drive and Eisenhower Parkway (US Hwy 80)
- Approximately 1 mile west of Interstate 475 (Exit 3)



4124 Arkwright Road, Suite 1, Macon, GA 31210 | (478) 750-7507 | Fax (478) 750-9002 | [www.thesummitgroupmacon.com](http://www.thesummitgroupmacon.com)

For additional information contact: **BO ELLIOTT** | Cell (478) 718-2049 | [belliott@thesummitgroupmacon.com](mailto:belliott@thesummitgroupmacon.com)

220 Richard Ivey Parkway  
Macon, GA 31026  
Bibb County



4124 Arkwright Road, Suite 1, Macon, GA 31210 | (478) 750-7507 | Fax (478) 750-9002 | [www.thesummitgroupmacon.com](http://www.thesummitgroupmacon.com)

For additional information contact: **BO ELLIOTT** | Cell (478) 718-2049 | [belliott@thesummitgroupmacon.com](mailto:belliott@thesummitgroupmacon.com)

The information contained herein has been compiled from various sources, both private and public. It is accurate and complete only to the extent to which The Summit Group has been able to ascertain from third party sources. As such, no warranty or guarantee is given or implied with regard to the accuracy or completeness of any information contained herein. Any interested party shall be required to conduct its own due diligence and investigations to verify, review, audit, or otherwise insure the information contained herein.

220 Richard Ivey Parkway  
Macon, GA 31026  
Bibb County



RENFROE BUSINESS PARK

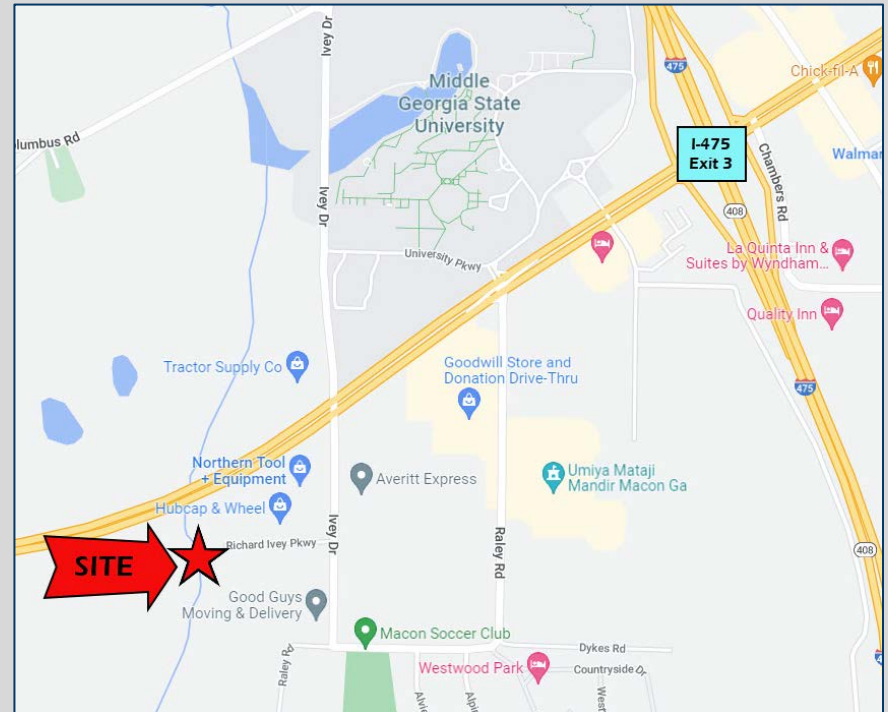
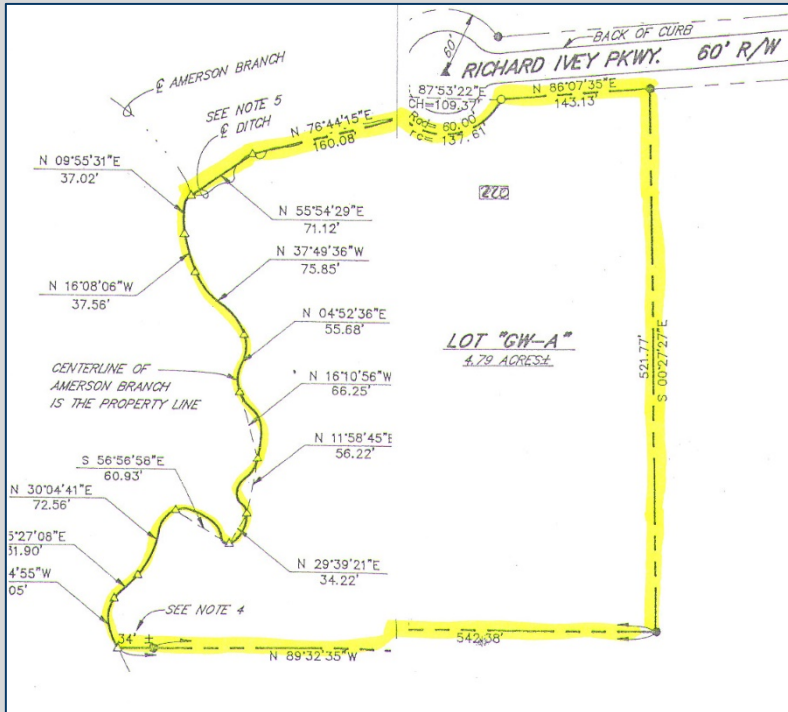


4124 Arkwright Road, Suite 1, Macon, GA 31210 | (478) 750-7507 | Fax (478) 750-9002 | [www.thesummitgroupmacon.com](http://www.thesummitgroupmacon.com)

For additional information contact: **BO ELLIOTT** | Cell (478) 718-2049 | [belliot@thesummitgroupmacon.com](mailto:belliot@thesummitgroupmacon.com)

The information contained herein has been compiled from various sources, both private and public. It is accurate and complete only to the extent to which The Summit Group has been able to ascertain from third party sources. As such, no warranty or guarantee is given or implied with regard to the accuracy or completeness of any information contained herein. Any interested party shall be required to conduct its own due diligence and investigations to verify, review, audit, or otherwise insure the information contained herein.

# 220 Richard Ivey Parkway Macon, GA 31026 Bibb County



4124 Arkwright Road, Suite 1, Macon, GA 31010 | (478) 750-7507 | Fax (478) 750-9002 | [www.thesummitgroupmacon.com](http://www.thesummitgroupmacon.com)

For additional information contact: **BO ELLIOTT** | Cell (478) 718-2049 | [belliott@thesummitgroupmacon.com](mailto:belliott@thesummitgroupmacon.com)

The information contained herein has been compiled from various sources, both private and public. It is accurate and complete only to the extent to which The Summit Group has been able to ascertain from third party sources. As such, no warranty or guarantee is given or implied with regard to the accuracy or completeness of any information contained herein. Any interested party shall be required to conduct its own due diligence and investigations to verify, review, audit, or otherwise insure the information contained herein.