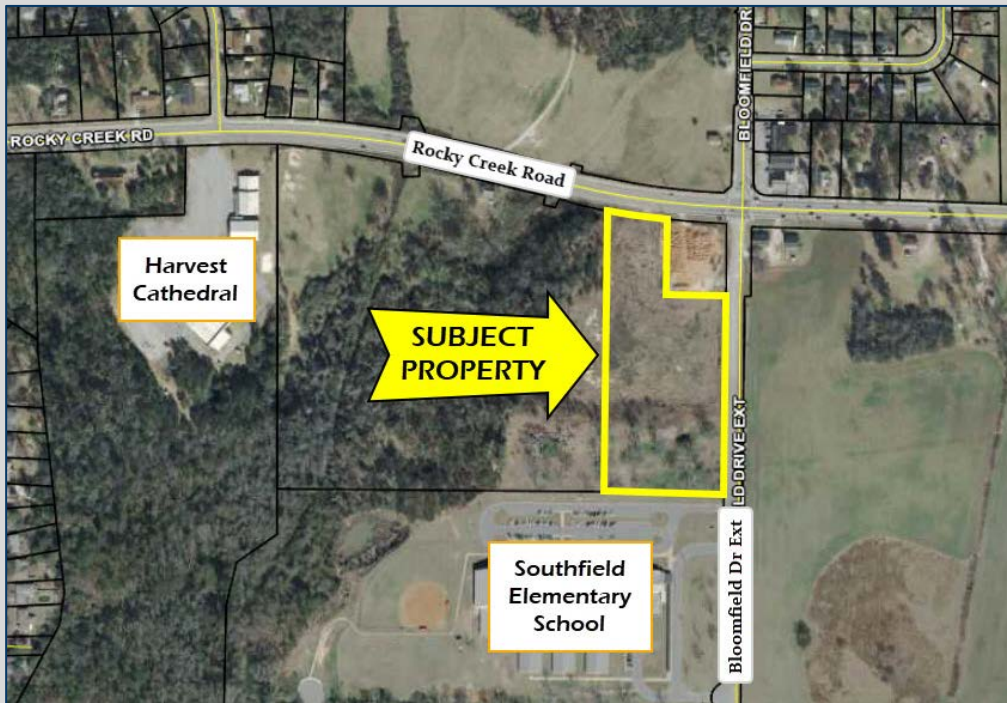


2194 Rocky Creek Road  
Macon, GA 31206  
Bibb County

**\$150,000**  
**COMMERCIAL LAND**



- 6.37 acres
- Water and sewer available
- ±177 frontage feet on Rocky Creek Road and ±620 frontage feet on Bloomfield Drive Ext.
- Zoned C-1 (Commercial)
- Located next to Southfield Elementary School at the intersection of Rocky Creek Road and Bloomfield Drive



4124 Arkwright Road, Suite 1, Macon, GA 31210 | (478) 750-7507 | Fax (478) 750-9002 | [www.thesummitgroupmacon.com](http://www.thesummitgroupmacon.com)

For additional information contact: **BO ELLIOTT** | Cell (478) 718-2049 | [belliott@thesummitgroupmacon.com](mailto:belliott@thesummitgroupmacon.com)

~or~ **KING KEMPER, CCIM** | Cell (478) 957-1920 | [kkemper@thesummitgroupmacon.com](mailto:kkemper@thesummitgroupmacon.com)

The information contained herein has been compiled from various sources, both private and public. It is accurate and complete only to the extent to which The Summit Group has been able to ascertain from third party sources. As such, no warranty or guarantee is given or implied with regard to the accuracy or completeness of any information contained herein. Any interested party shall be required to conduct its own due diligence and investigations to verify, review, audit, or otherwise insure the information contained herein.