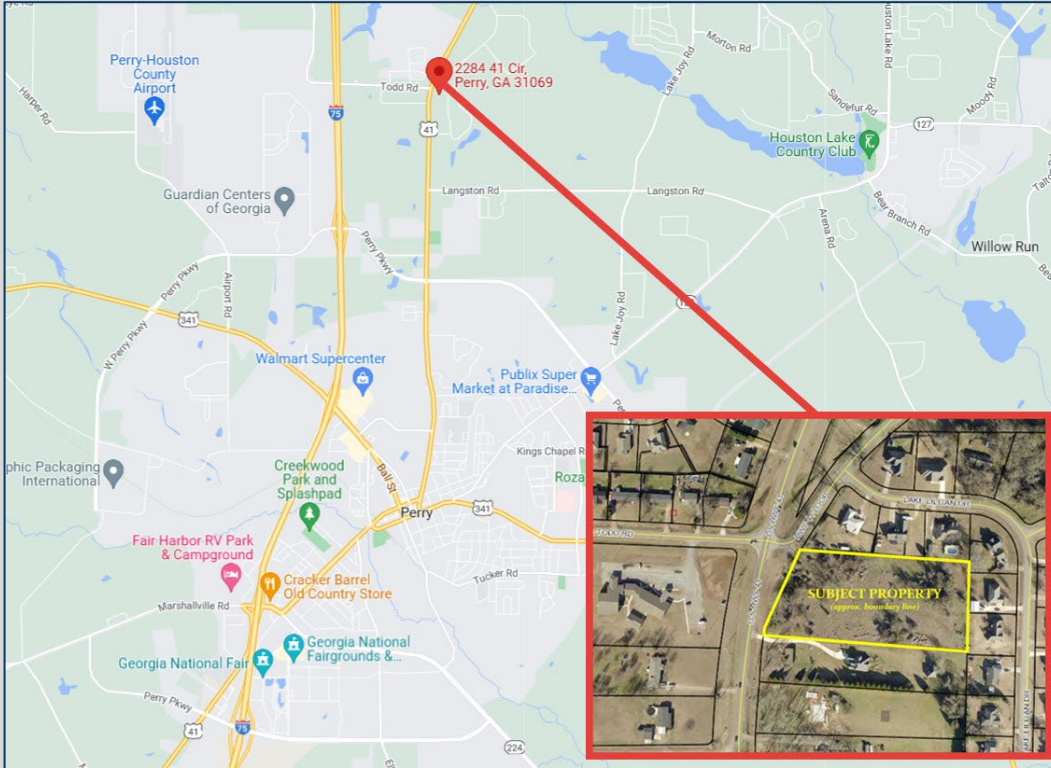


2284 N Highway 41
Perry, GA 31069
Houston County

Reduced Price! \$175,000



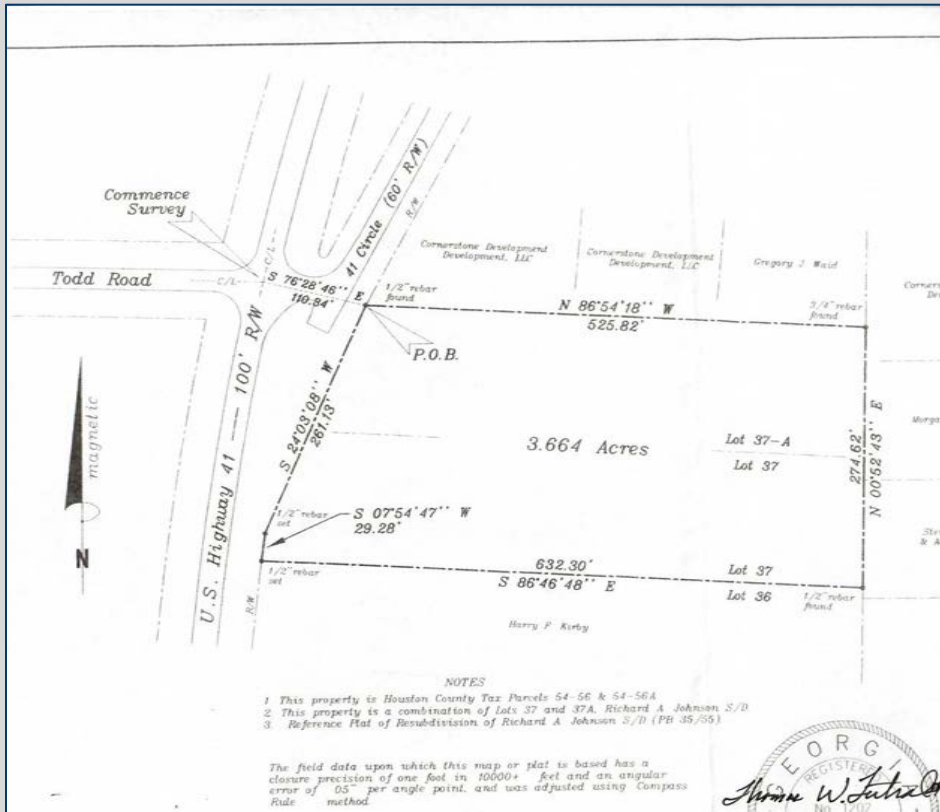
- 3.66 acres
- Zoned R-AG
- Approximately 290 frontage feet on Highway 41
- Located approximately 3.5 miles north of downtown Perry and 2.1 miles from Interstate 75 (Exit 138)



4124 Arkwright Road, Suite 1, Macon, GA 31210 | (478) 750-7507 | Fax (478) 750-9002 | www.thesummitgroupmacon.com

For additional information contact: **ADAM BAILEY** | Cell (478) 733-7961 | abailey@thesummitgroupmacon.com

2284 N Highway 41
 Perry, GA 31069
 Houston County



Traffic Counts: (GDOT 2022 Published Data estimate)
 Highway 41 – 8,590 vpd

Demographics

	<u>1 Mile</u>	<u>3 Miles</u>	<u>5 Miles</u>
2022 Population:	1,687	13,459	50,099
2027 Population Estimate:	1,943	14,503	53,821
2022 Households:	662	5,267	18,339
2027 Households Estimate:	759	5,683	19,762
2022 Average HH Income:	\$96,620	\$97,437	\$103,366
2027 Average HH Income Estimate:	\$115,921	\$114,863	\$122,256



4124 Arkwright Road, Suite 1, Macon, GA 31210 | (478) 750-7507 | Fax (478) 750-9002 | www.thesummitgroupmacon.com

For additional information contact: **ADAM BAILEY** | Cell (478) 733-7961 | abailey@thesummitgroupmacon.com

The information contained herein has been compiled from various sources, both private and public. It is accurate and complete only to the extent to which The Summit Group has been able to ascertain from third party sources. As such, no warranty or guarantee is given or implied with regard to the accuracy or completeness of any information contained herein. Any interested party shall be required to conduct its own due diligence and investigations to verify, review, audit, or otherwise insure the information contained herein.