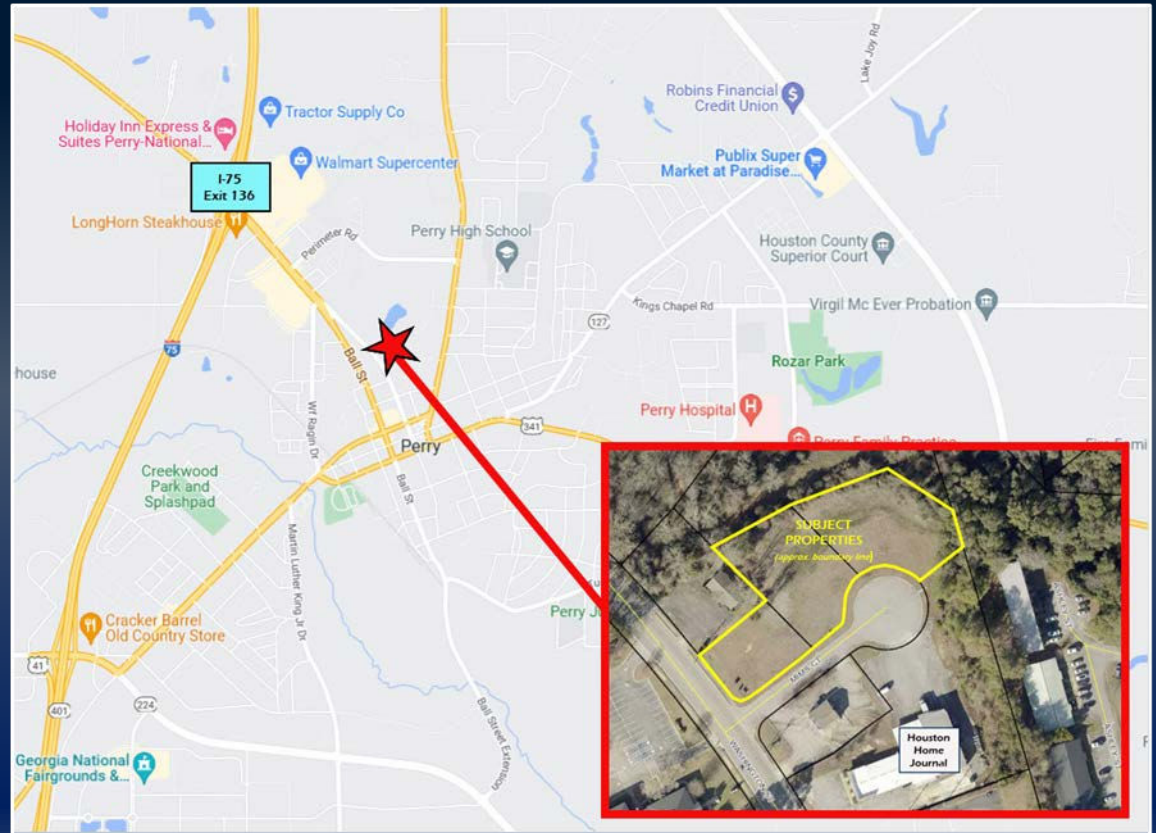


## DOWNTOWN PERRY COMMERCIAL LAND

104 & 108 MIMS COURT  
1218 WASHINGTON STREET  
PERRY, GA 31069  
HOUSTON COUNTY

1.17 ACRES

ASKING PRICE  
**\$300,000**



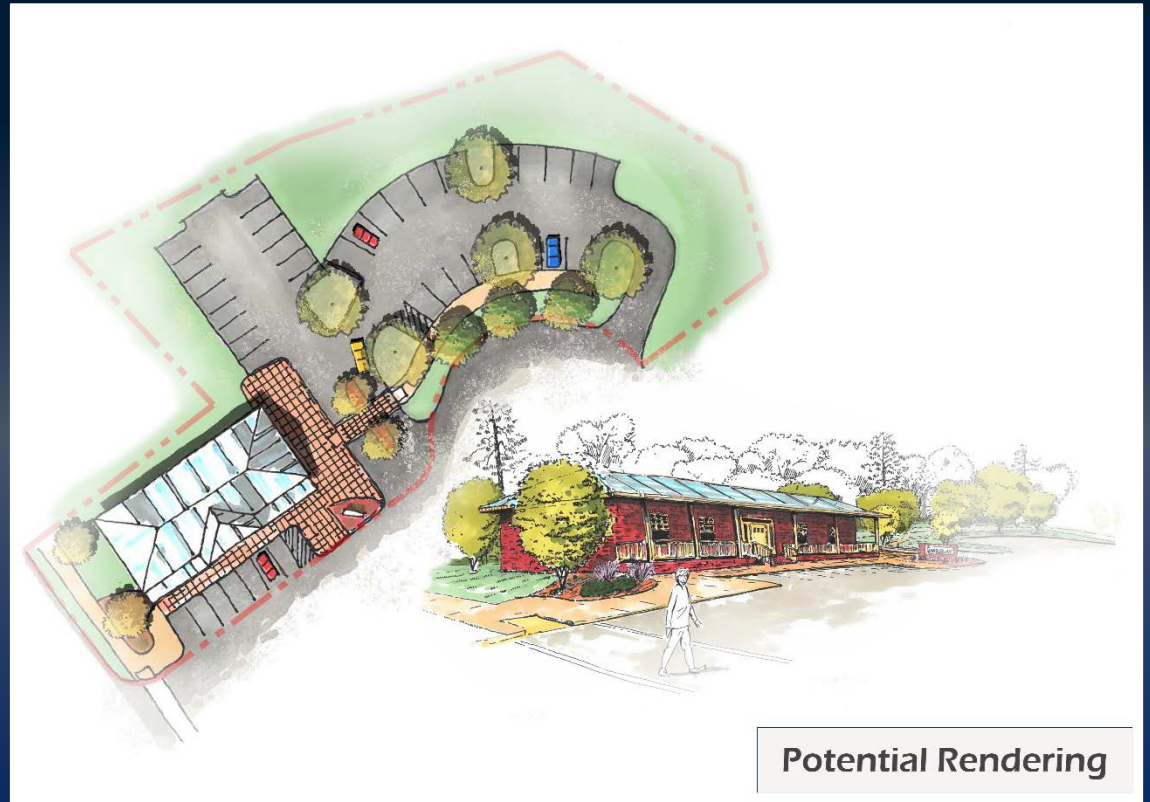
**DEREK FOSTER C: 478.997.1024 | KING KEMPER, CCIM C: 478.957.1920**  
DFOSTER@THESUMMITGROUPMACON.COM | KKEMPER@THESUMMITGROUPMACON.COM  
4124 ARKWRIGHT ROAD, SUITE 1, MACON, GA 31210  
**O: 478.750.7507**

WWW.THESUMMITGROUPMACON.COM



## PROPERTY INFORMATION

- Three (3) parcels totaling 1.17 acres
- Zoned C-2 (commercial)
- All utilities and sewer available
- Frontage at the corner of Washington Street and Mims Court
- Located across from City Hall and adjacent to the Houston Home Journal
- Highly desirable location at the entrance to downtown Perry with easy access to retail, restaurants, GA National Fairgrounds, and Interstate 75 (Exit 136)
- Ideal for office, retail or town home development

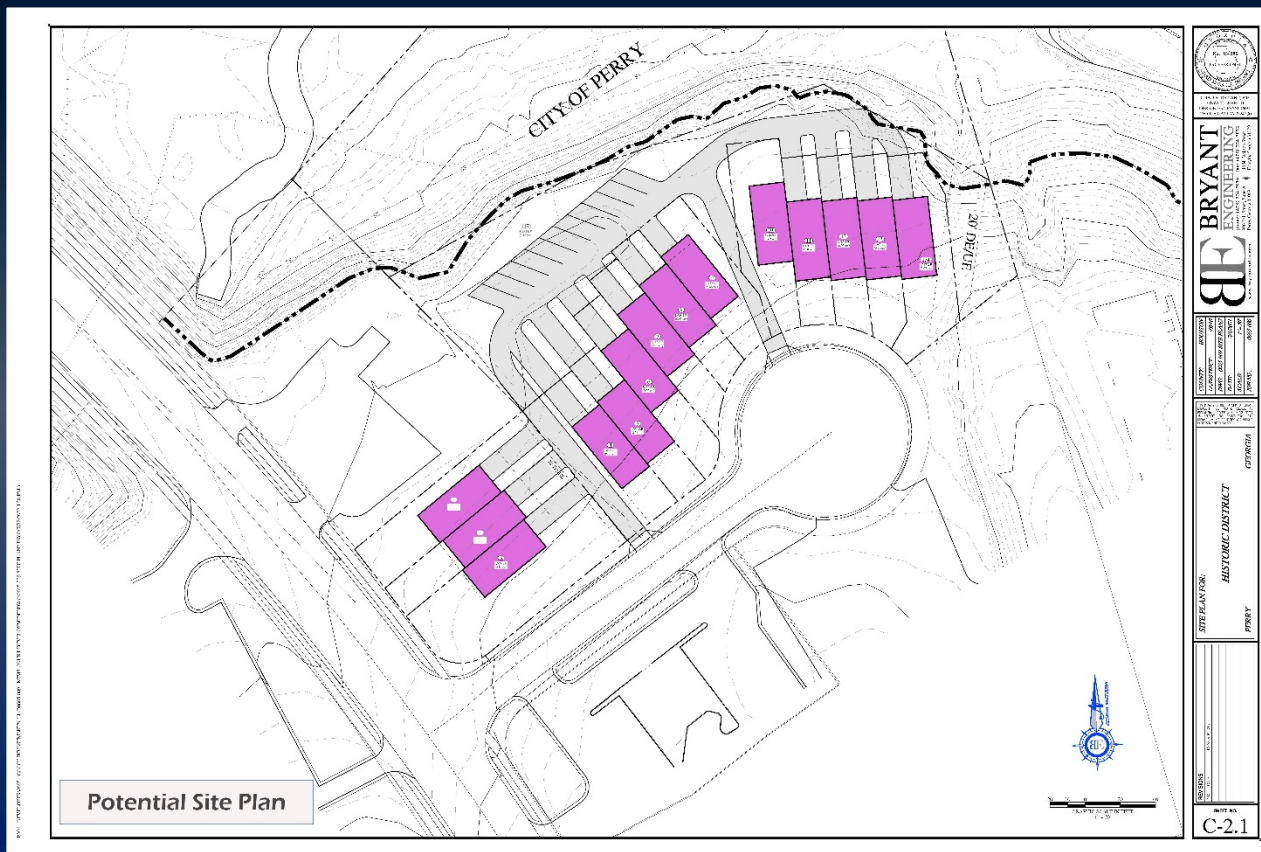


Potential Rendering

104 & 108 MIMS COURT & 1218 WASHINGTON STREET  
PERRY, GA 31069 (HOUSTON COUNTY)



# SITE PLAN



104 & 108 MIMS COURT & 1218 WASHINGTON STREET  
PERRY, GA 31069 (HOUSTON COUNTY)

