



GROUND FLOOR OFFICE SPACE FOR LEASE



**363 PIERCE AVENUE
MACON, GA 31204
BIBB COUNTY**

**LEASE RATE:
\$2,250/MO**



KEVIN HARKINS C: 478.338.0623

KHARKINS@THESUMMITGROUPMACON.COM

4124 ARKWRIGHT ROAD, SUITE 1 MACON, GA 31210

O: 478.750.7507

WWW.THESUMMITGROUPMACON.COM

PROPERTY INFORMATION

- +/- 2,400 SF office suite
- Total building size : ±4,310 SF
- Situated on .34 acre
- Zoned HR-3
- High traffic location near the intersection of Pierce Avenue and Vineville Avenue
- Convenient to Interstate 16, Interstate 75 and downtown Macon



363 PIERCE AVENUE
MACON, GA 31204
BIBB COUNTY

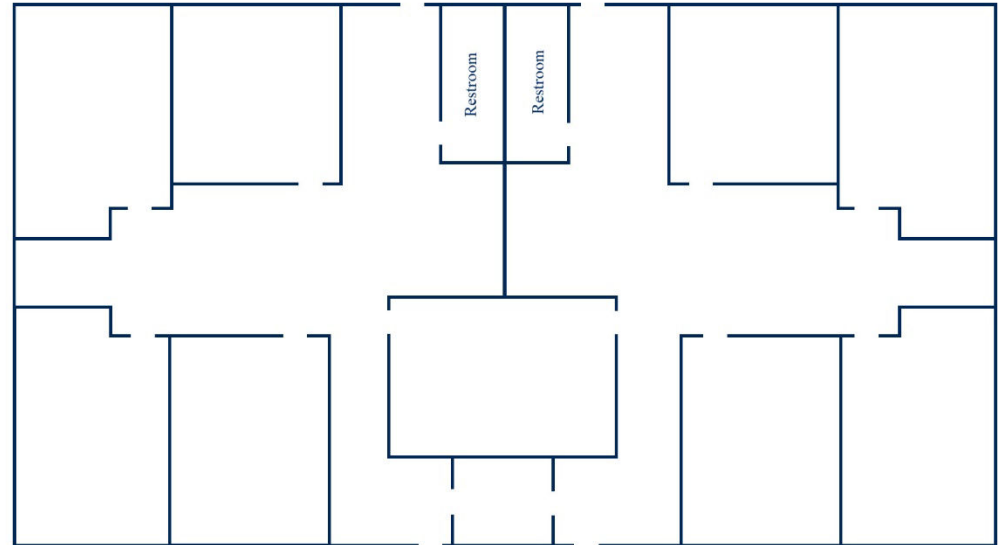


PROPERTY INFORMATION

- Ground floor available; second floor occupied by Kornegay Engineering
- Newly renovated (paint, carpet, lighting, etc.)
- On site parking with additional street parking

• On site parking with additional street parking

363 Pierce Avenue
Floor Plan NOT to Scale
TOTAL SF: ±2,400



363 PIERCE AVENUE
MACON, GA 31204
BIBB COUNTY



DEMOGRAPHICS

Traffic Counts: (GDOT 2021 Published Data estimate)

Pierce Avenue– 9,570 vpd
 Vineville Avenue– 18,000 vpd

Demographics

	<u>1 Mile</u>	<u>3 Miles</u>	<u>5 Miles</u>
2022 Population:	7,442	51,859	94,840
2027 Population Estimate:	7,353	51,658	94,256
2022 Households:	3,599	21,747	38,800
2027 Households Estimate:	3,573	21,775	38,780
2022 Average HH Income:	\$76,405	\$62,758	\$64,200
2027 Average HH Income Estimate:	\$101,178	\$77,839	\$78,714



363 PIERCE AVENUE
 MACON, GA 31204
 BIBB COUNTY



ADDITIONAL PHOTOS



The information contained herein has been compiled from various sources, both private and public. It is accurate and complete only to the extent to which The Summit Group has been able to ascertain from third party sources. As such, no warranty or guarantee is given or implied with regard to the accuracy or completeness of any information contained herein. Any interested party shall be required to conduct its own due diligence and investigations to verify, review, audit, or otherwise ensure the information contained herein.

