

COMMERCIAL SITE | I-475 VISIBILITY

**3000 HAWAIIAN
VILLAGE DRIVE
MACON, GA 31206
BIBB COUNTY**

48 ACRES

**SALES PRICE:
\$75,000/SURVEYED ACRE**



BO ELLIOTT C: 478.718.2049

BELLIOTT@THESUMMITGROUPMACON.COM

4124 ARKWRIGHT ROAD, SUITE 1, MACON, GA 31210

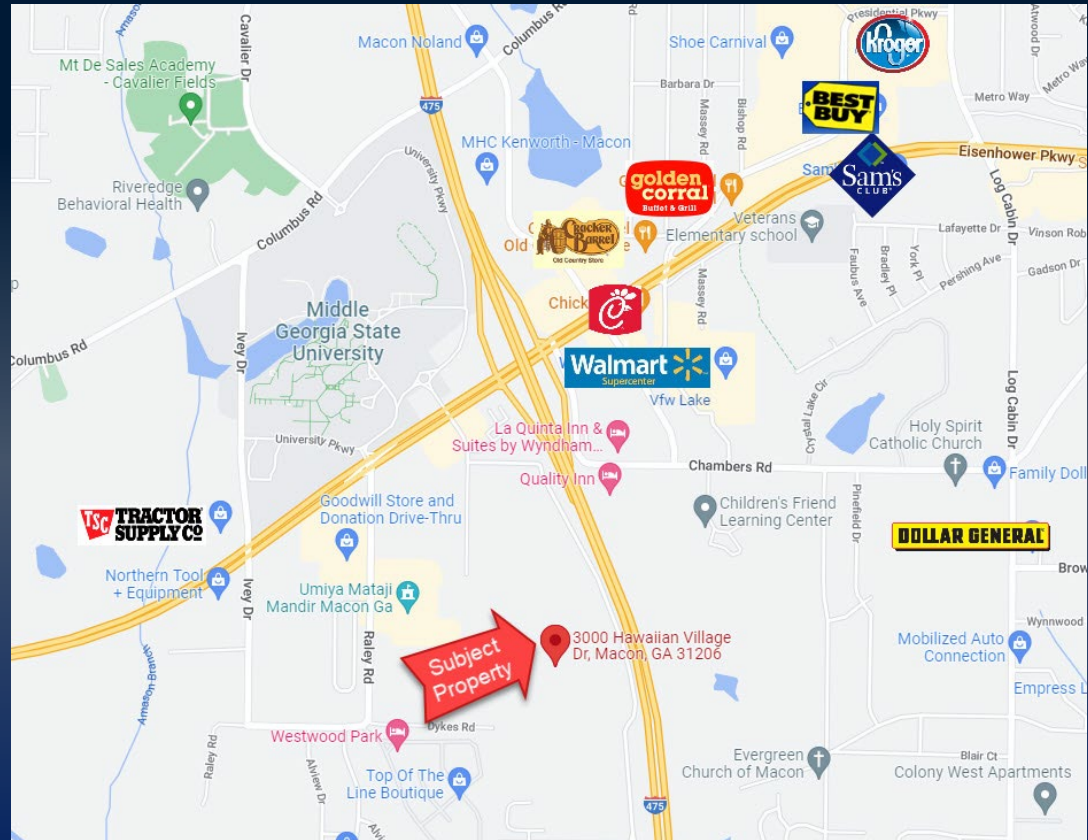
O: 478.750.7507

WWW.THESUMMITGROUPMACON.COM



PROPERTY INFORMATION

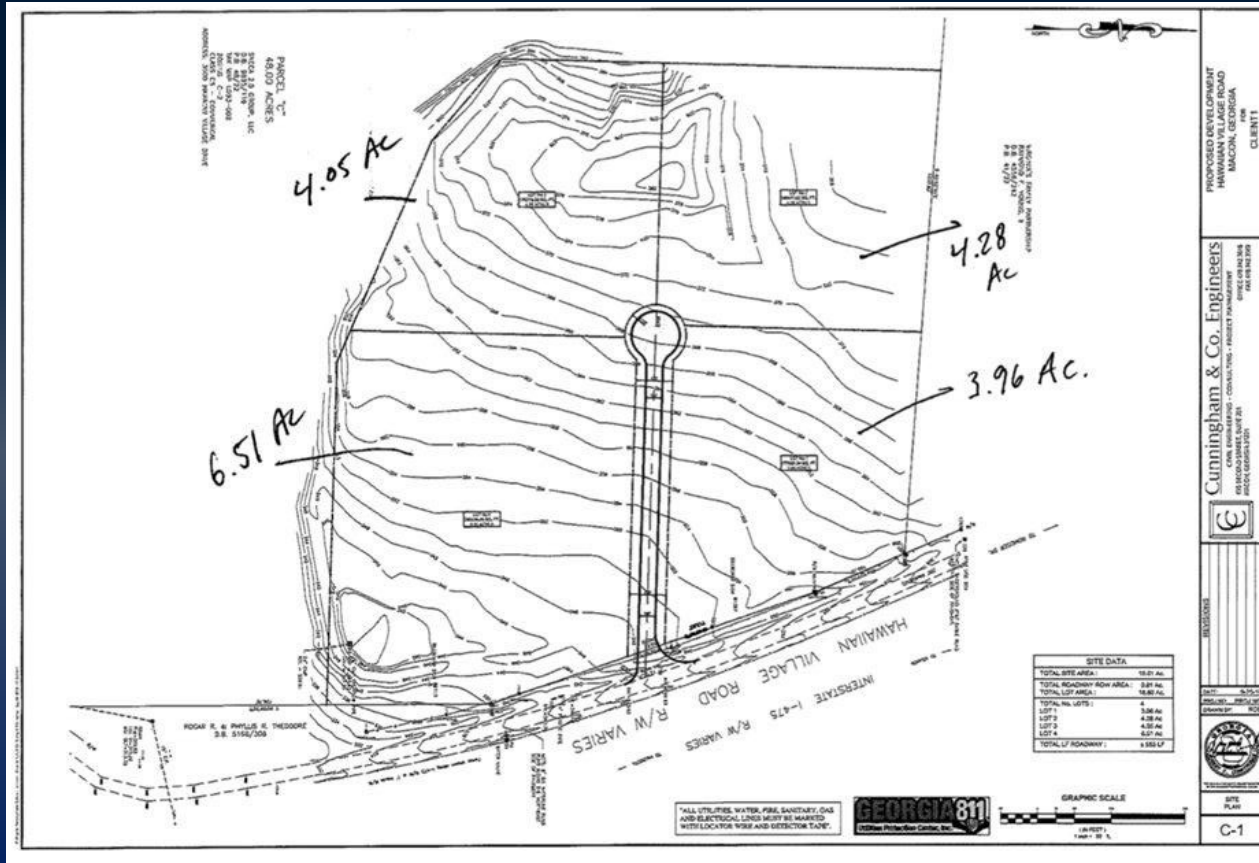
- 48 acres
- Approximately 1,450 feet of frontage on Interstate 475 (Exit 3) with access via Hawaiian Village Dr.
- Excellent location just off Eisenhower Parkway, less than one mile from Middle Georgia State University
- Area businesses include Walmart, Sam's Club, Best Buy, Kroger and many other restaurants and retailers
- Zoned C-2 (Commercial)
- Water and sewer available
- Cleared and graded



3000 HAWAIIAN VILLAGE DRIVE
MACON, GA 31206



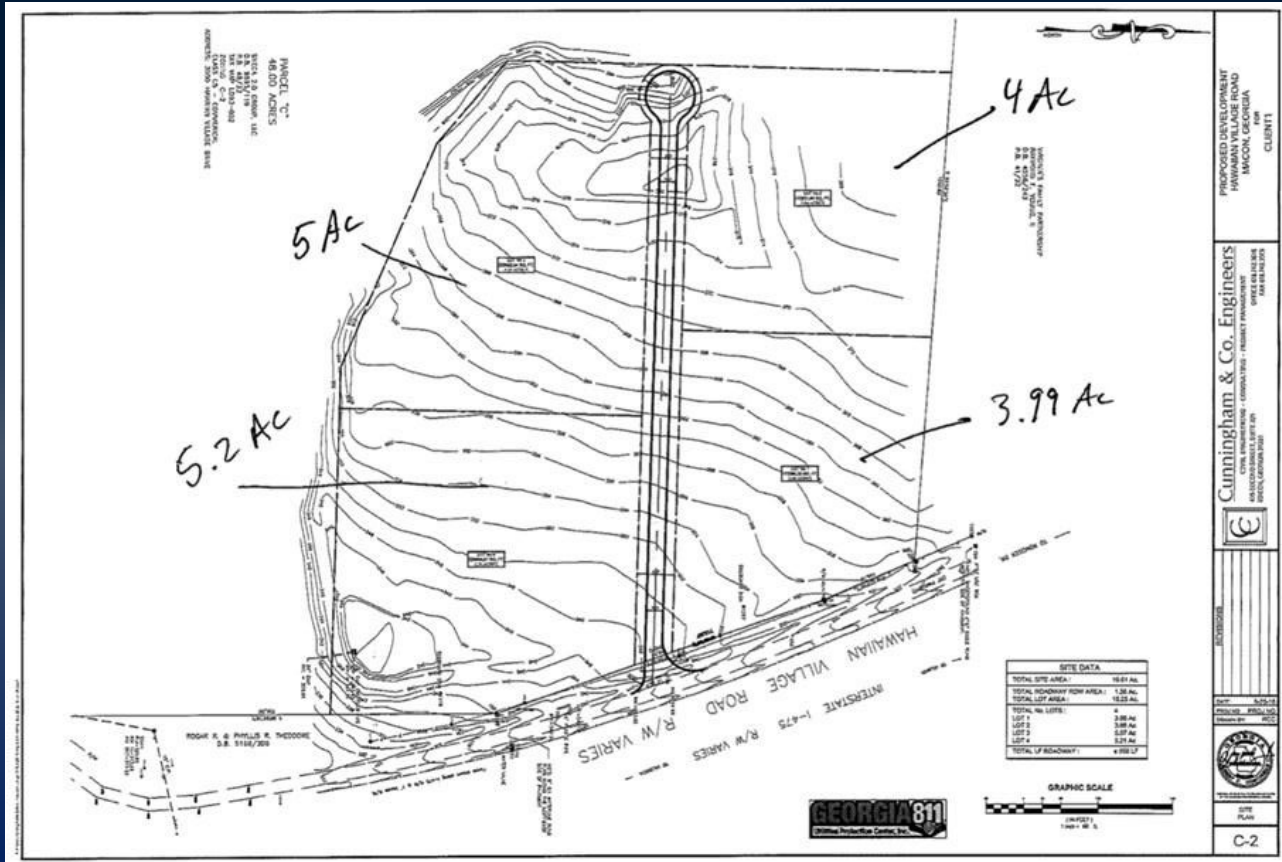
PROPOSED SITE
PLAN: OPTION 1



3000 HAWAIIAN VILLAGE DRIVE
MACON, GA 31206



PROPOSED SITE
PLAN: OPTION 2



3000 HAWAIIAN VILLAGE DRIVE
MACON, GA 31206



The information contained herein has been compiled from various sources, both private and public. It is accurate and complete only to the extent to which The Summit Group has been able to ascertain from third party sources. As such, no warranty or guarantee is given or implied with regard to the accuracy or completeness of any information contained herein. Any interested party shall be required to conduct its own due diligence and investigations to verify, review, audit, or otherwise insure the information contained herein.