

COMMERCIAL LAND I-75 VISIBILITY

RUSSELL PARKWAY AT N LEE ST.
FORSYTH, GA 31029
MONROE COUNTY

UP TO 5 ACRES

ASKING PRICE:
\$700,000 PER ACRE FOR FRONTAGE
\$350,000 PER ACRE FOR
NON- FRONTAGE

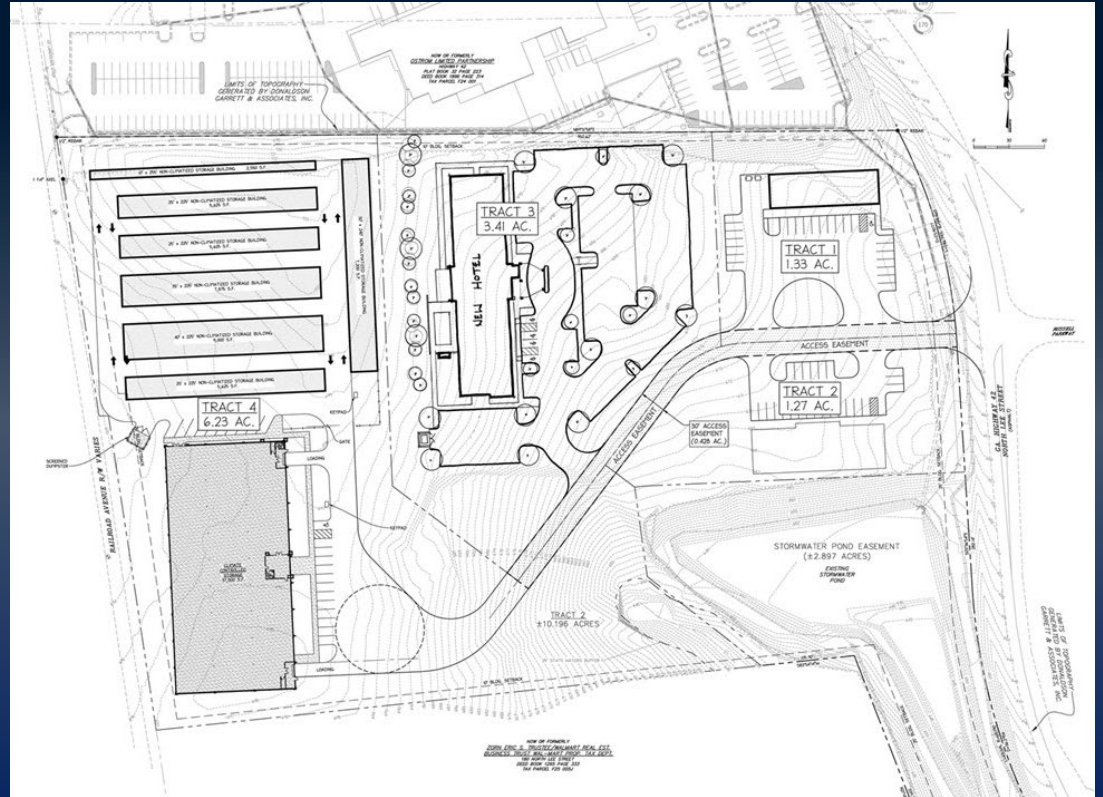


KING KEMPER, CCIM C: 478.957.1920
KKEMPER@THESUMMITGROUPMACON.COM
4124 ARKWRIGHT ROAD, SUITE 1 MACON, GA 31210
O: 478.750.7507
WWW.THESUMMITGROUPMACON.COM



PROPERTY INFORMATION

- High traffic location off Russell
- Parkway with frontage on N Lee Street
- Zoned: highway business
- Water and sewer available
- Master detention available
- Sites will be rough graded & developer will put drive in to storage facility at back of property
- Traffic Count (2021 GDOT estimate):
 - I-75 N – 87,000 vpd
 - I-75 S – 88,900 vpd
 - Cabiniss Rd – 11,800 vpd



RUSSELL PARKWAY AT N LEE ST
FORSYTH, GA 310292





RUSSELL PARKWAY AT N LEE ST FORSYTH, GA 310292



The information contained herein has been compiled from various sources, both private and public. It is accurate and complete only to the extent to which The Summit Group has been able to ascertain from third party sources. As such, no warranty or guarantee is given or implied with regard to the accuracy or completeness of any information contained herein. Any interested party shall be required to conduct its own due diligence and investigations to verify, review, audit, or otherwise ensure the information contained herein.