

LAND FOR SALE

3285 HARTLEY BRIDGE ROAD, MACON, GA 31216, BIBB COUNTY



- 2.09 Acres
- High traffic location with approximately 250 frontage feet on Hartley Bridge Road
- Zoned: R-1AAA currently
 - Proposed for commercial zoning
- Level topography
- Public water available

ASKING PRICE: \$95,000

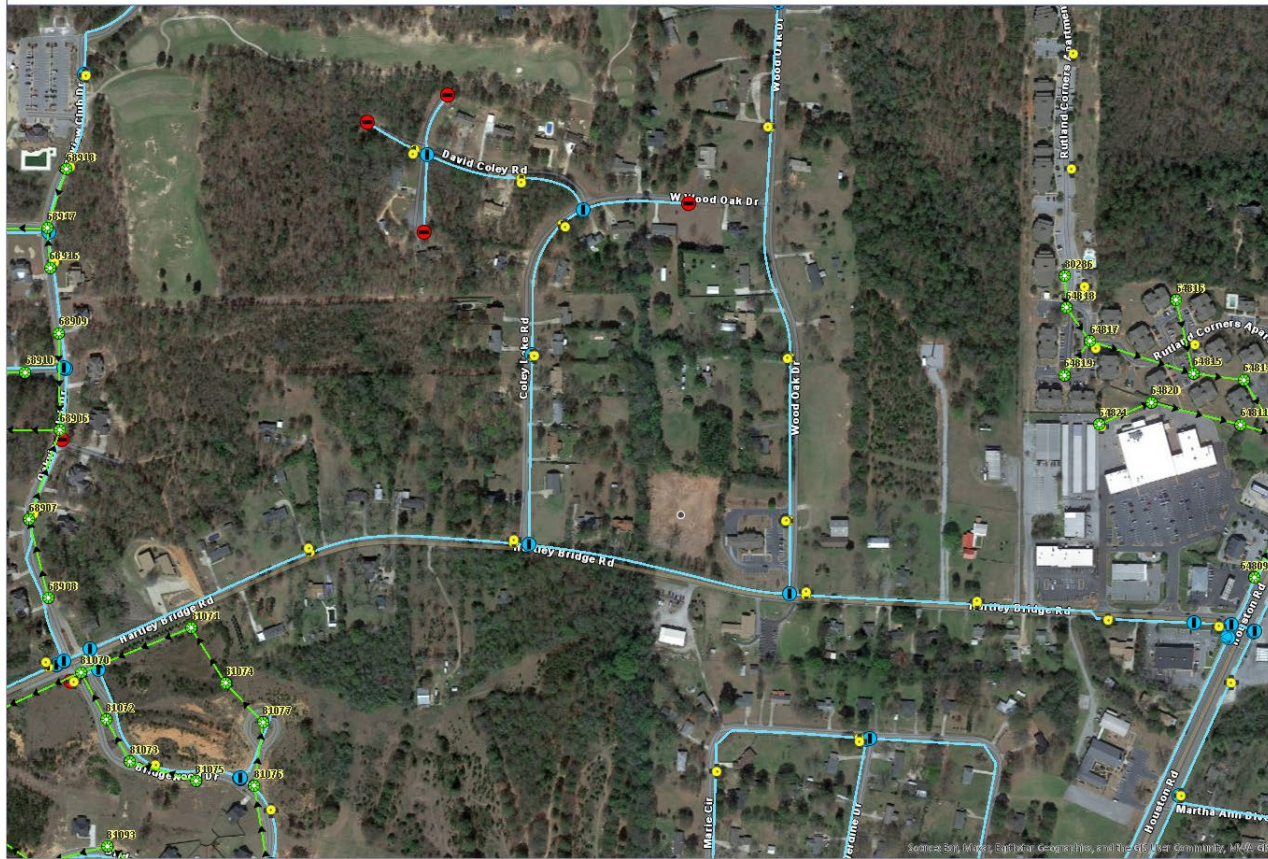


KING KEMPER, CCIM C: 478.957.1920
KKEMPER@THESUMMITGROUPMACON.COM
4124 ARKWRIGHT ROAD, SUITE 1 MACON, GA 31210
O: 478.750.7507
WWW.THESUMMITGROUPMACON.COM



WATER MAP

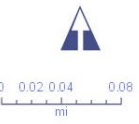
ArcGIS Web Map



Legend

- Macon-Bibb County
- Line
- Basin Specific Fees**
- 75 Industrial Park
- Exchange Outfall Sewer
- North Lincoln Road 30 Extension
- Northwest Middle & High School Sewer
- Pressurized Sewer Main
- Sewer Air Release Valve
- Lift Stations
- MWA
- Private
- Gravity Mains**
- all other variations
- MWA, Our Agency
- Private

- Manholes**
- all other variations
- Jones Manhole
- MWA Manhole



Map created using data from the Macon Water Authority's (MWA) GIS. These data are provided AS IS without warranty of any kind, implied or express, as to the information's accuracy or level of completeness. Maps and data provided by MWA are to be used for reference purposes only.



3285 HARTLEY BRIDGE ROAD MACON, GA 31216



The information contained herein has been compiled from various sources, both private and public. It is accurate and complete only to the extent to which The Summit Group has been able to ascertain from third party sources. As such, no warranty or guarantee is given or implied with regard to the accuracy or completeness of any information contained herein. Any interested party shall be required to conduct its own due diligence and investigations to verify, review, audit, or otherwise ensure the information contained herein.