

LEASE SPACE AVAILABLE | PLANTATION COMMONS II

6501 PEAKE ROAD,
BUILDING 950
MACON, GEORGIA 31210
BIBB COUNTY

LEASE RATE
\$15.50/SF



ADAM BAILEY C: 478.733.7961
ABAILEY@THESUMMITGROUPMACON.COM
4124 ARKWRIGHT ROAD, SUITE 1 MACON, GA 31210
O: 478.750.7507
WWW.THESUMMITGROUPMACON.COM



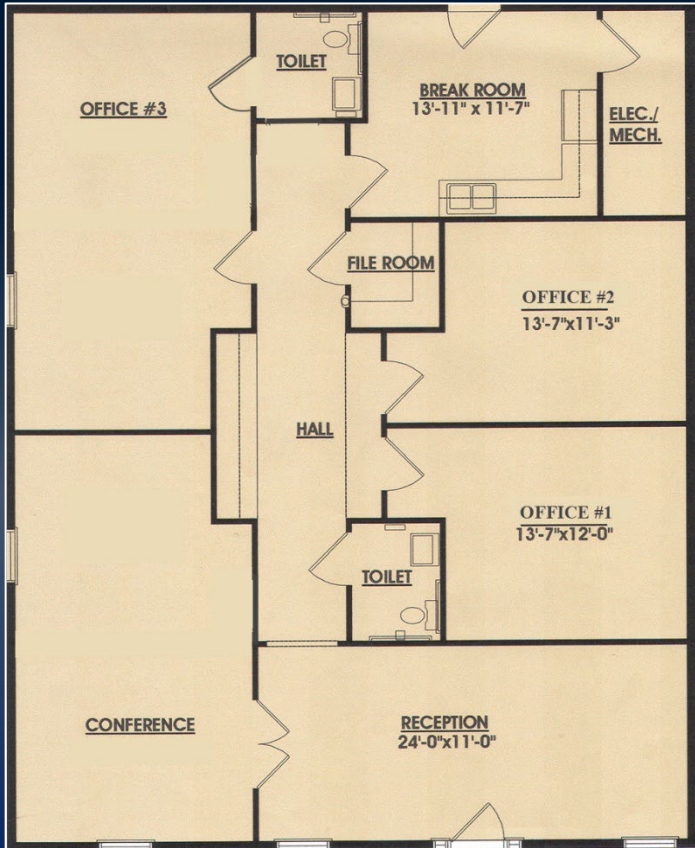
PROPERTY INFORMATION

- 1,775 SF professional office suite
- Located off Zebulon Road approximately 1 mile from Interstate 475 (Exit 9)
- Includes reception area, three (3) offices, conference room, break room and two (2) restrooms
- Built in 2001
- Convenient to Kroger, Lowe's, Walmart Supercenter, along with many other retailers and restaurants



6501 PEAKE ROAD, BUILDING 950
MACON, GA 31210





6501 PEAKE ROAD, BUILDING 950
MACON, GA 31210



DEMOGRAPHICS

Demographics

	1 Mile	3 Miles	5 Miles
2023 Population:	4,656	22,643	59,077
2028 Population Estimate:	4,929	22,720	58,572
2023 Households:	1,878	8,994	24,743
2028 Households Estimate:	2,042	9,155	24,824
2023 Average HH Income:	\$116,377	\$125,471	\$103,440
2028 Average HH Income Estimate:	\$139,154	\$148,040	\$121,907



**6501 PEAKE ROAD, BUILDING 950
MACON, GA 31210**

