

# PRE-LEASING | THE ENCORE AT THE PARKWAY

1904 HOUSTON LAKE ROAD, PERRY, GA 31069, HOUSTON COUNTY



**LEASE RATE: \$32/SF NNN**

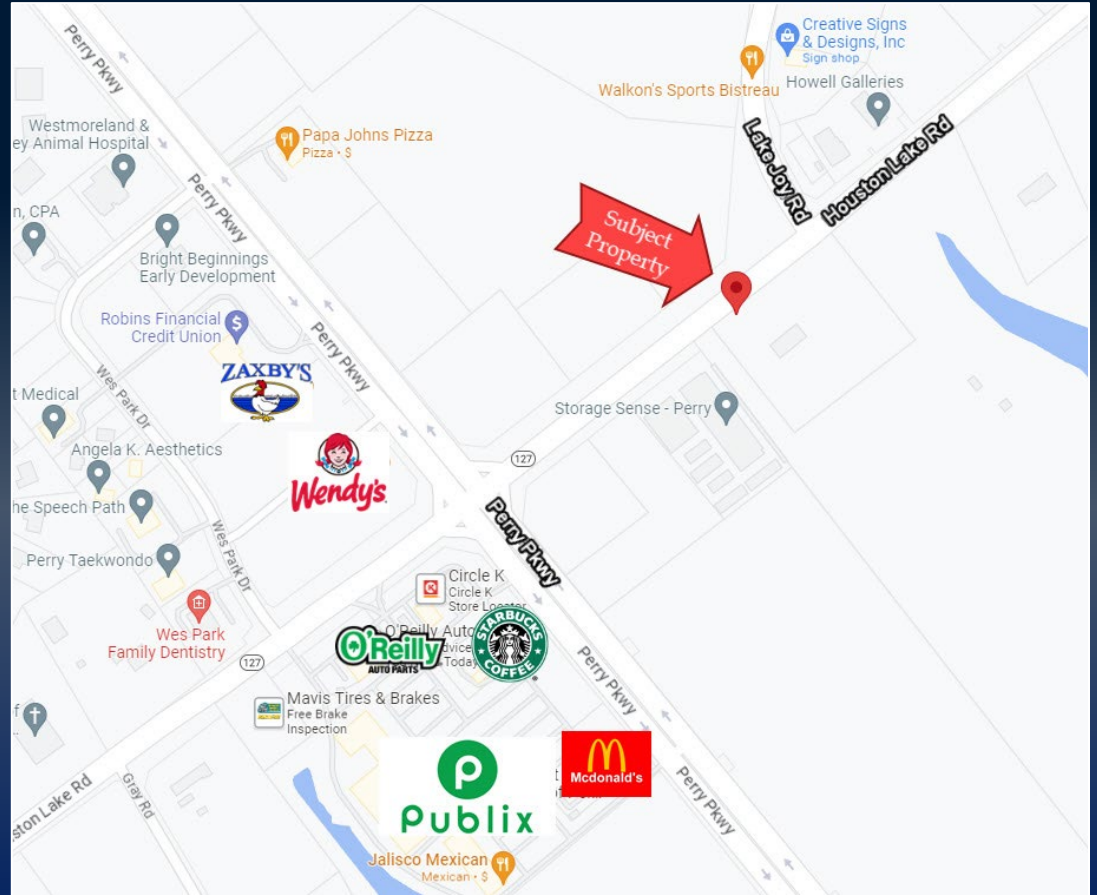


**KEVIN HARKINS C: 478.338.0623**  
KHARKINS@THESUMMITGROUPMACON.COM  
4124 ARKWRIGHT ROAD, SUITE 1, MACON, GA 31210  
**O: 478.750.7507**  
WWW.THESUMMITGROUPMACON.COM



## PROPERTY INFORMATION

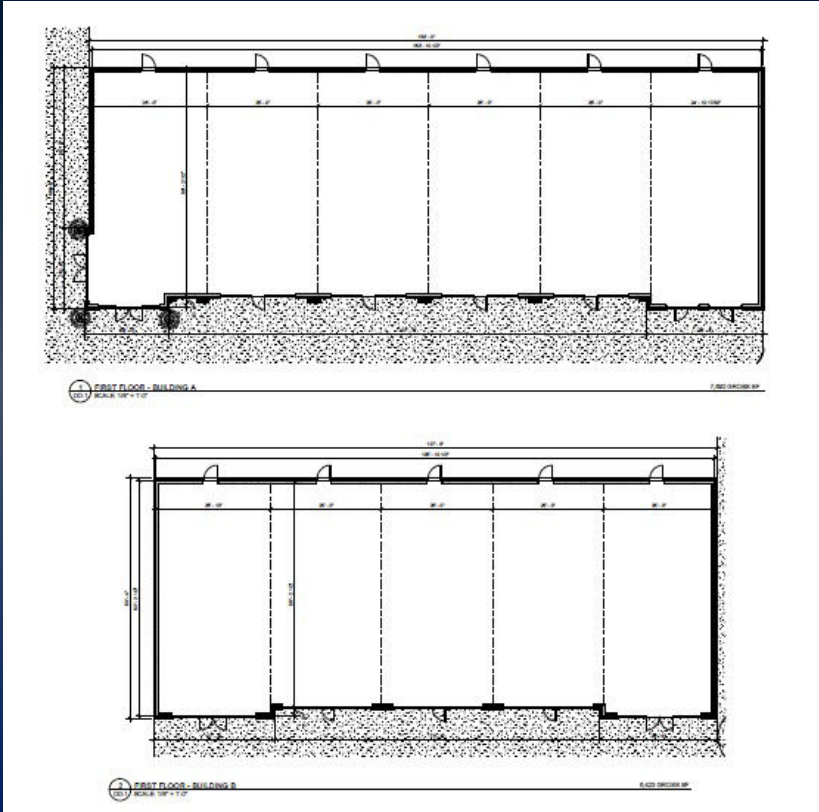
- ± 14,000 SF Lifestyle Retail Center
- Coming Summer 2024
- Minimum 1,250 SF per unit
- Located at the signalized intersection of Houston Lake Road & Lake Joy Road
  - Positioned at the entrance of a new ± 280-unit residential development
- Just down from Publix and the Paradise Shoppes of Perry



1904 HOUSTON LAKE ROAD, PERRY, GA 31069



# FLOOR PLAN & ZONING PLAN



1904 HOUSTON LAKE ROAD, PERRY, GA 31069

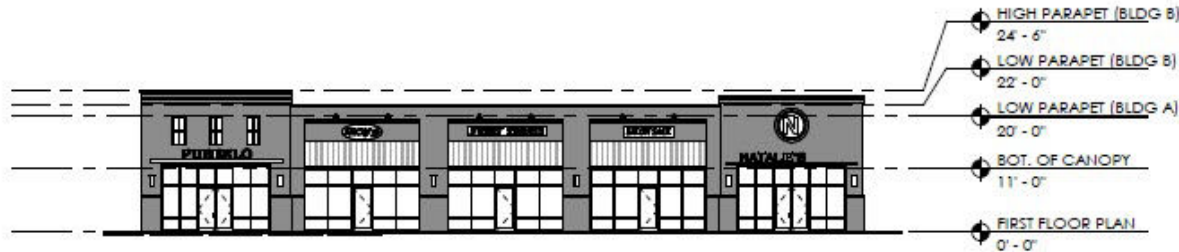




# ELEVATIONS



1 DD- FRONT ELEVATION  
A3.0 SCALE: 1/16" = 1'-0"



2 DD- FRONT ELEVATION Copy 1  
A3.0 SCALE: 1/16" = 1'-0"

*The information contained herein has been compiled from various sources, both private and public. It is accurate and complete only to the extent to which The Summit Group has been able to ascertain from third party sources. As such, no warranty or guarantee is given or implied with regard to the accuracy or completeness of any information contained herein. Any interested party shall be required to conduct its own due diligence and investigations to verify, review, audit, or otherwise ensure the information contained herein.*