

THE ENCORE AT THE PARKWAY

1904 HOUSTON LAKE ROAD, BLDG D, PERRY, GA 31069



ONLY 2 SPACES AVAILABLE - LEASE RATE: \$32/SF, NNN



KEVIN HARKINS C: 478.338.0623

KHARKINS@THESUMMITGROUPMACON.COM

4124 ARKWRIGHT ROAD, SUITE 1, MACON, GA 31210

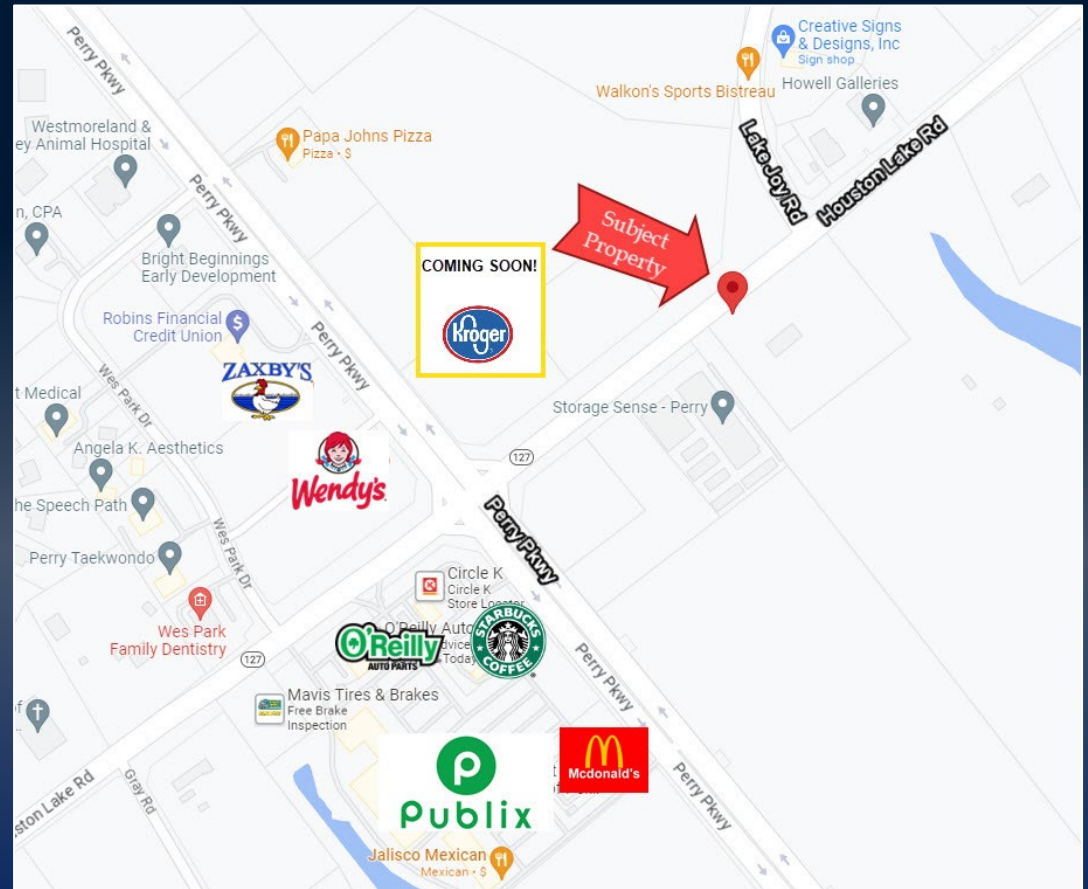
O: 478.750.7507

WWW.THESUMMITGROUPMACON.COM



PROPERTY INFORMATION

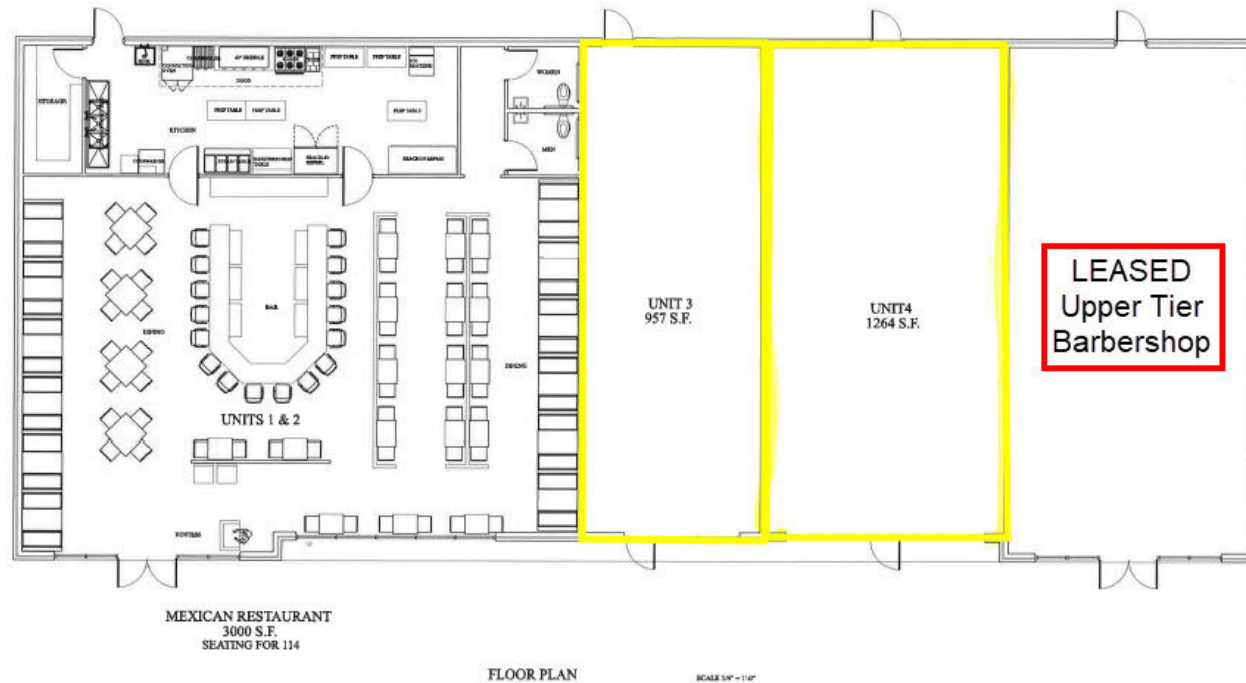
- Building D:
 - ±6,400 SF total building size
- ±957 - ±1,264 SF available; Can be combined into ±2,221 SF
- Located at the signalized intersection of Houston Lake Road & Lake Joy Road
- Positioned at the entrance of the Encore, a new ±280-unit live-and-play community conveniently located near Publix and the Paradise Shoppes of Perry
- Adjacent Bldg C is fully leased
- Traffic Count (GDOT 2023):
 - Houston Lake Road – 13,400 VPD
 - Perry Parkway – 12,500 VPD



1904 HOUSTON LAKE ROAD, BLDG D
PERRY, GA 31069
HOUSTON COUNTY



SITE PLAN



1904 HOUSTON LAKE ROAD, BLDG D
PERRY, GA 31069
HOUSTON COUNTY



ELEVATIONS



1 DD- FRONT ELEVATION
A3.0 SCALE: 1/16" = 1'-0"



2 DD- FRONT ELEVATION Copy 1
A3.0 SCALE: 1/16" = 1'-0"

The information contained herein has been compiled from various sources, both private and public. It is accurate and complete only to the extent to which The Summit Group has been able to ascertain from third party sources. As such, no warranty or guarantee is given or implied with regard to the accuracy or completeness of any information contained herein. Any interested party shall be required to conduct its own due diligence and investigations to verify, review, audit, or otherwise ensure the information contained herein.