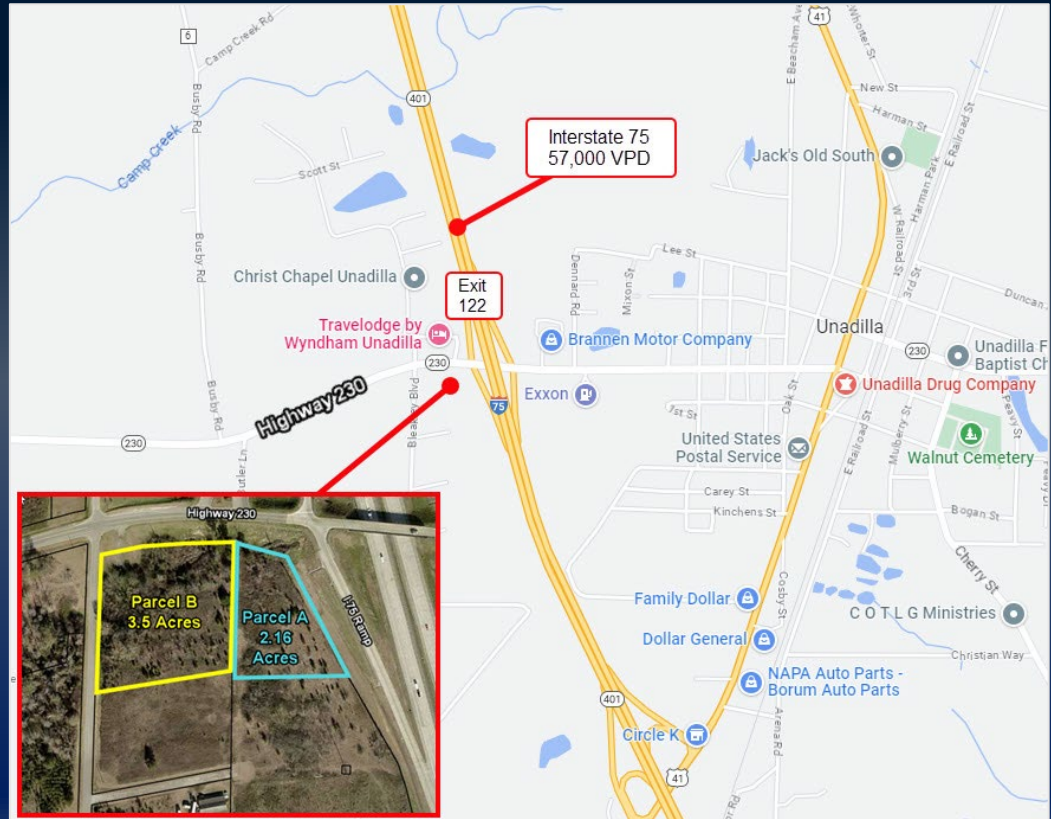


TWO PARCELS TOTALING 5.66 ACRES

HIGHWAY 230, UNADILLA, GA 31091, DOOLY COUNTY

- Parcel A – 2.16 Acres
 - Located on the SW corner of the I-75 ramp (Exit 122)
- Parcel B – 3.50 Acres
 - Located at the corner of Highway 230 & Bleakley Road
 - Adjacent to Parcel A
- Both parcels zoned C-2 (Central Business District)
- Water, sewer & natural gas available to both sites

Contact agent for pricing



DEREK FOSTER C: 478.997.1024

DFOSTER@THESUMMITGROUPMACON.COM

4124 ARKWRIGHT ROAD, SUITE 1 MACON, GA 31210

O: 478.750.7507

WWW.THESUMMITGROUPMACON.COM

