

DODGE COUNTY ACREAGE FOR SALE

ORPHANS CEMETERY ROAD | N LAKES DRIVE, EASTMAN, GA 31023, DODGE COUNTY



ASKING PRICE: \$16,700 PER ACRE



DEREK FOSTER C: 478.997.1024

DFOSTER@THESUMMITGROUPMACON.COM

4124 ARKWRIGHT ROAD, SUITE 1 MACON, GA 31210

O: 478.750.7507

WWW.THESUMMITGROUPMACON.COM



PROPERTY INFORMATION

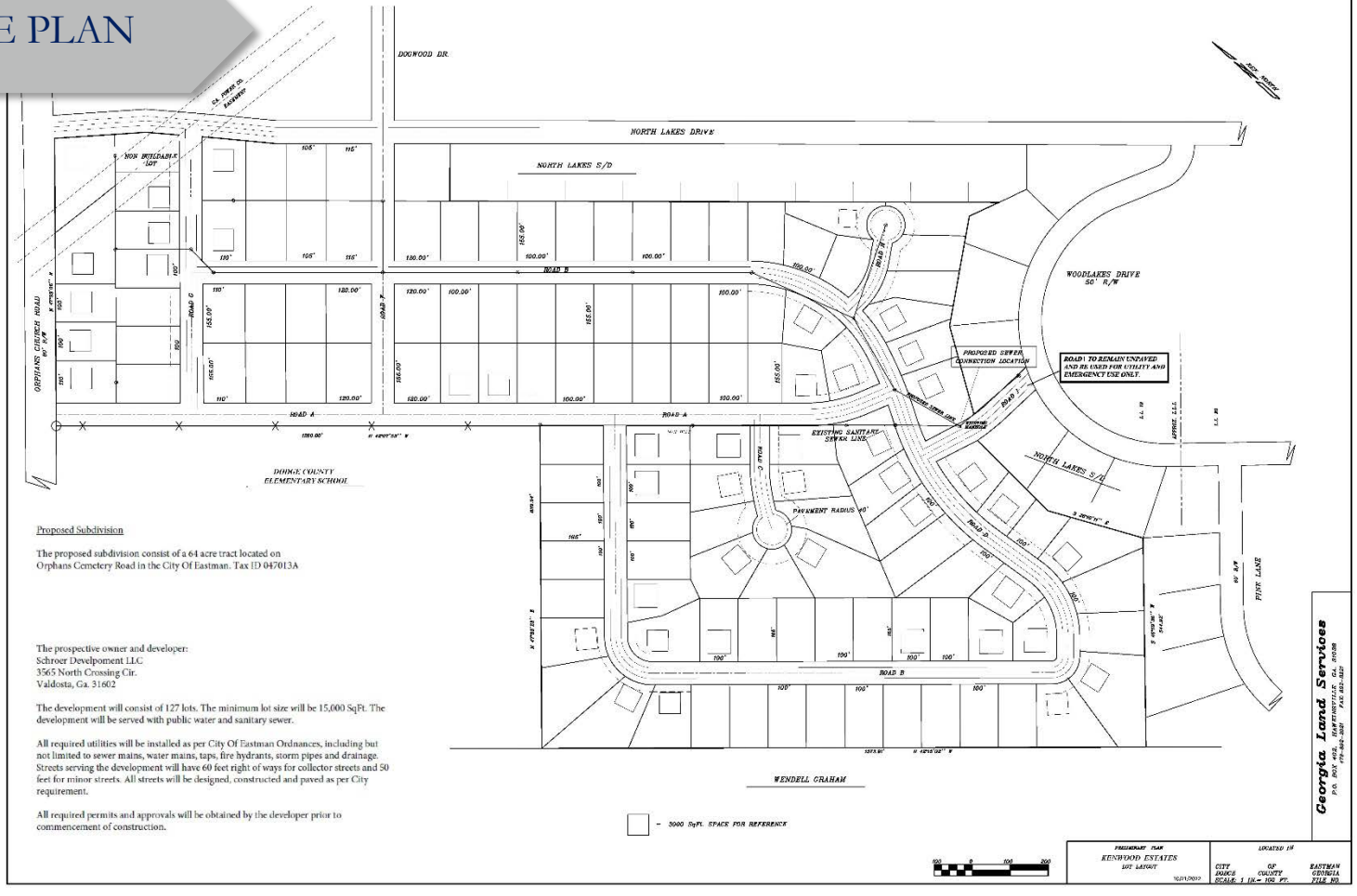
- ± 65 Total Acres
- Located .5 mile from Cochran Highway, adjacent to Dodge Elementary School
- Land acreage is cleared and level
- Water, sewer & power to site
- Engineering site plan available



ORPHANS CEMETERY ROAD & N. LAKES DRIVE
EASTMAN, GA 31023



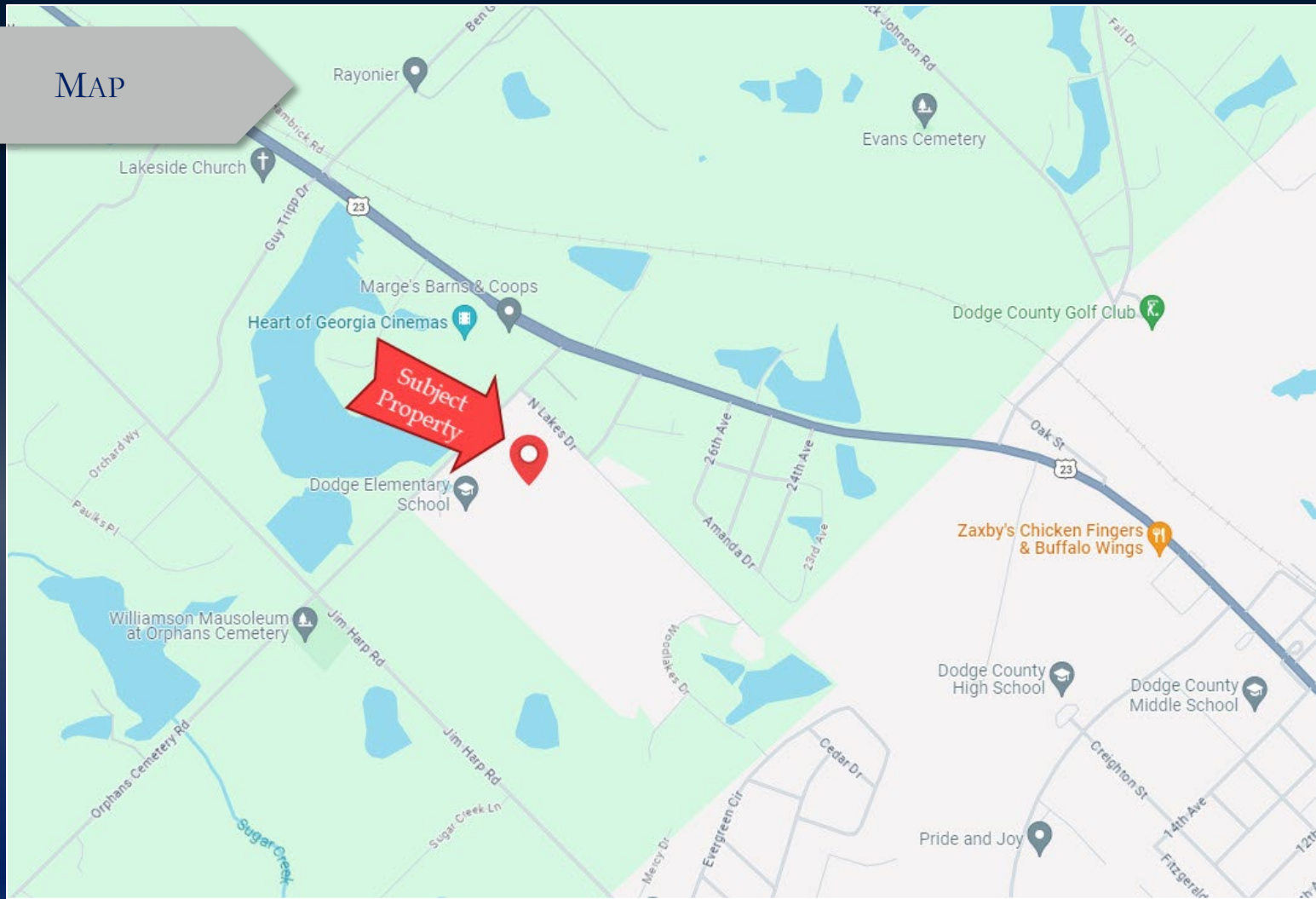
SITE PLAN



ORPHANS CEMETERY ROAD & N. LAKES DRIVE EASTMAN, GA 31023



MAP



The information contained herein has been compiled from various sources, both private and public. It is accurate and complete only to the extent to which The Summit Group has been able to ascertain from third party sources. As such, no warranty or guarantee is given or implied with regard to the accuracy or completeness of any information contained herein. Any interested party shall be required to conduct its own due diligence and investigations to verify, review, audit, or otherwise insure the information contained herein.