

THE CHALET LOFTS

1013 NORTHSIDE DRIVE PERRY, GA 31096 HOUSTON COUNTY



LEASE RATE \$ 29/SF | NNN



KEVIN HARKINS C: 478.338.0623
KHARKINS@THESUMMITGROUPMACON.COM
4124 ARKWRIGHT ROAD, SUITE 1, MACON, GA 31210
O: 478.750.7507
WWW.THESUMMITGROUPMACON.COM



SITE PLAN

Suite 1: Leased

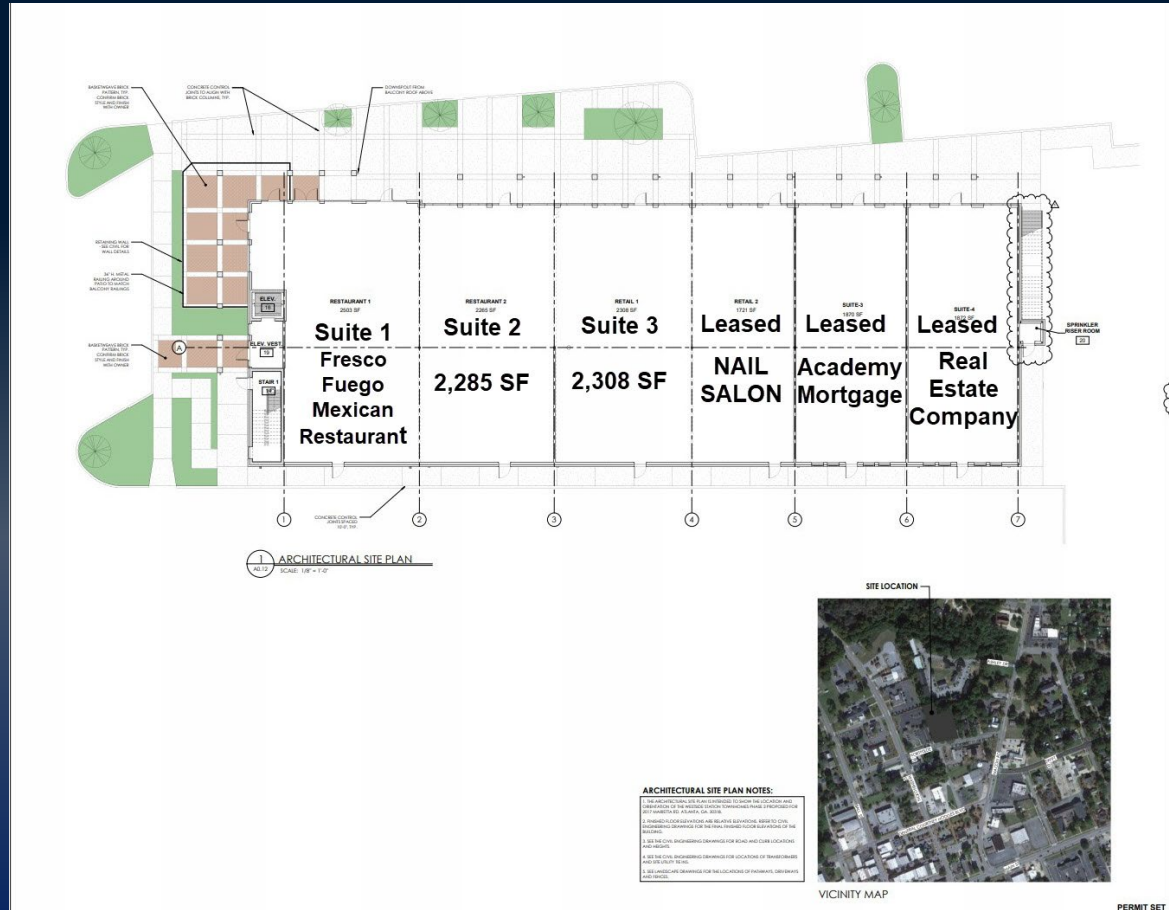
Suite 2: 2,285 SF
 • Rent - \$29/SF + NNN

Suite 3: 2,308 SF
 • Rent - \$29/ SF + NNN

• Suite 4: Leased

• Suite 5: Leased

• Suite 6: Leased



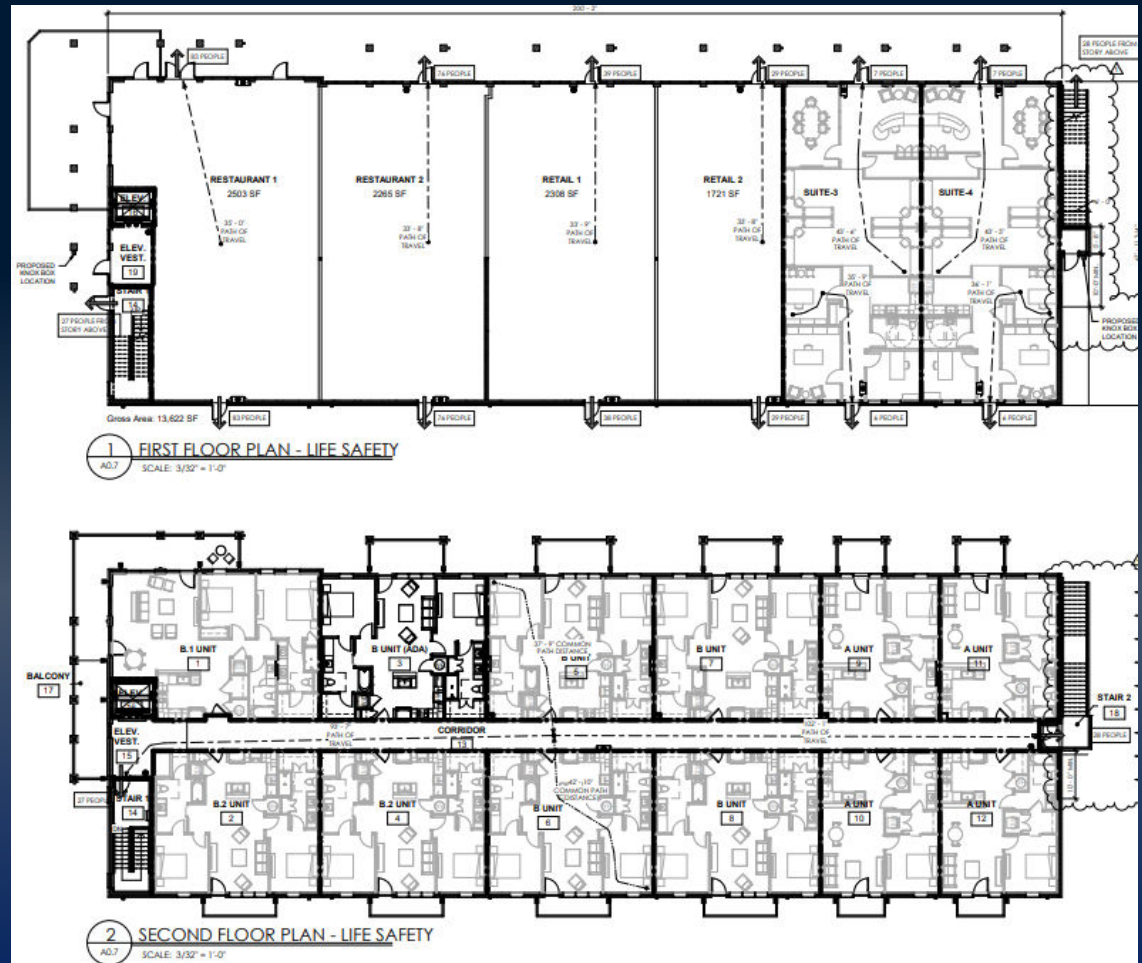
1013 NORTHSIDE DRIVE PERRY, GA 31096



The information contained herein has been compiled from various sources, both private and public. It is accurate and complete only to the extent to which The Summit Group has been able to ascertain from third party sources. As such, no warranty or guarantee is given or implied with regard to the accuracy or completeness of any information contained herein. Any interested party shall be required to conduct its own due diligence and investigations to verify, review, audit, or otherwise insure the information contained herein.

PROPERTY INFORMATION

- New construction in an Excellent location in the heart of Downtown Perry
- Zoned C-3
- Retail/ Office space available
- 2,285-4,593 SF available
- 12 loft apartments above



1013 NORTHSIDE DRIVE PERRY, GA 31096

