

# ± .5 ACRE OUT PARCEL FOR SALE

1113 HIGHWAY 96, KATHLEEN, GA 31047



**CALL AGENT FOR PRICING**



ALLIE GRAMBLING C: 478.955.8333

AGRAMBLING@THESUMMITGROUPMACON.COM

4124 ARKWRIGHT ROAD, SUITE 1, MACON, GA 31210

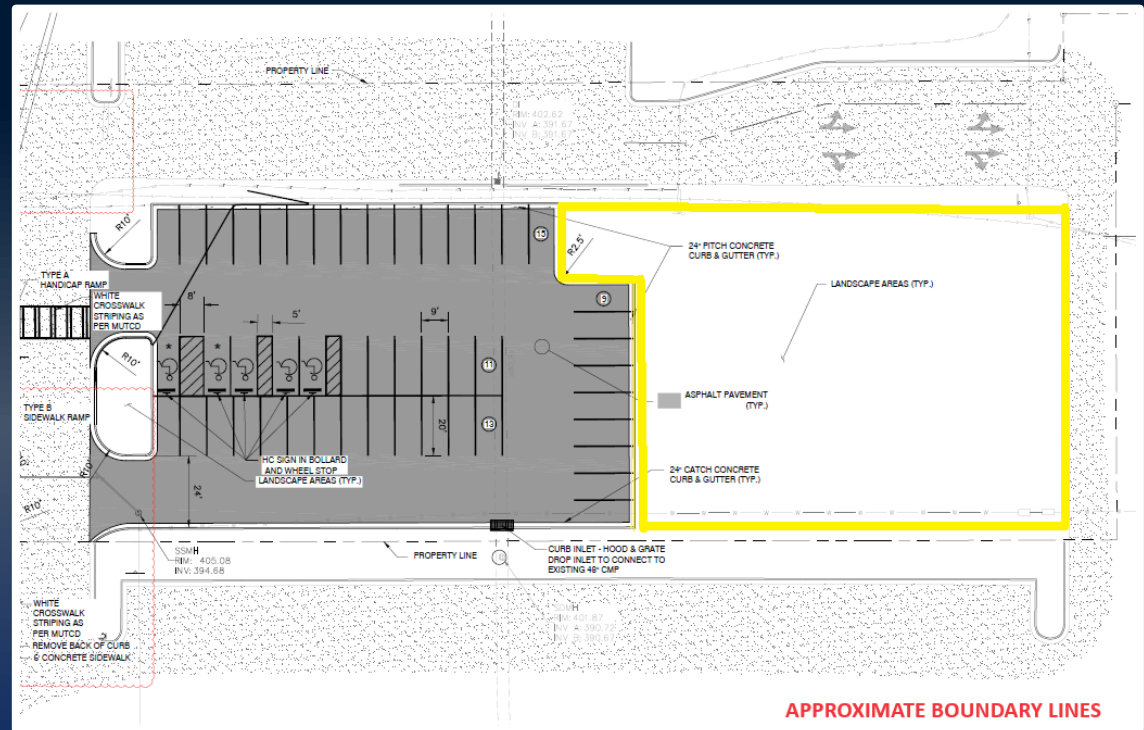
O: 478.750.7507

WWW.THESUMMITGROUPMACON.COM



## PROPERTY INFORMATION

- Woodland's Coffee Roasters Out Parcel
- Located in the Lake Joy Pavilion Anchored by Lowe's Home Improvement Store
- Zoned C-2
- All utilities available
- Excellent, high traffic area with other businesses including Wells Fargo, Dairy Queen, Walgreens, Mellow Mushroom, O'Reilly Auto Parts & more



1113 HIGHWAY 96  
KATHLEEN, GA 31047  
HOUSTON COUNTY



## TRAFFIC & DEMOGRAPHICS

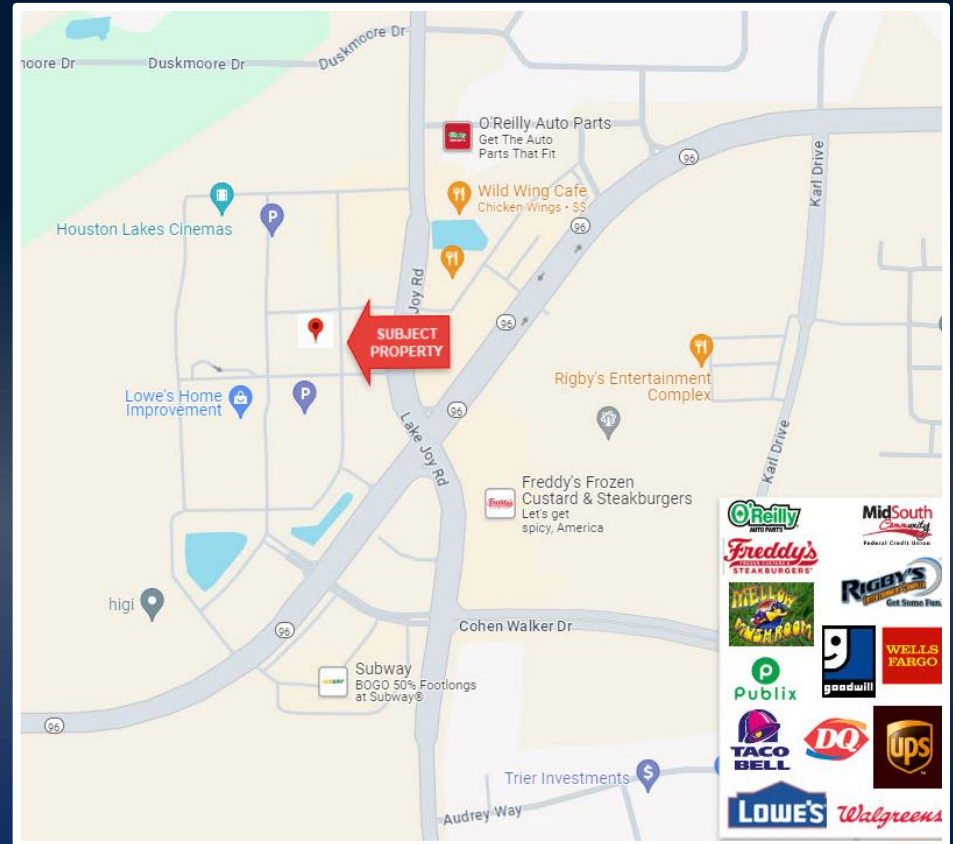
### TRAFFIC COUNTS (GDOT 2023 Published Date Estimate)

LAKE JOY ROAD – 16,900 VPD

HIGHWAY 96- 18,600 VPD

### DEMOGRAPHICS:

	<u>1 Mile</u>	<u>3 Miles</u>	<u>5 Miles</u>
2023 Population:			
4,140	42,049	84,882	
2028 Population Estimate:			
4,407	43,919	88,599	
2023 Households:			
1,520	15,198	32,472	
2028 Households Estimate:			
1,632	16,071	34,228	
2023 Average HH Income:			
\$142,775	\$126,032	\$108,007	
2028 Average HH Income Estimate:			
\$159,464	\$142,373	\$122,881	



**1113 HIGHWAY 96**  
**KATHLEEN, GA 31047**  
**HOUSTON COUNTY**



*The information contained herein has been compiled from various sources, both private and public. It is accurate and complete only to the extent to which The Summit Group has been able to ascertain from third party sources. As such, no warranty or guarantee is given or implied with regard to the accuracy or completeness of any information contained herein. Any interested party shall be required to conduct its own due diligence and investigations to verify, review, audit, or otherwise insure the information contained herein.*