

LEASE SPACES AVAILABLE

5005 RIVERSIDE DRIVE
MACON, GEORGIA 31210
BIBB COUNTY

2 SUITES
3,080 SF TOTAL

LEASE RATE:
\$28/SF
NNN



ADAM BAILEY C: 478.733.7961
ABAILEY@THESUMMITGROUPMACON.COM
4124 ARKWRIGHT ROAD, SUITE 1 MACON, GA 31210
O: 478.750.7507
WWW.THESUMMITGROUPMACON.COM



PROPERTY INFORMATION

- 2 Suites available
 - Suite D: ± 1,840 SF
 - Suite C: ± 1,240 SF
- (Can be combined)
- Zoned C-2 (commercial)
- Two restrooms in each suite
- Neighboring tenants include Jersey Mikes, Aspen Dental, Cox Communications, Hobby Lobby, Mattress Firm & The Vitamin Shoppe
- Excellent high traffic location at the signalized intersection of Riverside Drive and Gateway Drive across from The Shoppes at River Crossing
- Easy access from Interstate 75 (Exits 171 and 172)



5005 RIVERSIDE DRIVE MACON, GEORGIA 31210
BIBB COUNTY



TRAFFIC COUNTS & DEMOGRAPHICS

TRAFFIC COUNTS: (GDOT 2022 Published Data estimate)

Riverside Drive @ Gateway Drive – 15,000 vpd

I-75 N of Exit 171 – 52,400 vpd

I-75 S of Exit 171 – 47,600 vpd

DEMOGRAPHICS

5 Miles

2024 Population: 42,046

2029 Population Estimate: 41,743

2024 Households: 17,767

2029 Households Estimate: 18,185

2024 Average HH Income: \$118,786

2029 Average HH Income Estimate: \$140,866

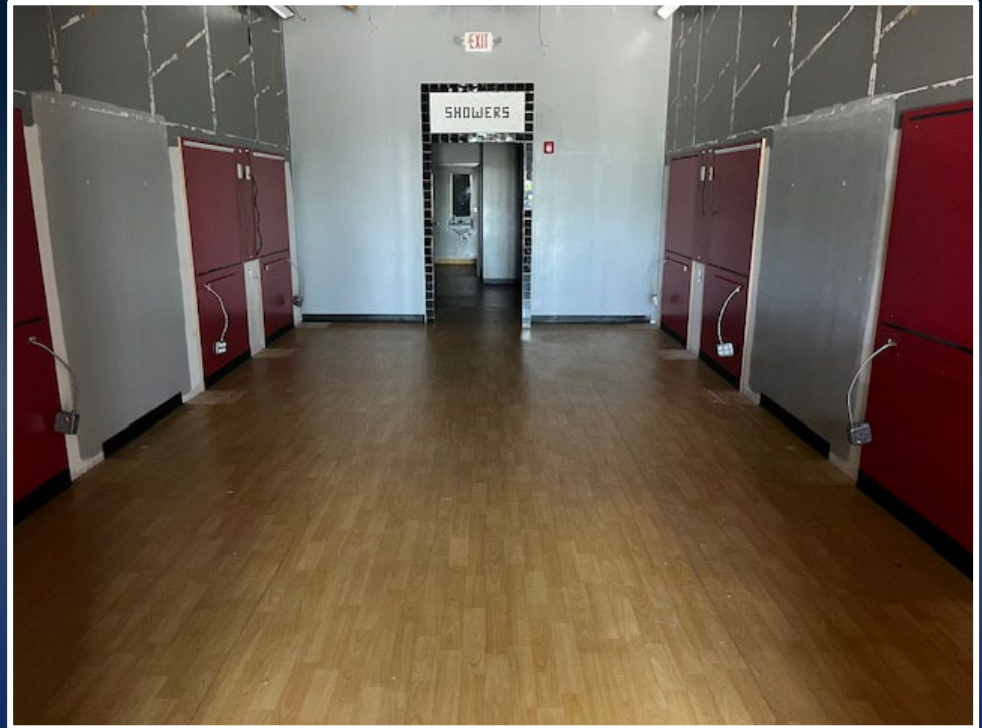
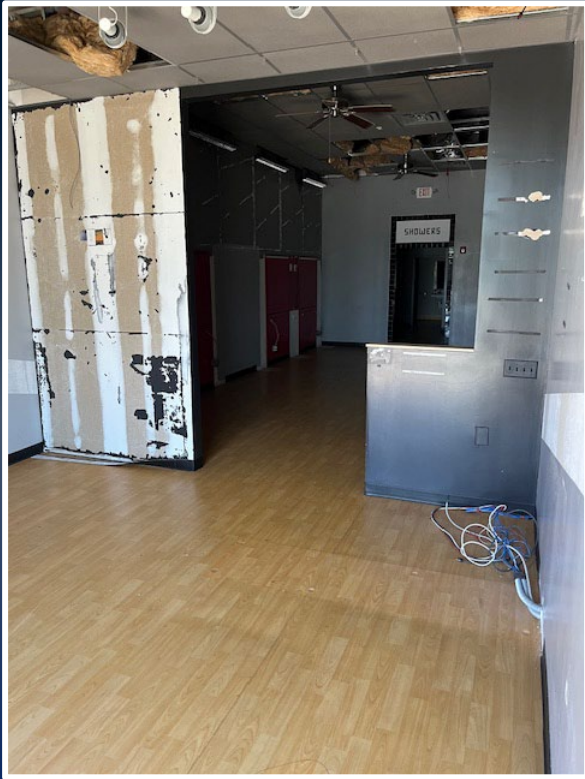
SUITE D



5005 RIVERSIDE DRIVE MACON, GEORGIA 31210
BIBB COUNTY



PHOTOS
SUITE C



5005 RIVERSIDE DRIVE MACON, GEORGIA 31210
BIBB COUNTY

