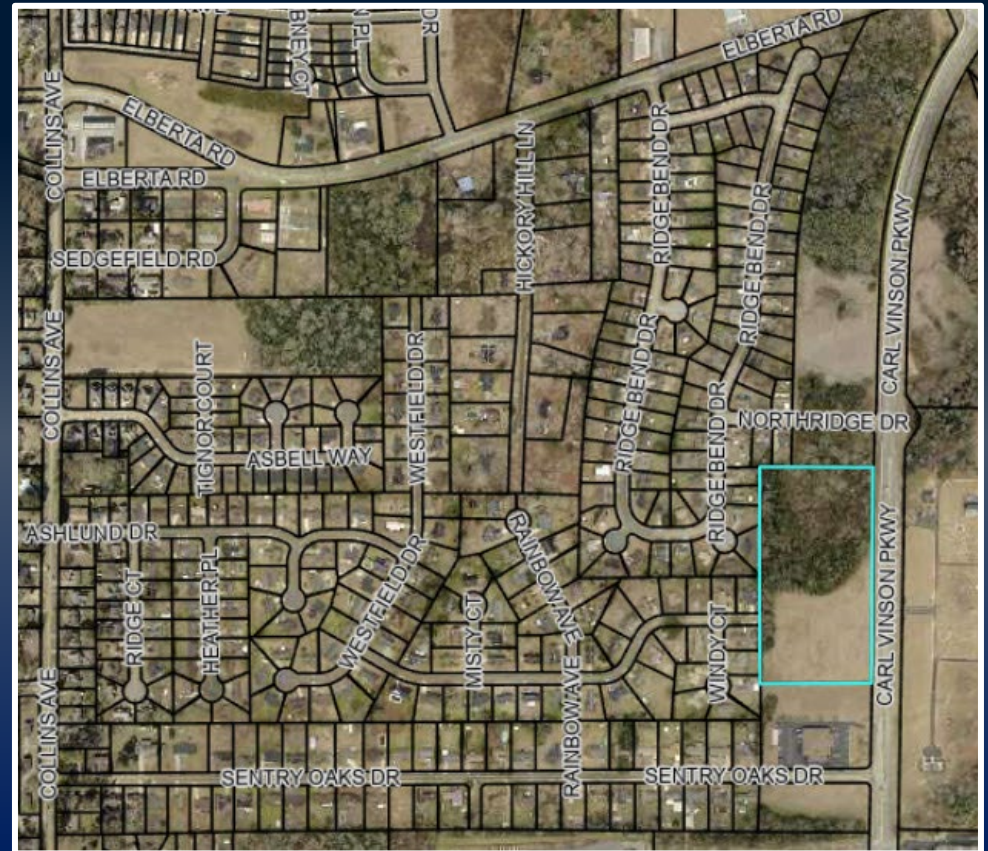


COMMERCIAL LAND FOR SALE

CARL VINSON PARKWAY @
NORTHSIDE DRIVE, WARNER
ROBINS, GEORGIA 31088

9.11 ACRES

ASKING PRICE:
\$65,000/PER ACRE



DEREK FOSTER C: 478.997.1024

DFOSTER@THESUMMITGROUPMACON.COM

4124 ARKWRIGHT ROAD, SUITE 1 MACON, GA 31210

O: 478.750.7507

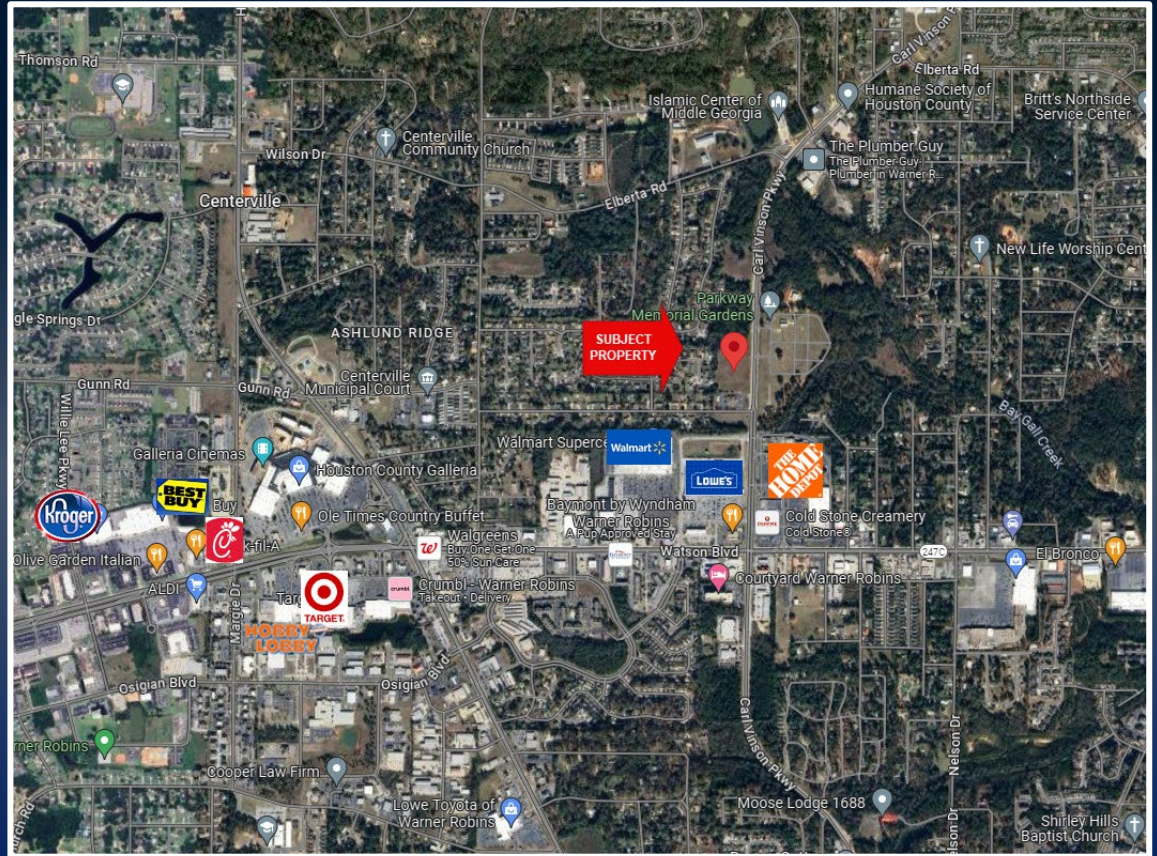
WWW.THESUMMITGROUPMACON.COM



PROPERTY INFORMATION

- 9.11 Acres
- Zoned C2
- Sewer, water & utilities available to site
- Mostly level topography
- 875 feet of frontage on Carl Vinson & 447 feet deep
- Conveniently located on Carl Vinson Parkway North of Watson Boulevard intersection between Watson Boulevard & Elberta Road
- Convenient to restaurants & retailers including Lowes, Walmart, Cracker Barrell & Longhorn Steak House
- Traffic Counts

Carl Vinson Parkway: 11,700 VPD
Watson Boulevard: 34,200 VPD



**CARL VINSON PARKWAY @
NORTHSIDE DRIVE, WARNER
ROBINS, GEORGIA 31088**



The information contained herein has been compiled from various sources, both private and public. It is accurate and complete only to the extent to which The Summit Group has been able to ascertain from third party sources. As such, no warranty or guarantee is given or implied with regard to the accuracy or completeness of any information contained herein. Any interested party shall be required to conduct its own due diligence and investigations to verify, review, audit, or otherwise insure the information contained herein.