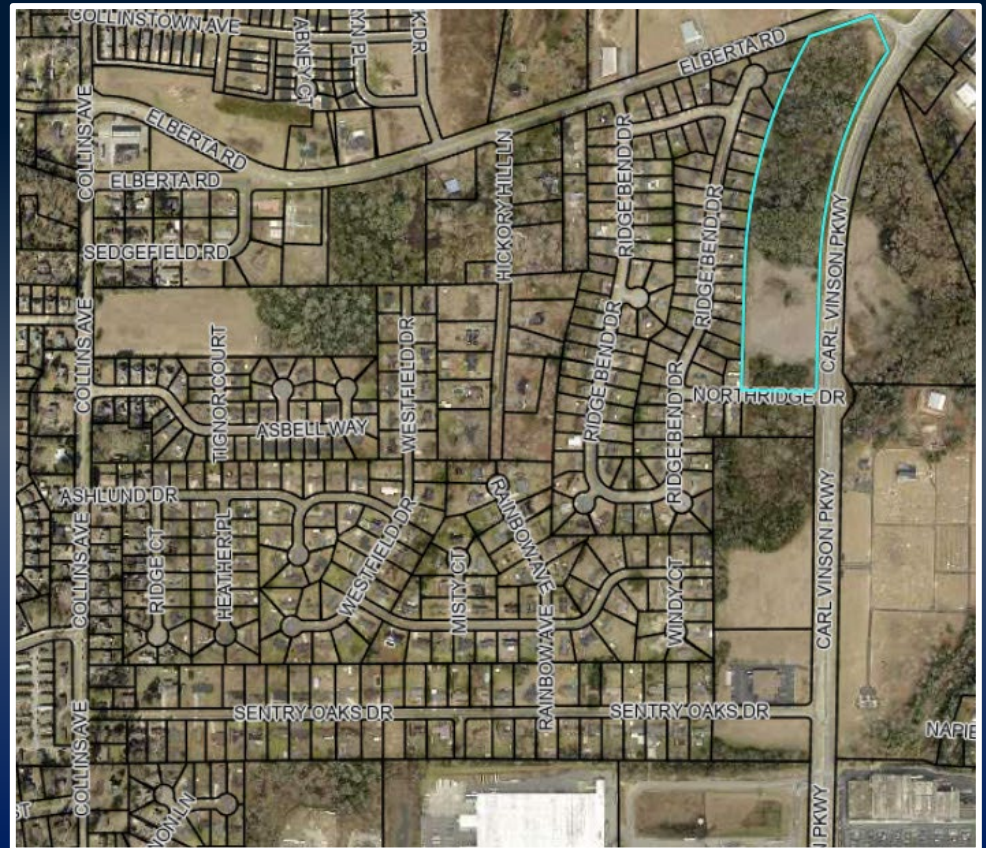


COMMERCIAL LAND FOR SALE

**CARL VINSON PARKWAY @
NORTHSIDE DRIVE AND
ELBERTA ROAD,
WARNER ROBINS, GEORGIA
31088**

12.43 ACRES

**ASKING PRICE:
\$65,000/PER ACRE**



DEREK FOSTER C: 478.997.1024

DFOSTER@THESUMMITGROUPMACON.COM

4124 ARKRIGHT ROAD, SUITE 1 MACON, GA 31210

O: 478.750.7507

WWW.THESUMMITGROUPMACON.COM

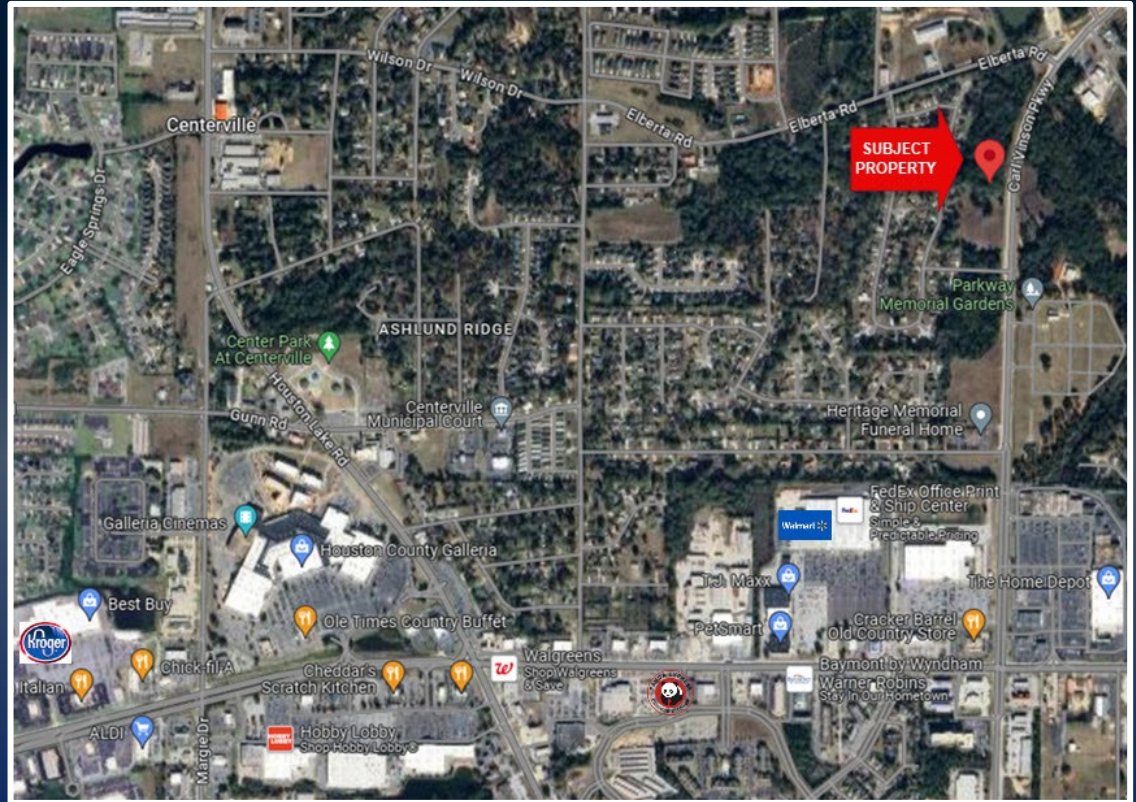


PROPERTY INFORMATION

- 12.49 Acres
- Zoned C2
- Sewer, water & utilities available to site
- 1,725 feet of frontage on Carl Vinson & 358 feet deep
- Mostly level topography
- Conveniently located on Carl Vinson Parkway North of Watson Boulevard intersection between Watson Boulevard & Elberta Road
- Convenient to restaurants & retailers including Lowes, Walmart, Cracker Barrel & Longhorn Steak House
- Traffic Counts

Carl Vinson Parkway: 11,700 VPD

Watson Boulevard: 34,200 VPD



**CARL VINSON PARKWAY @ NORTHSIDE
DRIVE AND ELBERTA ROAD,
WARNER ROBINS, GEORGIA 31088**

