

SINGLE OFFICE UNITS FOR LEASE

329 MARGIE DRIVE
WARNER ROBINS, GA 31088
HOUSTON COUNTY

ONE SPACE AVAILABLE!
0.16 AC

**FULL-SERVICE RATES
STARTING AT \$575/MO
(SEE ATTACHED FLOOR PLAN
FOR AVAILABILITY)**



KEVIN HARKINS C: 478.338.0623
KHARKINS@THESUMMITGROUPMACON.COM
4124 ARKWRIGHT ROAD, SUITE 1, MACON, GA 31210
O: 478.750.7507
WWW.THESUMMITGROUPMACON.COM



PROPERTY INFORMATION

- Total building size - $\pm 3,000$ SF
- Lot size - 0.16 ac
- Built 2003
- Two (2) monument signs
- Zoned C-2 (Commercial)
- Building features hardwood flooring throughout with spacious individual offices
- Full-service lease rates include utilities, WiFi, and janitorial in common areas
- Excellent high traffic location off Watson Boulevard
- Ideal for professional users including attorneys, medical practice, CPA, architect, insurance company, and more



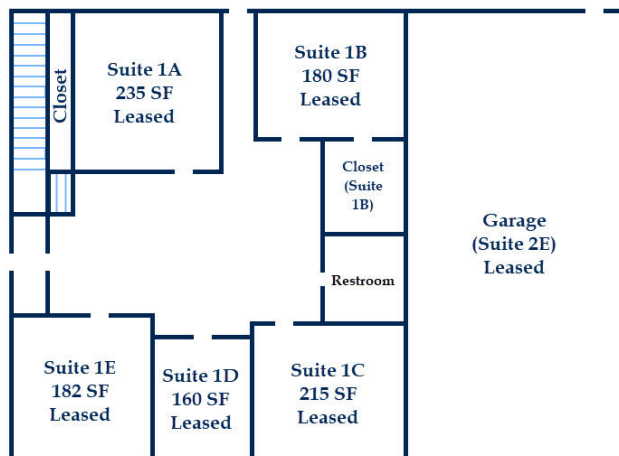
329 MARGIE DRIVE, WARNER ROBINS, GA 31088



FLOOR PLANS

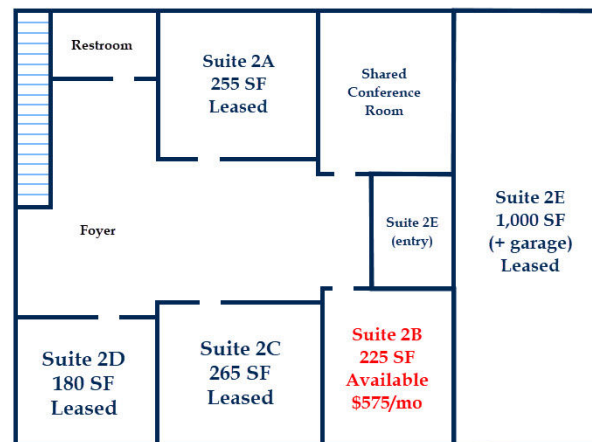
329 Margie Drive

1st Floor Plan (not to scale)



329 Margie Drive

2nd Floor Plan (not to scale)



329 MARGIE DRIVE, WARNER ROBINS, GA 31088



The information contained herein has been compiled from various sources, both private and public. It is accurate and complete only to the extent to which The Summit Group has been able to ascertain from third party sources. As such, no warranty or guarantee is given or implied with regard to the accuracy or completeness of any information contained herein. Any interested party shall be required to conduct its own due diligence and investigations to verify, review, audit, or otherwise insure the information contained herein.