

# DEVELOPMENT LAND FOR SALE

Housers Mill Road @ Sledge Road  
Byron Ga,  
Peach County 31008

- 9.5 Acres
- Housers Mill Road just off the 247 Connector (Watson Boulevard) I-75 Warner Robins exit 146 available from I-75
- Located next to the Shree Swaminarayan Hindu temple
- Zoned: R-AG
- VPD (GDOT) I-75: 83,800 VPD



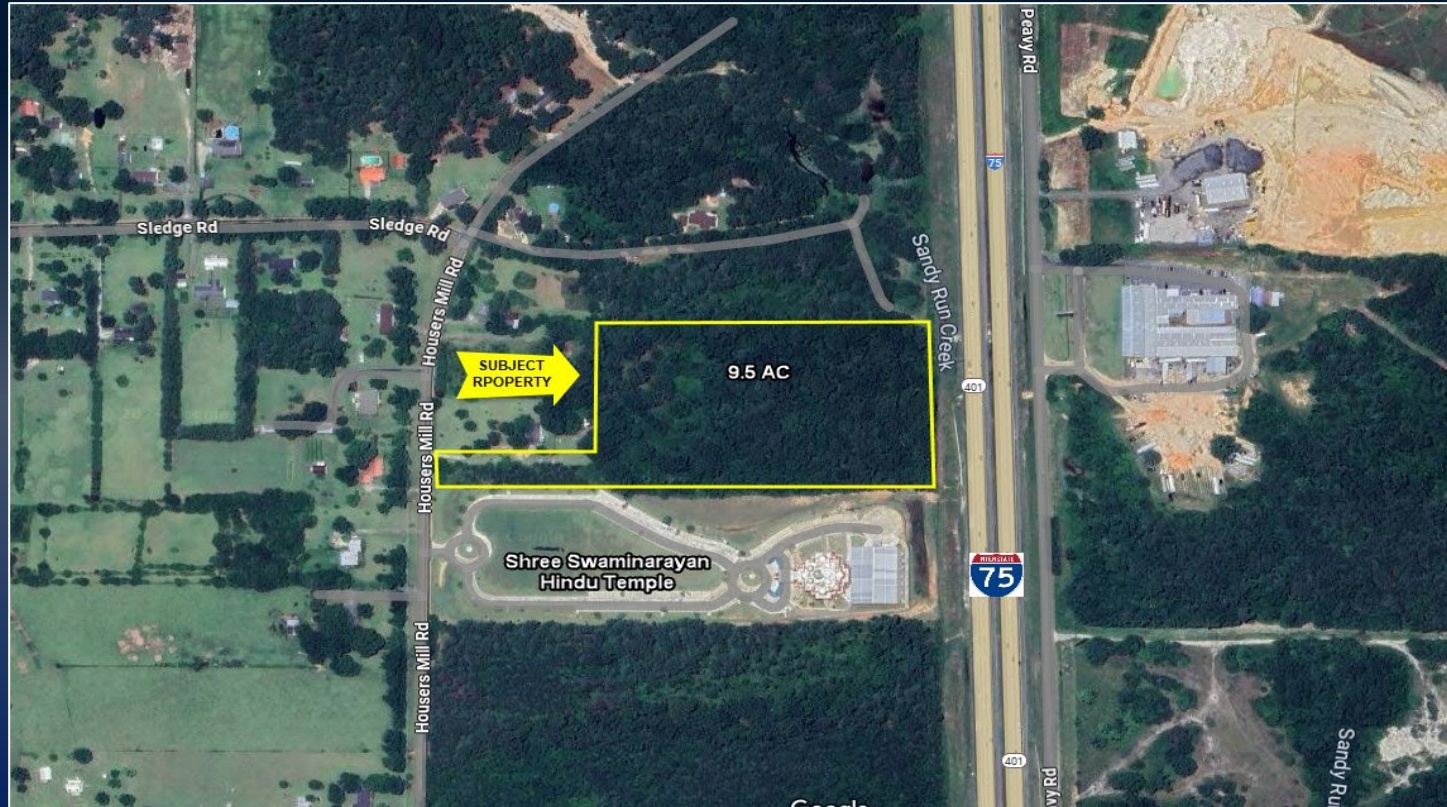
Asking Price: \$25,000/AC



**DEREK FOSTER C: 478.997.1024**  
DFOSTER@THESUMMITGROUPMACON.COM  
4124 ARKWRIGHT ROAD, SUITE 1 MACON, GA 31210  
**O: 478.750.7507**  
WWW.THESUMMITGROUPMACON.COM



AERIAL



Housers Mill Road @ Sledge Road (9.50 AC)  
Byron GA, Peach County 31008

