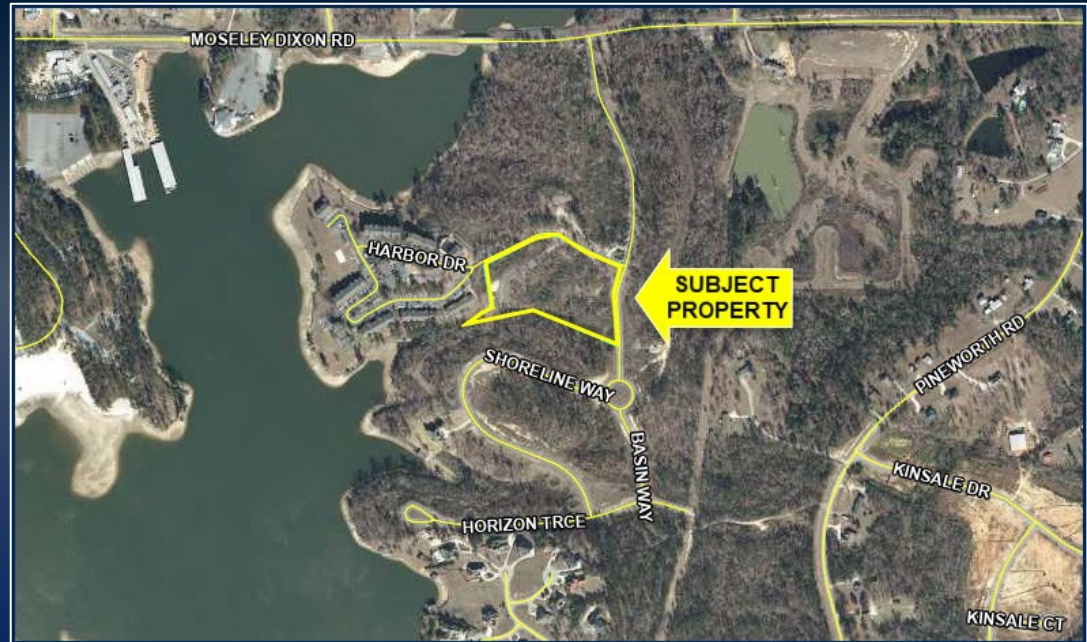




LAND FOR SALE

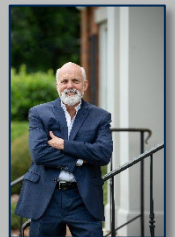
200 GREAT WATERS LANE
LIZELLA, GA 31052
BIBB COUNTY

\$145,000



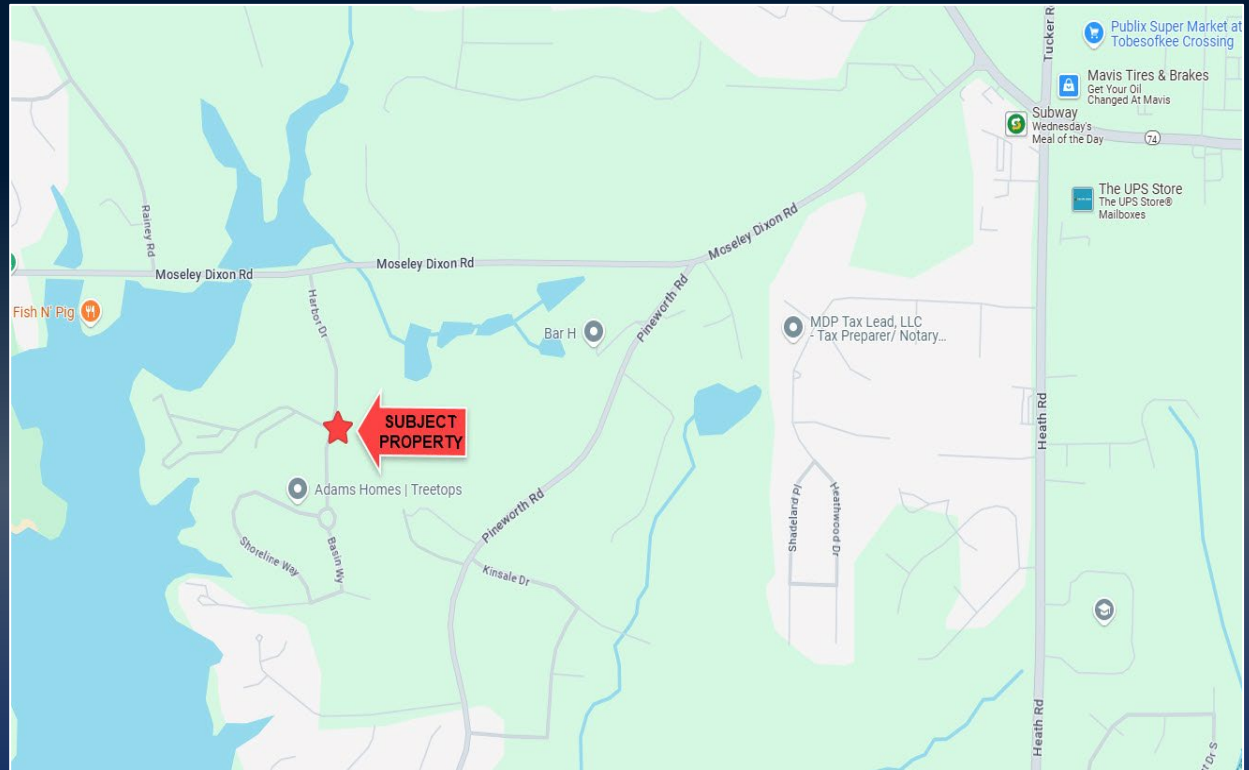
ADAM BAILEY C: 478.733.7961 | STERLING BAILEY C: 478.951.9443
ABAILEY@THESUMMITGROUPMACON.COM | SBAILEY@THESUMMITGROUPMACON.COM
4124 ARKWRIGHT ROAD, SUITE 1, MACON, GA 31210
O: 478.750.7507

WWW.THESUMMITGROUPMACON.COM



PROPERTY INFORMATION

- ± 5.83 AC
- Zoned: PDR
- All Utilities to Site



200 GREAT WATERS LANE
LIZELLA, GA 31052
BIBB COUNTY



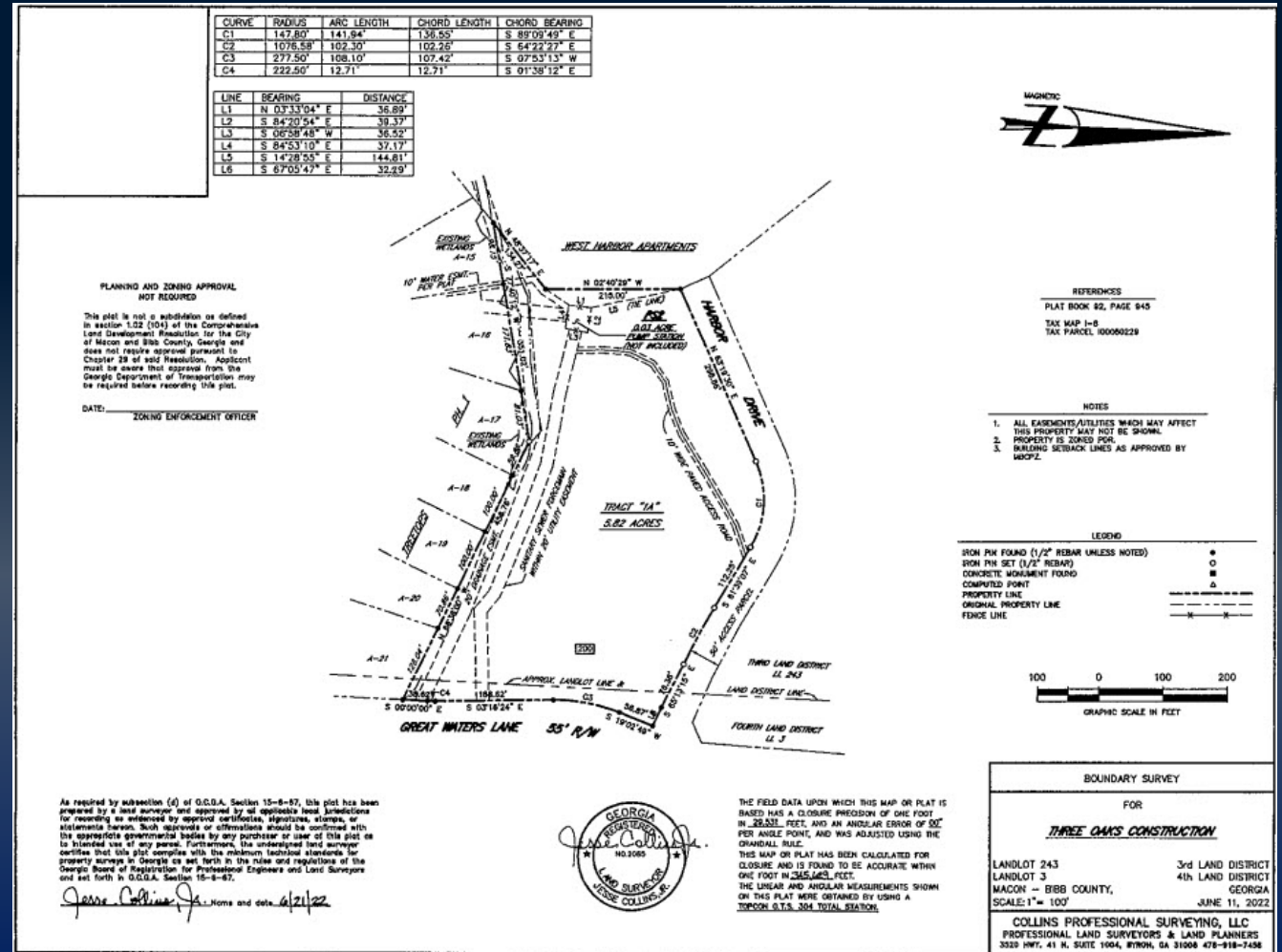
DEMOGRAPHICS

DEMOGRAPHICS	1 MILES	3 MILES	5 MILES
2024 Population	1,562	15,541	53,792
2029 population Estimate	1,551	15,215	52,856
2024 Households	704	6,203	20,785
2029 Households Estimate	713	6,175	20,724
2024 Average HH Income	\$111,781	\$90,460	\$85,806
2029 Average HH Income	\$132,008	\$109,751	\$104,410

200 GREAT WATERS LANE
LIZELLA, GA 31052
BIBB COUNTY



SURVEY



The information contained herein has been compiled from various sources, both private and public. It is accurate and complete only to the extent to which The Summit Group has been able to ascertain from third party sources. As such, no warranty or guarantee is given or implied with regard to the accuracy or completeness of any information contained herein. Any interested party shall be required to conduct its own due diligence and investigations to verify, review, audit, or otherwise insure the information contained herein.

