



# COMMERCIAL LOT

**BLOOMFIELD DRIVE EXTENSION  
MACON, GA 31206  
BIBB COUNTY**

**±4.75 AC**

**ASKING PRICE:  
\$149,000**



**ADAM BAILEY C: 478.733.7961 | ZACH EMERICK C: 478.972.7303**

[ABAILEY@THESUMMITGROUPMACON.COM](mailto:ABAILEY@THESUMMITGROUPMACON.COM) | [ZEMERICK@THESUMMITGROUPMACON.COM](mailto:ZEMERICK@THESUMMITGROUPMACON.COM)

**4124 ARKWRIGHT ROAD, SUITE 1, MACON, GA 31210**

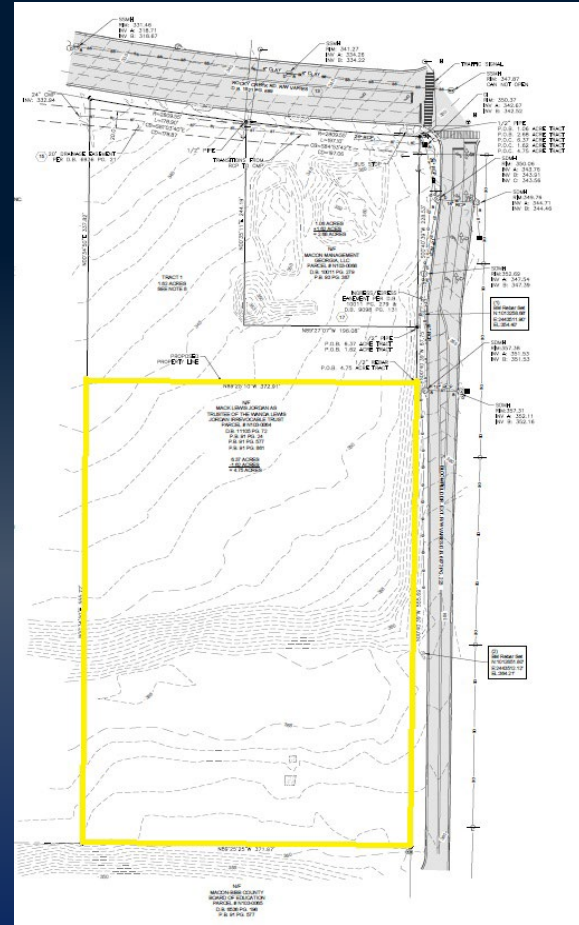
**O: 478.750.7507**

[WWW.THESUMMITGROUPMACON.COM](http://WWW.THESUMMITGROUPMACON.COM)



## PROPERTY INFORMATION

- ± 555 frontage feet on Bloomfield Drive Extension
- Water and sewer available
- Zoned C-1 (commercial)
- Located next to Southfield Elementary School near the intersection of Rocky Creek Road and Bloomfield Drive



**BLOOMFIELD DRIVE EXTENSION**  
**MACON, GA 31206**  
**BIBB COUNTY**





# MAP



*The information contained herein has been compiled from various sources, both private and public. It is accurate and complete only to the extent to which The Summit Group has been able to ascertain from third party sources. As such, no warranty or guarantee is given or implied with regard to the accuracy or completeness of any information contained herein. Any interested party shall be required to conduct its own due diligence and investigations to verify, review, audit, or otherwise insure the information contained herein.*

