



# CLASS A OFFICE SPACE FOR LEASE

6055 LAKESIDE COMMONS DRIVE, SUITE 440  
MACON, GA 31210 BIBB COUNTY

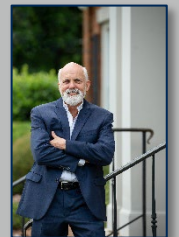


**LEASE RATE: \$21.00/SF, FULL SERVICE | ±1,896 SF**



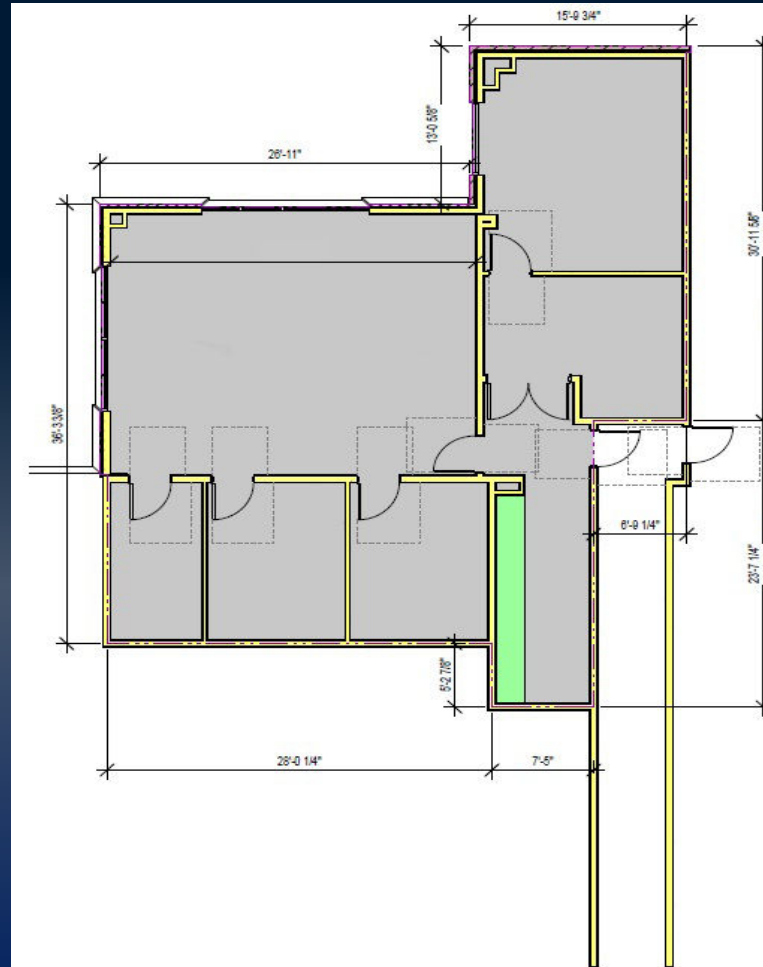
**ADAM BAILEY C: 478.733.7961 | STERLING BAILEY C: 478.951.9443**  
ABAILEY@THESUMMITGROUPMACON.COM | SBAILEY@THESUMMITGROUPMACON.COM  
4124 ARKWRIGHT ROAD, SUITE 1, MACON, GA 31210  
**O: 478.750.7507**

WWW.THESUMMITGROUPMACON.COM



## PROPERTY INFORMATION

- ±1,896 SF office space
- Features a lobby, three (3) private offices, a bullpen area, reception area, and storage/IT closet
- Ample on-site parking for employees and visitors
- Professional corporate environment surrounded by established businesses and office users
- Strong daily traffic counts provide excellent accessibility and visibility in a growing commercial corridor
- Located near retail, restaurants, hotels, and everyday conveniences along the Bass Road corridor



**6055 LAKESIDE COMMONS DRIVE**  
**SUITE 440**  
**MACON, GA 31210**  
**BIBB COUNTY**



## PROPERTY INFORMATION

- Current tenants include:
  - Morgan Stanley
  - Securian
  - KaMin
  - McArthur Law Firm
  - Dellacona Law Firm
  - Active Minerals
  - Department of Revenue
  - Lifestance
  - Pearson Vue
  - SCP Eyecare



6055 LAKESIDE COMMONS DRIVE  
SUITE 440  
MACON, GA 31210  
BIBB COUNTY



# AERIAL MAP



6055 LAKESIDE COMMONS DRIVE  
SUITE 440  
MACON, GA 31210  
BIBB COUNTY



## EXTERIOR PHOTO



*The information contained herein has been compiled from various sources, both private and public. It is accurate and complete only to the extent to which The Summit Group has been able to ascertain from third party sources. As such, no warranty or guarantee is given or implied with regard to the accuracy or completeness of any information contained herein. Any interested party shall be required to conduct its own due diligence and investigations to verify, review, audit, or otherwise insure the information contained herein.*

