



PAD-READY LOTS FOR SALE

WATSON BOULEVARD
BYRON, GA 31008
PEACH COUNTY

±1.15 - ±3.70 acre lots

ASKING PRICE:
\$925K-\$1.25M PER LOT



KEVIN HARKINS C: 478.338.0623 | KING KEMPER, CCIM C: 478.957.1920
KHARKINS@THESUMMITGROUPMACON.COM | KKEMPER@THESUMMITGROUPMACON.COM
4124 ARKWRIGHT ROAD, SUITE 1, MACON, GA 31210
O: 478.750.7507

WWW.THESUMMITGROUPMACON.COM



PROPERTY INFORMATION

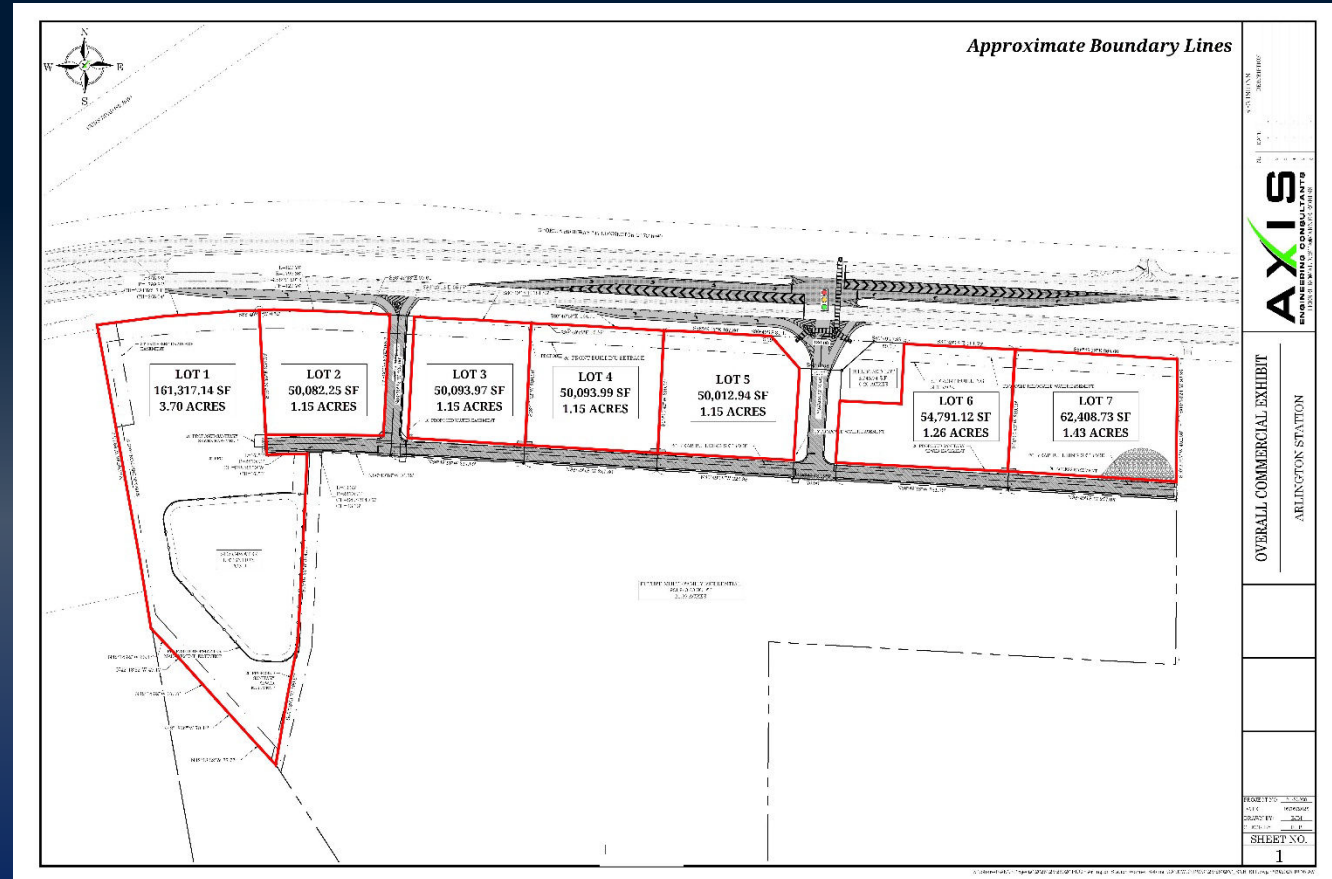
- Seven out-lots ranging from ± 1.15 acres to ± 3.70 acres
- Sites delivered pad-ready with all utilities, retention, and access to the entrance of Arlington Station
- Frontage on Watson Boulevard (Highway 247 Connector)
- Located approximately 0.5 mile east of Interstate 75 (Exit 146), just before the new BJ's Wholesale Club
- Townhome development planned behind subject property
- Curb-cut with traffic signal planned for Arlington Station entrance



WATSON BOULEVARD
BYRON, GA 31008
PEACH COUNTY



PLAT



WATSON BOULEVARD
BYRON, GA 31008
PEACH COUNTY



MAP



The information contained herein has been compiled from various sources, both private and public. It is accurate and complete only to the extent to which The Summit Group has been able to ascertain from third party sources. As such, no warranty or guarantee is given or implied with regard to the accuracy or completeness of any information contained herein. Any interested party shall be required to conduct its own due diligence and investigations to verify, review, audit, or otherwise insure the information contained herein.

