

# RESIDENTIAL DEVELOPMENT SITE

1636 TRIBBLE ROAD  
FORT VALLEY, GA 31030  
CRAWFORD COUNTY

±8.30 ACRES

ASKING PRICE:  
\$85,000

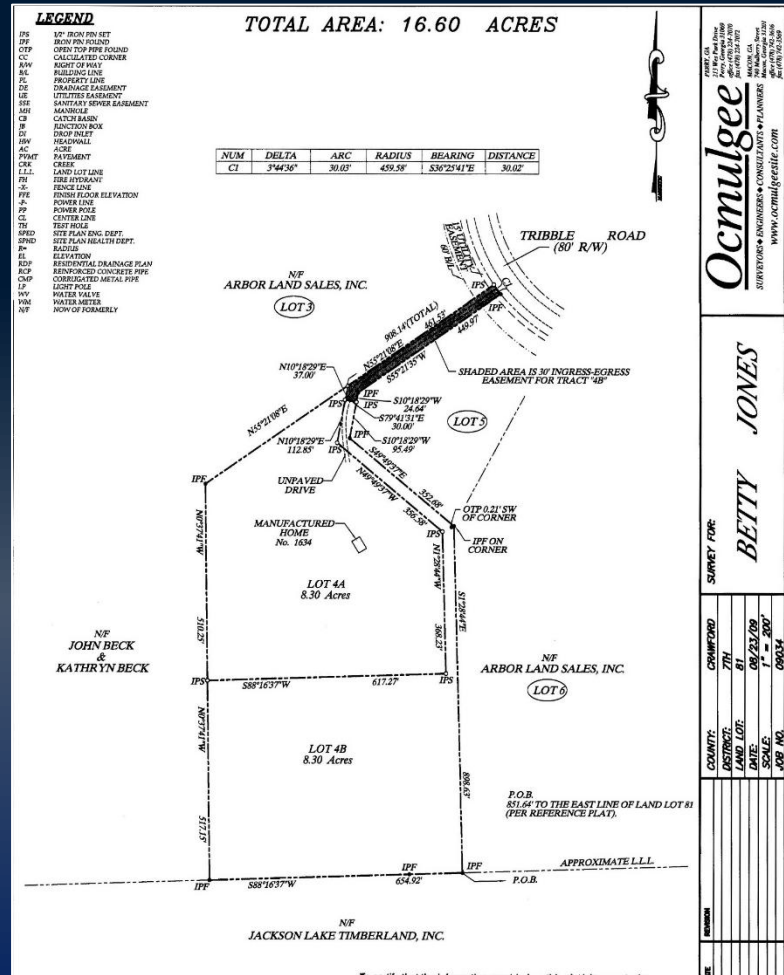


PAYTON HORTON C: 478.733.7132  
[PHORTON@THESUMMITGROUPMACON.COM](mailto:PHORTON@THESUMMITGROUPMACON.COM)  
1120 BALL STREET, PERRY, GA 31069  
O: 478.313.5213  
[WWW.THESUMMITGROUPMACON.COM](http://WWW.THESUMMITGROUPMACON.COM)



# PROPERTY INFORMATION

- ±8.30 Acres
- Electric available at neighboring properties
- Supports well and septic installation
- Zoned: R-AG (Agricultural-Residential District)
- Shared driveway with 1634 Tribble Road
- Land was inherited and subdivided in 2009
- Single-family residential use, Agricultural operations (farming, livestock, etc.), or recreational use
- Within driving distance of:
  - 30 minutes - Warner Robins
  - 30 Minutes - Perry
  - 22 minutes - Byron



The information contained herein has been compiled from various sources, both private and public. It is accurate and complete only to the extent to which The Summit Group has been able to ascertain from third party sources. As such, no warranty or guarantee is given or implied with regard to the accuracy or completeness of any information contained herein. Any interested party shall be required to conduct its own due diligence and investigations to verify, review, audit, or otherwise insure the information contained herein.

