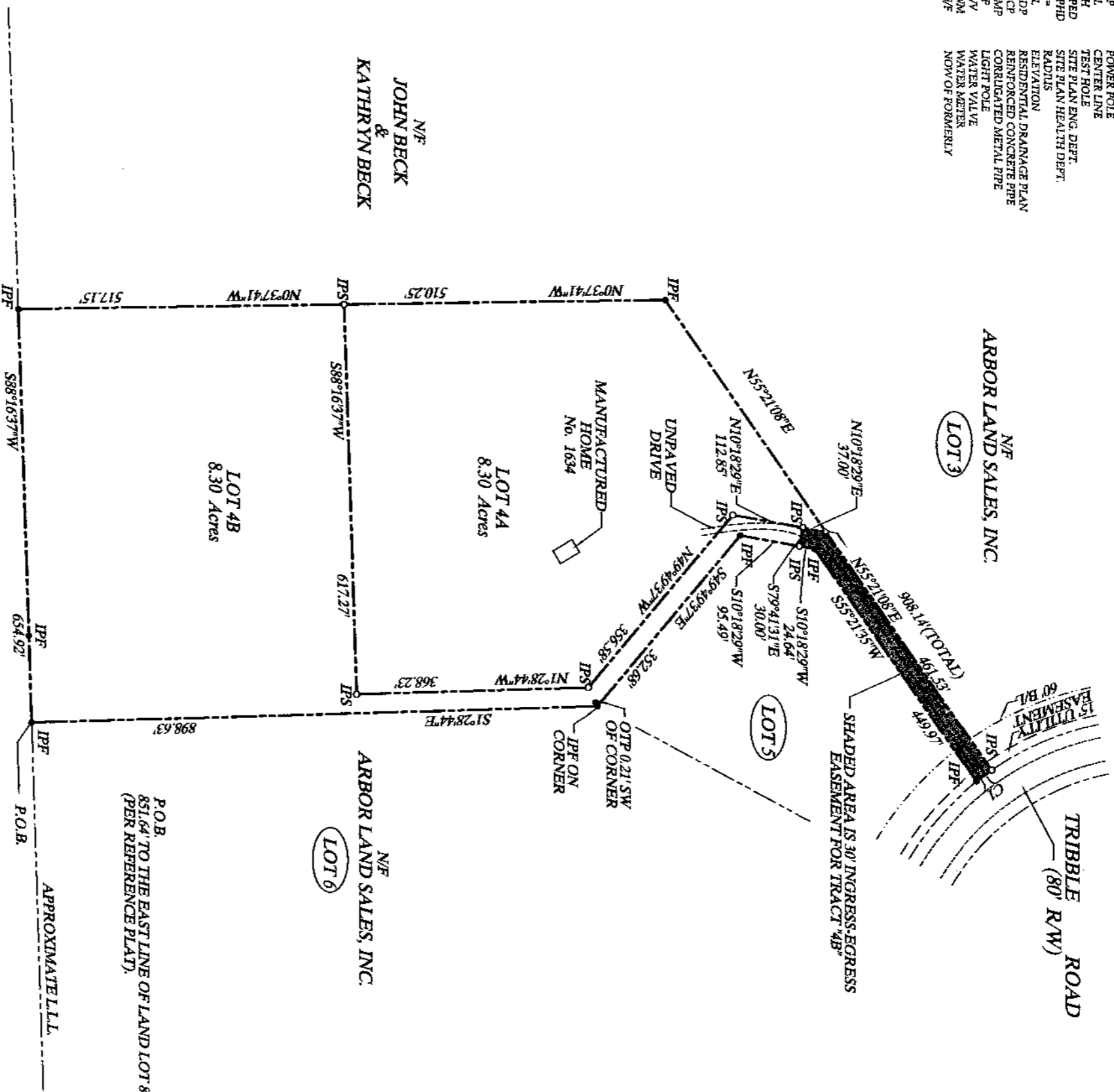


LEGEND

- IP5 1/2" IRON PIN SET
- IP6 IRON PIN FOUND
- OTF OPEN TOP PIPE FOUND
- CC CALCULATED CORNER
- R/W RIGHT OF WAY
- BL BUILDING LINE
- PL PROPERTY LINE
- DE DRAINAGE EASEMENT
- UE UTILITIES EASEMENT
- SSE SANITARY SEWER EASEMENT
- MH MANHOLE
- CB CATCH BASIN
- TB TRUNCTION BOX
- DI DROP INLET
- HW HEADWALL
- AC ACRE
- PV PAVEMENT
- LL L.L. LAND LOT LINE
- HH FIRE HYDRANT
- X- FINISH FLOOR ELEVATION
- P- POWER POLE
- CL CENTER LINE
- TH TEST HOLE
- SPHD SITE PLAN ENG. DEPT.
- R- RADUIS
- EL ELEVATION
- RDP RESIDENTIAL DRAINAGE PLAN
- RCP REINFORCED CONCRETE PIPE
- CMP CORRUGATED METAL PIPE
- LP LIGHT POLE
- LV WATER VALVE
- WM WATER METER
- N/F NOW OF FORMERLY

TOTAL AREA: 16.60 ACRES

NUM	DELTA	ARC	RADIUS	BEARING	DISTANCE
CI	394.36°	30.03'	459.58'	S36°25'41"E	30.02'



NOTES:
THIS PROPERTY IS SUBJECT TO ANY RESTRICTIONS OR EASEMENTS THAT MAY NOT BE SHOWN HEREBY.

THE FIELD DATA UPON WHICH THIS PLAT IS BASED WAS OBTAINED USING A TOPCON GTS 211D AND HAS A LINEAR PRECISION RATIO OF ONE FT. IN 24,680 FEET AND AN ANGULAR ERROR OF 03 SECONDS PER ANGLE AND WAS ADJUSTED USING THE COMPASS RULE. THIS PLAT HAS BEEN CHECKED FOR MATHEMATICAL ACCURACY AND CLOSES WITHIN ONE FT. IN 145,000 FEET. BEARINGS SHOWN ARE CALCULATED FROM ANGLES TURNED BASED ON A SINGLE MAGNETIC OBSERVATION.

"OWNER'S CERTIFICATION"
STATE OF GEORGIA, COUNTY OF CRAWFORD
THE UNDERSIGNED CERTIFIES THAT HE IS THE OWNER OF THE LAND SHOWN ON THIS PLAT AND ACKNOWLEDGES THIS PLAT AND ALLOTMENT TO BE HIS FREE ACT AND DEED AND DEDICATES TO PUBLIC USE FOREVER ALL AREAS SHOWN OR INDICATED ON THIS PLAT AS STREETS, ALLEYS, EASEMENTS OR PARKS.

To certify that the information provided on this plat/plan meets the minimum standards required by the City of Roberta / County of Crawford and the Roberta/Crawford County Planning and Zoning Commission.

14 Feb 09
Zoning Administrator

GEORGIA CRAWFORD COUNTY
Crawford County Superior Court
11/15/09
14 Feb 09
2009
2986

11/15/09
14 Feb 09
2009
2986
Betty Jones

REFERENCES:
LOT 4
ARBOR PLANTATION S/D
P811, P6276

P.O.B.
851.64' TO THE EAST LINE OF LAND LOT 81
(PER REFERENCE PLAT).

NO.	DATE	REASON

SURVEY FOR:
BETTY JONES

Ocmulgee
SURVEYORS • ENGINEERS • CONSULTANTS • PLANNERS
www.ocmulgeesite.com

PERRY, GA
213 Wes Park Drive
Perry, Georgia 31069
office (478) 224-7070
fax (478) 224-7072

MACON, GA
740 Mulberry Street
Macon, Georgia 31201
office (478) 742-3616
fax (478) 742-3569



OWNER'S SIGNATURE _____ DATE _____

