



LAND FOR SALE

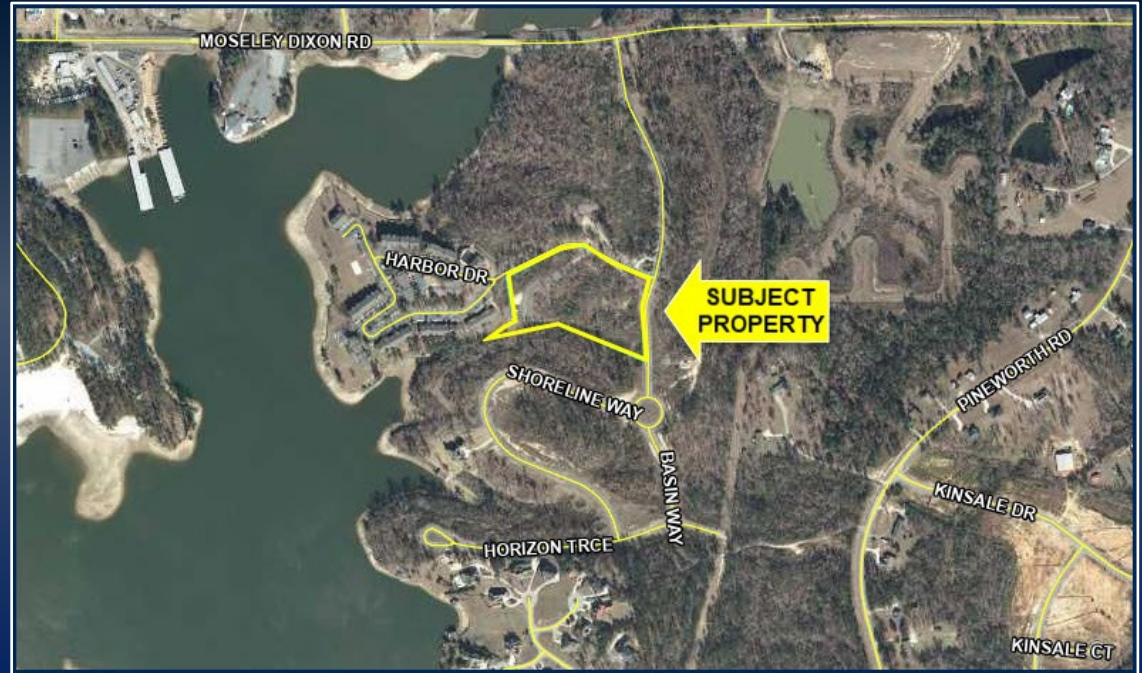
200 GREAT WATERS LANE
LIZELLA, GA 31052
BIBB COUNTY

±5.28 ACRES

PRICE REDUCED:

~~\$99,000~~

\$75,000



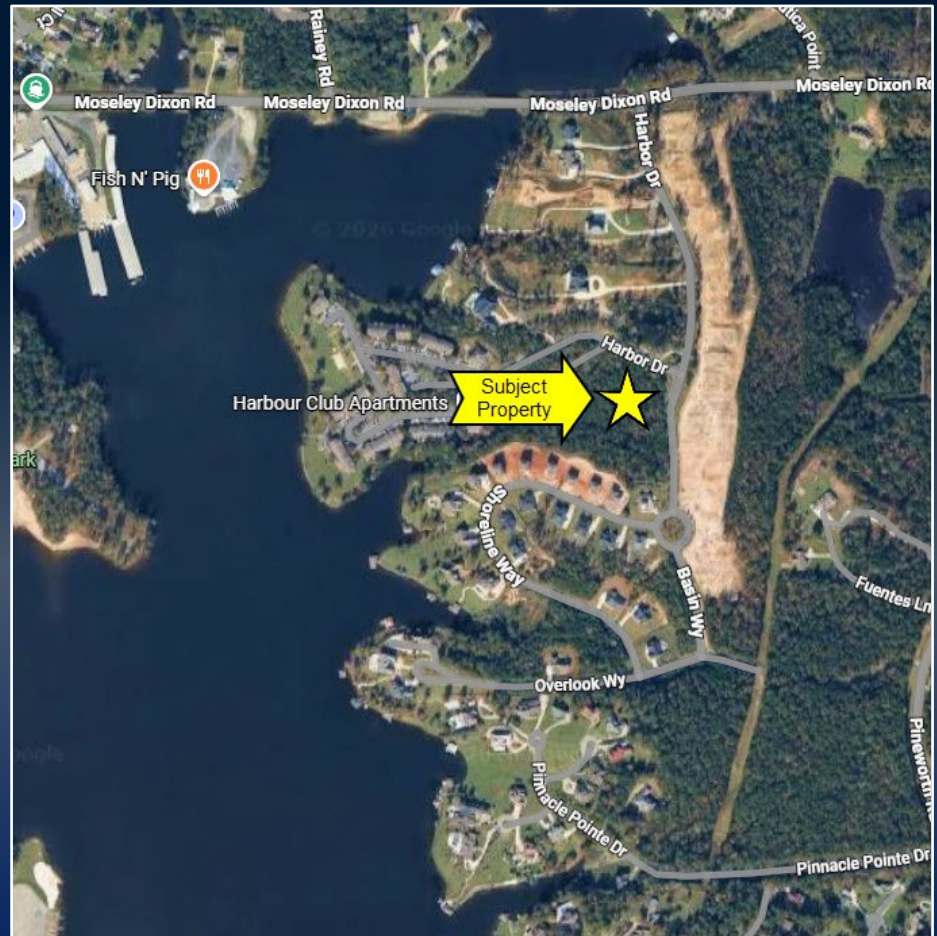
ADAM BAILEY C: 478.733.7961 | STERLING BAILEY C: 478.733.7961
ABAILEY@THESUMMITGROUPMACON.COM | SBAILEY@THESUMMITGROUPMACON.COM
4124 ARKWRIGHT ROAD, SUITE 1, MACON, GA 31210
O: 478.750.7507

WWW.THESUMMITGROUPMACON.COM



PROPERTY INFORMATION

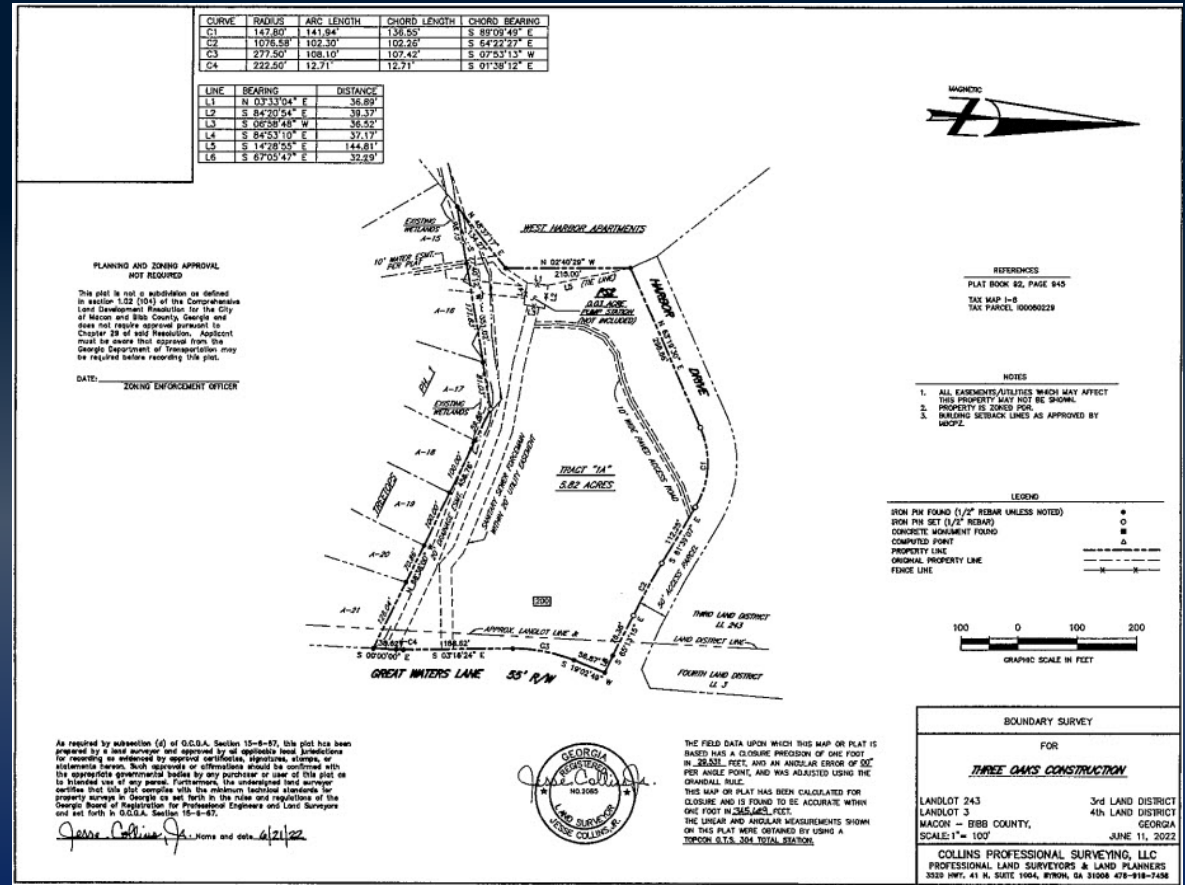
- ±5.28 acres
- Zoned PDE
- Surrounded by recreational amenities
- Positioned near established residential communities
- Convenient access to major local attractions including Lake Tobesofkee
- Located just off Moseley Dixon Road with easy connectivity to Macon, providing excellent accessibility and visibility



200 GREAT WATERS LANE
LIZELLA, GA 31052
BIBB COUNTY



PROPERTY SURVEY



The information contained herein has been compiled from various sources, both private and public. It is accurate and complete only to the extent to which The Summit Group has been able to ascertain from third party sources. As such, no warranty or guarantee is given or implied with regard to the accuracy or completeness of any information contained herein. Any interested party shall be required to conduct its own due diligence and investigations to verify, review, audit, or otherwise insure the information contained herein.

