

# WAREHOUSE SPACE FOR LEASE

167 STEEL ROAD  
CORDELE, GA 31015  
CRISP COUNTY

±14,000 SF  
±30 ACRES

LEASE RATE:  
\$3,500/MO



BO ELLIOTT C: 478.718.2049  
BELLIOTT@THESUMMITGROUPMACON.COM  
4124 ARKWRIGHT ROAD, SUITE 1, MACON, GA 31210  
O: 478.750.7507  
WWW.THESUMMITGROUPMACON.COM



## PROPERTY INFORMATION

- ±14,000 SF industrial warehouse situated on ±30 acres
- Featuring one (1) small office, two (2) restrooms, one (1) 10-ton bridge crane, one (1) dock high door, and two (2) drive-in doors
- Industrial zoning supports a variety of commercial and industrial users
- All utilities available to site
- Ample acreage for truck circulation and logistics activities
- Conveniently located just  $\frac{3}{4}$  mile from I-75 Exit 104 for excellent regional access
- Located within an established industrial area surrounded by warehousing, transportation, agricultural, and manufacturing users

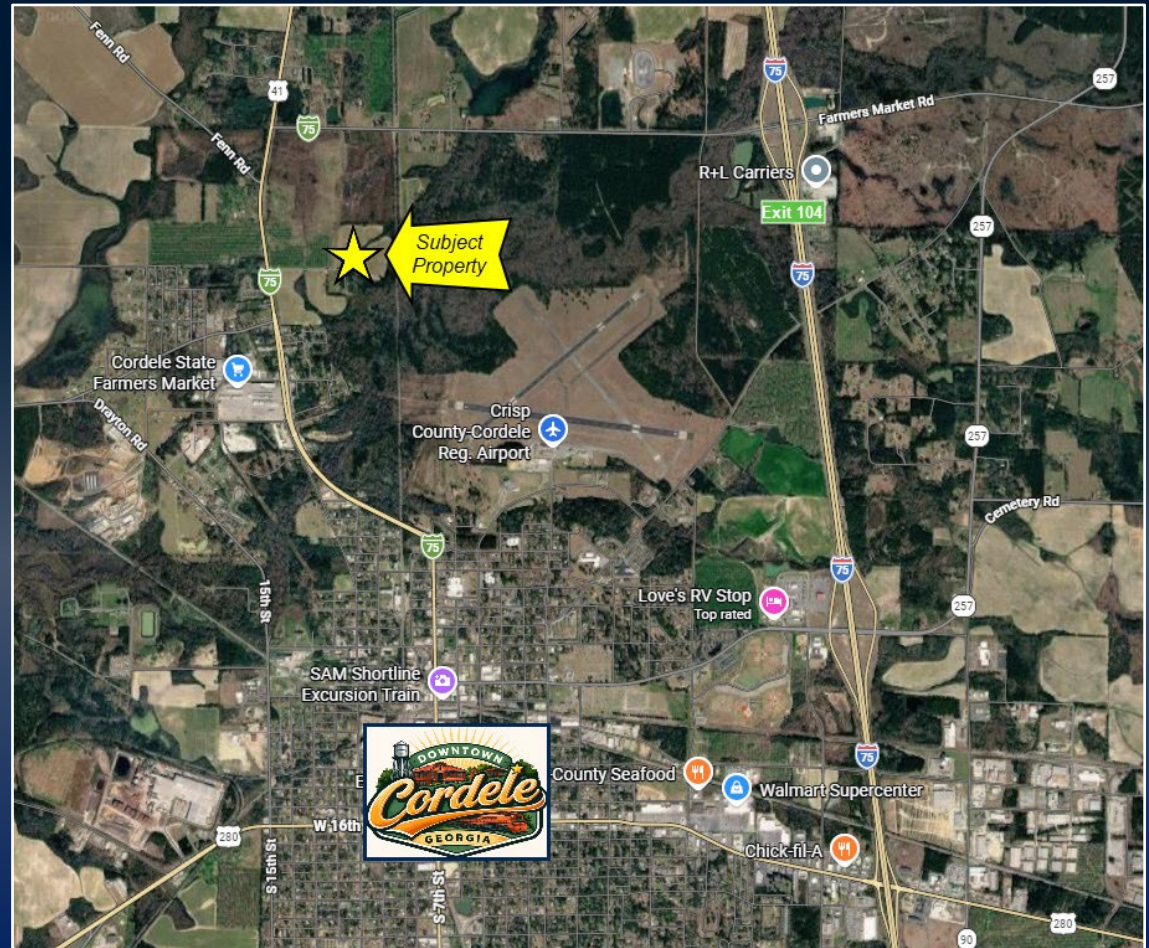


167 STEEL ROAD  
CORDELE, GA 31015  
CRISP COUNTY



## AERIAL MAP & TRAFFIC COUNTS

Traffic Counts (GDOT 2024 Estimates)  
Interstate 75 - 56,900 VPD  
Highway 41 - 4,880 VPD



*The information contained herein has been compiled from various sources, both private and public. It is accurate and complete only to the extent to which The Summit Group has been able to ascertain from third party sources. As such, no warranty or guarantee is given or implied with regard to the accuracy or completeness of any information contained herein. Any interested party shall be required to conduct its own due diligence and investigations to verify, review, audit, or otherwise insure the information contained herein.*

